

M6 Stage 1

Geotechnical investigations at Pitt Street, Lord Street and Farr Street, Rockdale from Tuesday 21 September 2021

About the M6 Stage 1

The M6 Stage 1 will connect President Avenue at Kogarah to the M8 at Arncliffe via a four kilometre tunnel, linking southern Sydney to the wider motorway network.

Latest update

Between Tuesday 21 September and Friday 22 October, we will carry out geotechnical investigations at Pitt Street, Lord Street and Farr Street, Rockdale to inform the final design of the M6 Stage 1 tunnel.

What does our work involve?

Our work involves drilling deep into the ground to take soil and rock core samples to learn about ground conditions under the surface.

Our work will include:

- locating underground utility services using a ground penetrating radar (GPR) and digging below the road surface
- erecting temporary fencing around the work area
- transporting the drill rig to the work area using a light vehicle
- drilling small diameter holes into the ground to extract soil and rock samples.

We will use a drill rig, light vehicles, a vacuum sucker truck and hand tools to complete the work.

A map of our work area is shown over the page.

Our work schedule

Our work will take up to four weeks to complete, weather permitting. We will be at each location for around 11 days. Once the work is completed in your street, we will move to another location in Rockdale.

Our work hours are:

- **7am to 6pm, Monday to Friday**
- **8am to 1pm, Saturday**

The dates and timing of work are subject to change depending on the weather, site conditions and availability of spaces.

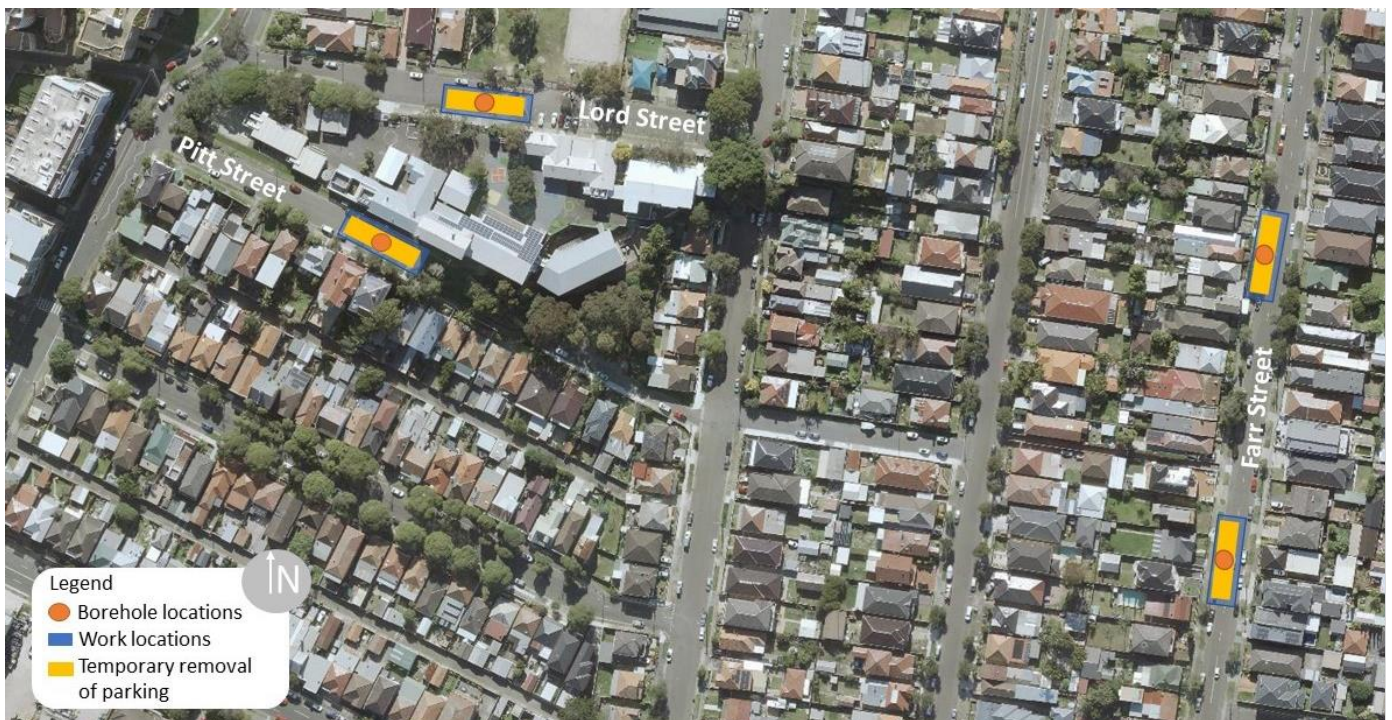
It will take approximately eight months to complete the geotechnical investigations across this project so once we finish in your street, you may also see us in another area.

How will our work affect you?

To prepare for this work and ensure the safety of the community we will need to occupy around five on-street parking spaces at each drilling location.

The project team will start occupying parking spaces by installing traffic cones as marked on the map a few days before the drill rig is due to arrive. Please follow our traffic signs and the directions of our traffic controllers.

Our work will create some noise. We will help to reduce noise by turning off our machinery when not in use and by using noise insulation on our temporary fencing. We will also ensure compliance with strict environmental conditions relating to noise, vibration and dust management.



Pedestrian routes and access to properties will be maintained at all times.

We understand some activities may cause disruption to the local community and businesses and we aim to complete this work as quickly as possible. We thank you for your patience as we undertake this important work.

How are we keeping our sites safe?

The safety and wellbeing of the wider community and our workers is our highest priority. We are working closely with our contractors to make sure COVID safe plans are in place including wearing masks and following appropriate hygiene and social distancing measures.

How will we continue to communicate with you?

We will continue to inform the community in advance about work activities via community notifications delivered to your letterbox. If at short notice NSW Government Health Orders change the timing of our work, we will provide updates on the M6 Stage 1 interactive portal.

More information?

If you would like more information about this project or wish to subscribe to our email distribution list please visit the M6 Stage 1 interactive portal.

Contact us

If you have any questions or would like more on the M6 Stage 1 please contact our project team:

 1800 789 297

 info@M6Stage1.com.au

 nswroads.work/M6portal

 PO Box 7261
Alexandria NSW 2015



If you need help understanding this information, please contact the Translating and Interpreting Service on 131 450 and ask them to call us on 1800 789 297.