

Updated: Monthly update – M6 Stage 1 Surface Works Finishing Scope

M6 Stage 1

February 2026



Transport for NSW acknowledges the Bidjigal, Dharawal, Gweagal and Gadigal clans of the Eora Nation as the Traditional Custodians of the lands on which we work and pays respect to Elders past and present.

With major work for the M6 Stage 1 project now complete, we will be completing minor finishing works in early 2026.

When and where we'll be working

Our standard work hours are from **7am to 6pm, Monday to Friday and 8am to 6pm, Saturday**. We are approved to work out-of-hours from **6pm to 7am**, for up to three weeknights per week, no more than two consecutive weeknights and a maximum of 10 nights per month.

Updated out-of-hours work is scheduled to take place between **Monday 2 and Saturday 28 February 2026**, on the following nights:

Zone East

- 4, 5, 11, 12, 18, 19, 25 and 26 February

Zone A East

- 4, 5, 11, 12, 18, 19, 25 and 26 February

Zone A West

- 2, 3, 5, 9, 10, 16, 17, 23 and 24 February

Zone B

- 2, 3, 5, 9, 10, 16, 17, 23 and 24 February

Zone C

- 4, 5, 9, 11, 12, 18, 19, 25 and 26 February

West Botany Street and Bicentennial Park

- 2, 3, 5, 9, 10, 16, 17, 23 and 24 February

Shared path: Bruce St to Bestic St

- 4, 5, 11, 12, 18, 19, 25 and 26 February

Shared path: Kings Rd to Bruce St

- 2, 3, 9, 10, 16, 17, 23 and 24 February

Shared path: Chuter Ave to Civic Ave

- 9, 16, 19, 20, 23, 26 and 27 February

Please refer to map overleaf for location details.

If work is delayed due to weather or site conditions, it will be carried out on the next available night shift.

What work are we doing?

- Tunnel maintenance.
- Minor panel, handrail, lighting, and painting work on the pedestrian bridge over President Avenue.
- Footpath finishing works on President Avenue.
- Rectification work on Princes Highway, President Avenue, West Botany Street, and between Bestic Street and Chuter Avenue.
- Installation and activation of street lighting at Bestic Street, Civic Avenue, and Chuter Avenue.

Removal of temporary construction measures, including fencing, hoarding, barriers, construction signage, and temporary lighting. Due to road authority restrictions, the following activities will be undertaken outside of standard working hours:

- Installation of permanent signage in Zones B and C on President Avenue and Princes Highway.
- Footpath finishing works on President Avenue.
- Asphaltting and road island removal works at Florence Street.

What will this mean for you?

Some bus stop locations will be temporarily unavailable. Please follow signage for alternative bus stop locations and allow extra time.

Road and lane closures around the work zone, temporary parking removal and pedestrian



diversions may be in place to facilitate works. Please follow our traffic signs and the directions of traffic control. Traffic management will be in place to ensure the safety of workers and the community when working on or near live traffic.

Temporary changes to traffic may occur near our site gates on President Avenue.

The works may generate dust and moderate noise levels. We will manage dust by using a water cart

and manage noise by using squawkers instead of beepers on vehicles. We'll turn off equipment and vehicles when they are not being used. We use noise and dust monitoring to measure our impact to the local community.

Respite for one hour will occur every three hours during high impact activities. High impact work on Saturday will finish by 1pm.



Shared pedestrian and cycle path entrance to the north of President Avenue



Shared pedestrian and cycle path at Scarborough Park



Shared pedestrian and cycle path alongside Brighton Terraces

Contact us



Project Infoline and
24-hour Construction Response Line
1800 789 297



info@M6Stage1.com.au



PO Box 7261
Alexandria, NSW 2015



**Visit the online portal go to
nswroads.work/M6portal**



Interpreter service

For languages other than English call 131 450
Arabic • Greek • Hindi • Mandarin • Vietnamese

لطلب خدمة الترجمة الشفهية للغات غير الإنجليزية اتصل
بالرقم **131 450**

Για υπηρεσίες διερμηνείας σε άλλες γλώσσες εκτός από
τα Αγγλικά καλέστε το **131 450**

अंग्रेज़ी के अतिरिक्त अन्य भाषाओं के लिए दुभाषिया सेवा
131 450 पर कॉल करें

获取英语以外的其他语言口译协助服务可以致电**131 450**

Để có dịch vụ thông ngôn cho các ngôn ngữ khác tiếng
Anh, gọi số **131 450**



Subscribe to updates at info@M6Stage1.com.au

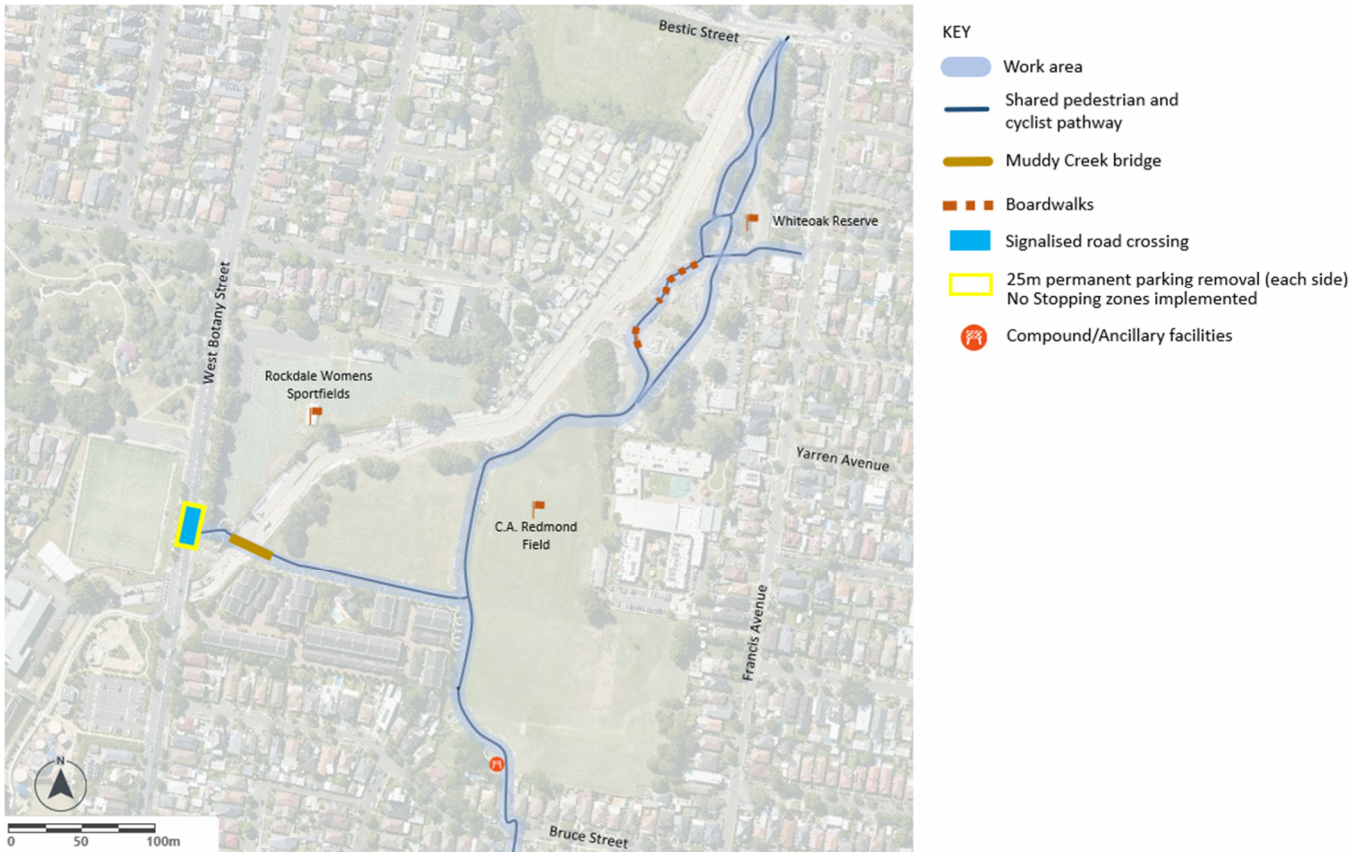
www.transport.nsw.gov.au/privacy-statement#Your_Privacy

Work areas

President Avenue, Princes Highway and West Botany Street



Shared Pedestrian and Cyclist Pathway: Bruce Street to Bestic Street



Shared Pedestrian and Cyclist Pathway: Kings Road to Bruce Street



Shared Pedestrian and Cyclist Pathway: Chuter Avenue to Civic Avenue

