

Updated: Monthly update – M6 Stage 1 Surface Works Finishing Scope

M6 Stage 1

January 2026



Transport for NSW acknowledges the Bidjigal, Dharawal, Gweagal and Gadigal clans of the Eora Nation as the Traditional Custodians of the lands on which we work and pays respect to Elders past and present.

With major work for the M6 Stage 1 project now complete, in early 2026 we will be completing minor finishing work.

When and where we'll be working

Our standard work hours are from **7am to 6pm, Monday to Friday and 8am to 6pm, Saturday**. We are approved to work out-of-hours from **6pm to 7am**, for up to three weeknights per week, no more than two consecutive weeknights and a maximum of 10 nights per month.

Updated out-of-hours work is scheduled to take place between **Monday 5 and Wednesday 31 January 2026**, on the following nights:

Zone East

- 7, 8, 14, 15, 21, 22, 28 and 29 January

Zone A East

- 7, 8, 14, 15, 21, 22, 28 and 29 January

Zone A West

- 5, 6, 8, 12, 13, 19, 20, 26 and 27 January

Zone B

- 5, 6, 8, 12, 13, 19, 20, 26 and 27 January

Zone C

- 5, 6, 12, 13, 19, 20, 26 and 27 January

West Botany Street and Bicentennial Park

- 5, 6, 12, 13, 19, 20, 26 and 27 January

ATC: Bruce St to Bestic St

- 7, 8, 14, 15, 21, 22, 28 and 29 January

ATC: Kings Rd to Bruce St

- 5, 6, 12, 13, 19, 20, 26 and 27 January

ATC: Chuter Ave to Civic Ave

- 5, 6, 12, 13, 19, 20, 26 and 27 January

If work is delayed due to weather or site conditions, it will be carried out on the next available night shift.

What work are we doing?

- Tunnel maintenance.
- Minor panel, handrail, lighting, and painting work on the pedestrian bridge over President Avenue.
- Rectification work at Princes Highway, President Avenue, and West Botany Street, and between Bestic Street and Chuter Avenue.
- Removal of temporary construction measures, including fencing, hoarding, barriers, construction signage, and temporary lighting.

Due to road authority restrictions, the following activities will be undertaken outside of standard working hours:

- Installation of permanent signage in Zone B on President Avenue.
- Slab replacement work in Zone C at the Princes Highway and President Avenue intersection.
- Installation and activation of street lighting at Bestic Street, Civic Avenue, and Chuter Avenue.

What will this mean for you?

Some bus stop locations will be temporarily unavailable. Please follow signage for alternative bus stop locations and allow extra time.



Road and lane closures around the work zone, temporary parking removal and pedestrian diversions may be in place to facilitate works. Please follow our traffic signs and the directions of traffic control. Traffic management will be in place to ensure the safety of workers and the community when working on or near live traffic. Temporary changes to traffic may occur near our site gates on President Avenue.



Shared pedestrian and cycle path entrance to the north of President Avenue



Shared pedestrian and cycle path alongside Brighton Terraces

The works may generate dust and moderate noise levels. We will manage dust by using a water cart and manage noise by using squawkers instead of beepers on vehicles. We'll turn off equipment and vehicles when they are not being used. We use noise and dust monitoring to measure our impact to the local community.

Respite for one hour will occur every three hours during high impact activities. High impact work on Saturday will finish by 1pm.



Shared pedestrian and cycle path at Scarborough Park

Contact us



Project Infoline and
24-hour Construction Response Line
1800 789 297



info@M6Stage1.com.au



PO Box 7261
Alexandria, NSW 2015



Visit the online portal go to
nswroads.work/M6portal



Interpreter service

For languages other than English call 131 450
Arabic • Greek • Hindi • Mandarin • Vietnamese

لطلب خدمة الترجمة الشفهية للغات غير الإنجليزية اتصل
بالرقم **131 450**

Για υπηρεσίες διερμηνείας σε άλλες γλώσσες εκτός από
τα Αγγλικά καλέστε το **131 450**

अंग्रेजी के अतिरिक्त अन्य भाषाओं के लिए दुभाषिया सेवा
131 450 पर कॉल करें

获取英语以外的其他语言口译协助服务可以致电**131 450**

Để có dịch vụ thông ngôn cho các ngôn ngữ khác tiếng
Anh, gọi số **131 450**



Subscribe to updates at info@M6Stage1.com.au

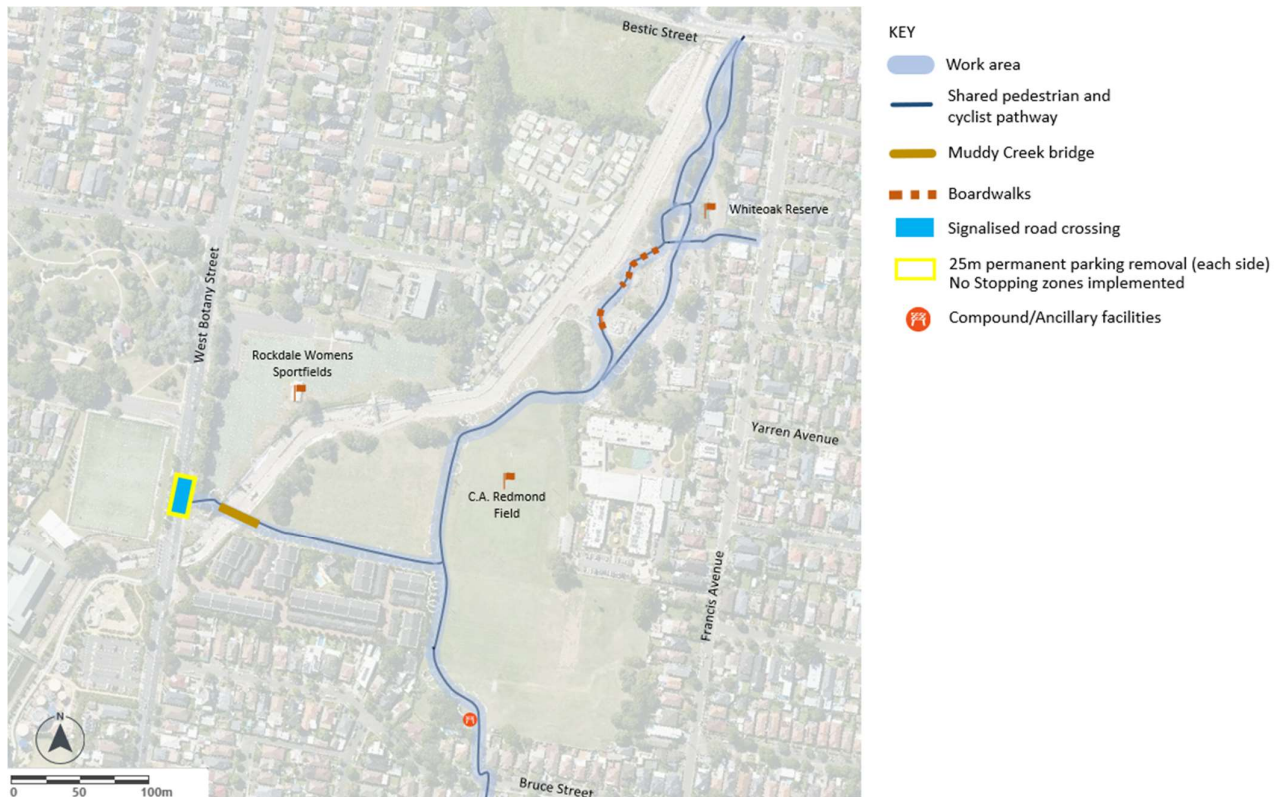
www.transport.nsw.gov.au/privacy-statement#Your_Privacy

Work areas

President Avenue, Princes Highway and West Botany Street



ATC: Bruce Street to Bestic Street



ATC: Kings Road to Bruce Street



ATC: Chuter Avenue to Civic Avenue

