



The M7-M12 Integration project will support future development growth in Western Sydney by improving travel times and congestion. Once complete, the project will provide direct access to commercial and residential hubs, and the new Western Sydney International Airport.

From construction milestones and sustainability achievements to inspiring Aboriginal artworks and local wildlife initiatives, we're excited to share our progress with you.

Project Update

It has been an action-packed few months across all sites. Construction activities have included:

- concrete pours across all 41 bridges – a major milestone
- bridge girder installation at the Elizabeth Drive Connection (EDC)
- permanent bearing installation on incrementally launched bridges along the M7-M12 Interchange
- retaining wall construction along the EDC and M7-M12 Interchange
- construction of the future permanent M7 Motorway northbound on-ramp and service road at Wallgrove Road
- basin upgrade works at various locations along the M7 Motorway shared user path and on and off ramps
- M7 Motorway road resurfacing and pavement works.

M7-M12 Interchange bridge update

Progress on the future eastbound M12 connection to the northbound M7 Motorway at Cecil Park is tracking well. Following the successful installation of all 12 Super T girders in July, the team has now completed all deck pours for both spans of the bridge — marking another key milestone!



DID YOU KNOW?

When building a bridge, a 'deck pour' is the process of creating the surface you drive on. It involves pouring wet concrete over a steel framework to form the flat top of the bridge. Once poured, the concrete is smoothed and left to harden — a key step in making the bridge safe and ready for use!



Incrementally launched bridges update

When constructing the two incrementally launched bridges, each section of prestressed concrete was progressively pushed out from a launch bed using hydraulic jacks. During this process, temporary bearings were installed to allow the bridge segments to slide smoothly along the piers. Once the bridge was fully in place, these temporary bearings were replaced with permanent bearings, which are specifically designed to support the bridge's long-term structural loads and accommodate movement due to temperature changes, traffic, and other dynamic forces.

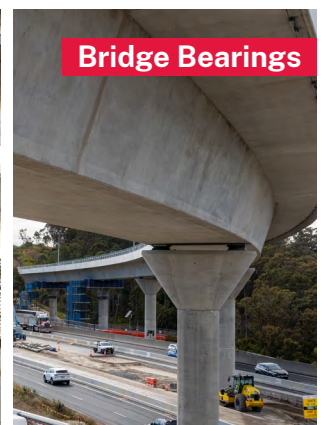
We've completed all permanent bearing works on our incrementally launched bridges. Overall, this process has been a huge success in the challenging conditions. By utilising this method, we have been able to build the bridges over live traffic without disrupting road users!



Bridge Bearing Replacement in a Nutshell!

1. Metal plates are installed during construction for future alignment.
2. The bridge is moved and positioned into its final spot.
3. Temporary supports are swapped out for permanent ones.
4. Jackhammers and lifting equipment remove heavy temporary bearings.
5. Permanent bearings are installed to allow for temperature-related movement.
6. Connection points are matched to the bridge's current position, which shifts with temperature.
7. Locking points are shifted for long-term stability.
8. The bridge is lowered onto its new bearings.

This process is repeated for each of the 50 bearings across both ILB bridges.



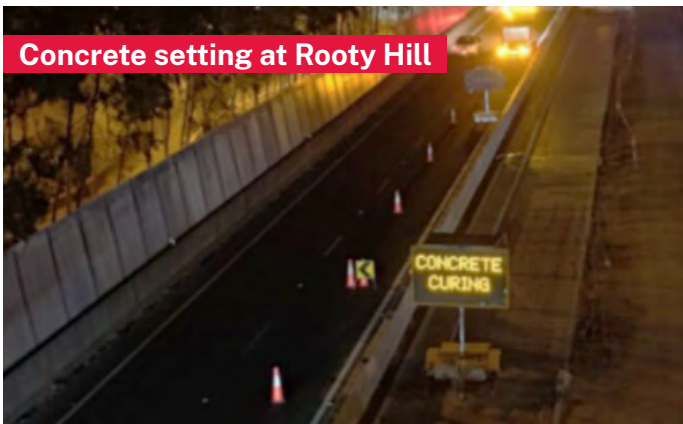
Concrete pour at Rooty Hill



Final concrete pour at Rooty Hill



Concrete setting at Rooty Hill



Resurfacing: smoother journeys ahead!

We started night-time resurfacing works in late September to make the road safer and more efficient. This is the final stage of adding the new third lane and improving the existing lanes. Once complete, the upgraded road will provide smoother drives and safer journeys for everyone.

To minimise disruption during resurfacing works, our engineering and traffic teams have designed a smart construction methodology and traffic management plan. The existing crossovers along the M7 Motorway were utilised as traffic switch points, to temporarily redirect traffic to the opposite carriageway. This approach keeps vehicles moving while works can be safely completed.

M7 Motorway widening

The M7 widening has hit a high point! Over the past 12 months we have been completing concrete pours at 41 bridges across 22 locations along the motorway. This is a significant milestone for the M7-M12 Integration project as all concrete pour works have now been completed.



Fun Asphalt Facts



Ancient Engineering

Asphalt roads date back to Babylon, 625 BCE!



Recycling Champions

Asphalt is one of the most recycled materials in Australia, helping reduce waste and emissions.



Hot Work

Fresh asphalt can reach up to 160°C — no wonder our crews wear special gear!



Fuel Saver

Smooth roads mean less fuel use and fewer emissions for drivers.



Local Legacy

Sydney's first bitumen road was laid in the early 1900s, laying the foundation for modern Aussie roads.

M7-M12 Integration project 80% complete

The Linkt app lets you know about traffic disruptions or delays on the roads you use, so you know when to go. Download the Linkt app and switch on Road Alerts for M7 roadworks.

Get traffic updates on the go from our Linkt app



- M7-M12 Integration Project
- M7 widening
 - No M7 widening activities
 - M7-M12 Interchange
 - Elizabeth Drive Connection (EDC)
 - M12 Motorway
 - Bridges to be widened
 - New bridges



Westbound incrementally launched bridge

Concrete pour to join the new bridge deck to the existing bridge deck



Future connection to the M12 Motorway



Barrier installation at the Elizabeth Drive Connection



Road resurfacing on M7 Motorway



Sustainability

45% of our water is from recycled sources



21% of our asphalt contains recycled materials



81% of our electricity is from renewable sources



Earthwork

98% of earthwork completed

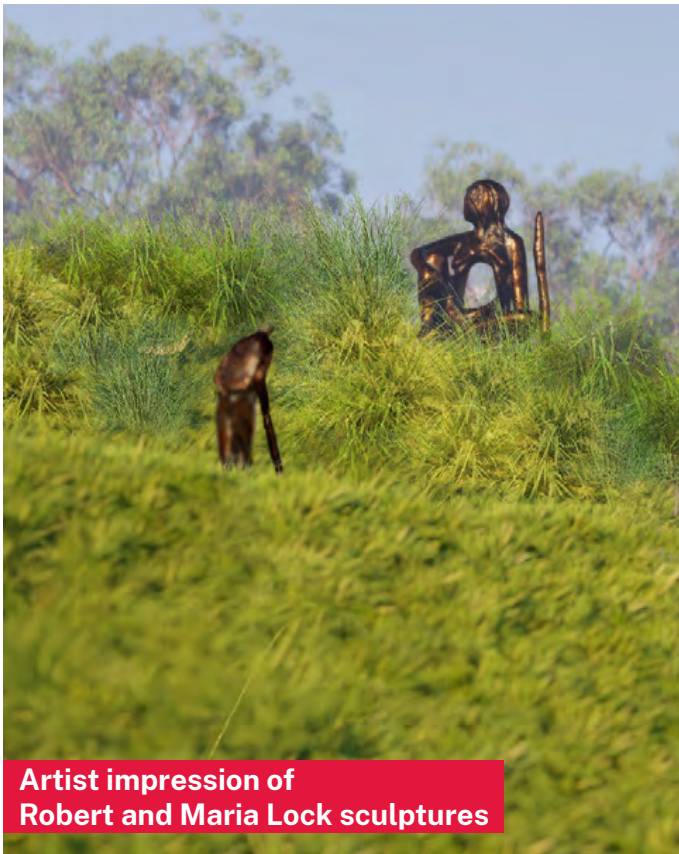


Bridges

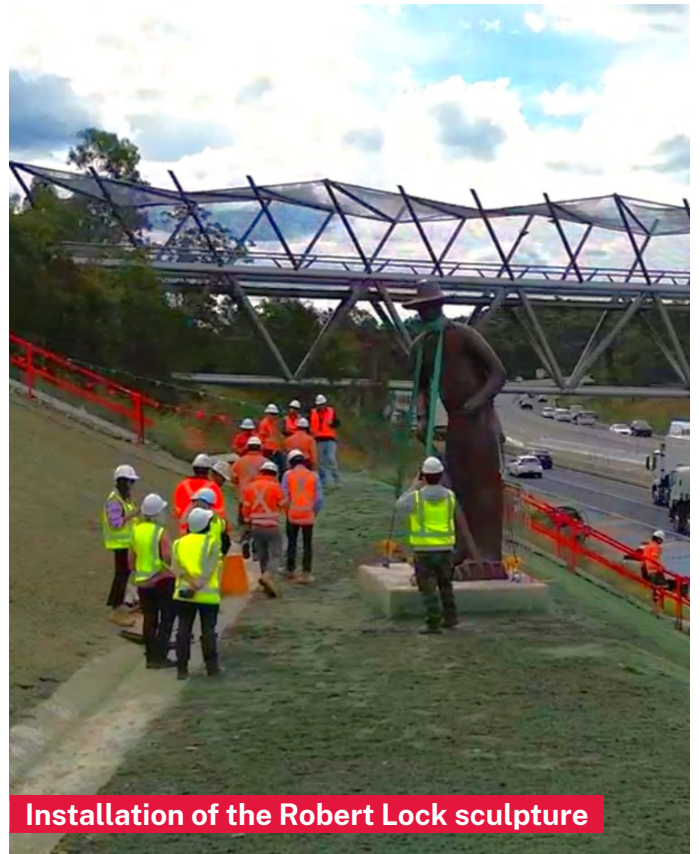
41/41 bridge concrete pours completed

473/473 bridge girders installed





Artist impression of Robert and Maria Lock sculptures



Installation of the Robert Lock sculpture

Aboriginal artworks – celebrating culture and community

The final stages of design and landscaping are underway, with stunning Aboriginal artworks being installed along the project alignment.

Our talented artists have designed several art installations including sculptures, spears, shields, warriors, light beams, a poem, horses, feathers, and place and language signs, creating a vibrant and meaningful cultural presence.

You may have noticed a striking new addition to the M7 Motorway! The Robert Lock sculpture has been successfully installed at the new Heavy Vehicle Bay on the M7 northbound, just after Cowpasture Road. The Maria Lock sculpture will be installed in mid-November. Once the artwork has been fully installed it will represent her marriage to convict Robert Lock. Their nine surviving children mark a lineage from which many Dharug people have descended. Maria led a barrierbreaking life of achievement in education and pursuing rights and land.

Jasmine Seymour is the artist who has designed the Maria and Robert Lock sculptures. Jasmine is an indigenous Dharug woman and a descendant of Maria Lock. Alongside designing these impressive cast bronze sculptures, Jasmine is an accomplished author and teacher with a passion for learning and revitalising her language. Robert Lock stands at 4 metres tall and weighs approximately 900 kg. Once Maria Lock is fabricated, the sculpture will reach 4.5 metres and weigh approximately 4000 kg. These artworks will honour local heritage and enrich the community landscape.



Jasmine Seymour, artist who designed Robert Lock and Maria Lock sculptures

All the same info.

One convenient location.

M7 - M12 Integration
Learn about the project

What's happening

Stay ahead of the build and sign up for digital updates.

Wildlife habitat initiatives: Supporting local biodiversity

To help local wildlife thrive, the project has installed nest boxes – artificial tree hollows designed to provide essential shelter for native Australian wildlife. These boxes are tailored to meet the specific needs of local species and are built for long-term durability. Species that may benefit from these nest boxes include:

- Southern Boobook
- Sulphur-crested Cockatoo and Little Corella
- Red-rumped Parrot, Eastern Rosella, and Rainbow Lorikeet
- Brushtail Possum
- Sugar Glider
- Microbats

An additional 60 bored tree hollows of various sizes – from 5cm to over 30cm – have been installed along Elizabeth Drive in Abbotsbury. These hollows provide essential shelter and supporting habitat restoration for birds and mammals.



End of year shutdown

The Project will shutdown over the Christmas period from **Monday 22 December** until **Monday 5 January 2026**.

During this time, no construction activities will take place across the project alignment. However, security personnel will remain on site to monitor and maintain safety.

Q&A with Wilson Yin

What is your role at John Holland?

I'm a Graduate Engineer on the M7-M12 Integration project, part of the Traffic team. My main job is developing strategies to manage traffic and ensure both our workers and the public are safe.

What is the best thing about your job?

As part of a support team, I get to have a wider view of the project - I know what's going to happen, where and when it's going to happen, especially as it affects the road network – which is pretty much everything!

What is the hardest part of your job?

Keeping traffic moving and dealing with the construction challenges faced by our site teams can be tricky!! Working together safely is always the best solution.



Contact us



24-hour Project Infoline **1800 712 712**



info@m7m12integrationproject.com.au



www.m7m12integrationproject.com.au



PO Box 98,
Kemps Creek NSW 2178

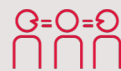


**Alternatively, scan the
QR code to stay updated**



For the latest traffic updates:

Call 132 701, visit livetraffic.com
or download the app Live Traffic NSW



Interpreter service

For languages other than English call **131 450**
Arabic • Greek • Hindi • Mandarin • Vietnamese

لطلب خدمة الترجمة الشفهية للغات غير الإنجليزية اتصل
بالرقم **131 450**

Για υπηρεσίες διερμηνείας σε άλλες γλώσσες εκτός από
τα Αγγλικά καλέστε το **131 450**

अंग्रेज़ी के अतिरिक्त अन्य भाषाओं के लिए दुभाषिया सेवा
131 450 पर कॉल करें

获取英语以外的其他语言口译协助服务可以致电**131 450**

Để có dịch vụ thông ngôn cho các ngôn ngữ khác tiếng
Anh, gọi số **131 450**

www.transport.nsw.gov.au/privacy-statement#Your_Privacy