

Construction notification

April 2026

Out-of-hours deliveries

Construction activity is ongoing at the Powerhouse Parramatta project site and work is progressing well. Out-of-hours works are required to facilitate upcoming oversized deliveries to site to support exhibition fit out.

Key dates

Wednesday 29 April 2026

Location

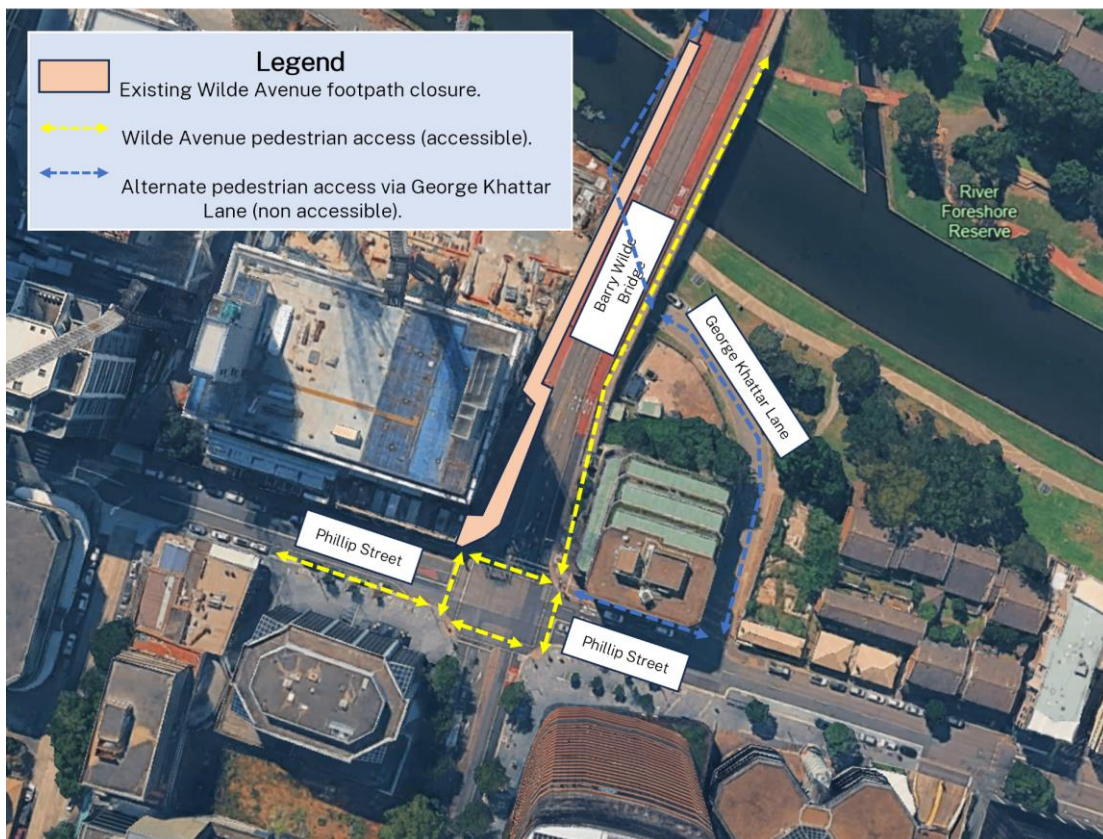
Wilde Avenue, Parramatta

Out-of-hours exhibition deliveries to site

On **Wednesday 29 April 2026 from 12am to 5am (weather and site conditions permitting)**, out-of-hours deliveries to site to support exhibition fit out will take place via oversize vehicles on Wilde Avenue.

Intermittent vehicle lane closures on Wilde Avenue will be required to safely manoeuvre the vehicles into the Powerhouse Parramatta loading zone.

Due to the oversized nature of these loads, the National Heavy Vehicle Regulator (NHVR) requires that movements of this scale occur during approved night-time operating hours. These works have been scheduled accordingly to comply with those requirements.



Truck route and site access

Delivery vehicles will:

1. Travel southbound along Wilde Avenue and across Barry Wilde Bridge.
2. Stop under Traffic Controller instruction near Phillip Street and safely reverse into the construction site loading zone at Wilde Avenue.

Traffic and pedestrian management

Traffic controllers and vehicle escorts will be in place at Wilde Avenue and Phillip Street to manage vehicle movements and maintain safety for road users and pedestrians.

The western footpath of Wilde Avenue adjacent to the construction site is already closed for works to take place. As previously advised, pedestrian diversion signage is in place at key locations including at the intersection of Victoria Road and Wilde Avenue, at the stairs adjacent to Wilde Avenue leading to the Parramatta River foreshore and on Phillip Street. All movements will be carried out in accordance with the approved Traffic Guidance Scheme (TGS).

Construction hours

This out-of-hours delivery will take place on Wednesday 29 April 2026 from 12am to 5am (weather and site conditions permitting).




All other construction activities will be carried out during the approved construction hours:

- Monday to Friday, 7am to 6pm
- Saturday, 8am to 5pm.

More information

We are committed to keeping you informed and regular updates will be provided.

Contact us for construction related questions, feedback or complaints:

 1800 574 931  powerhouse@lendlease.com  insw.com/powerhouseparramatta

Scan the QR code to receive the latest project updates



If you need an interpreter, please call TIS National on 131 450 and ask them to call Infrastructure NSW on 1800 931 109. Our business hours are 8am – 5pm.