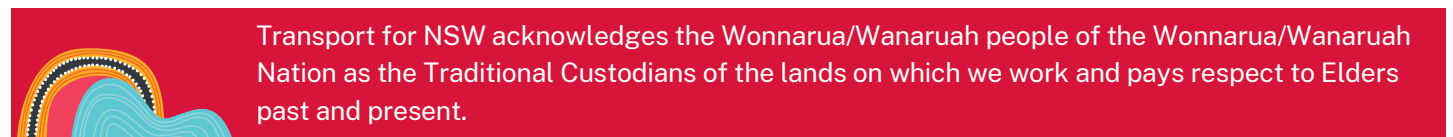


Planned out of hours work from August to September 2025

Singleton Bypass

June 2025



The Australian and NSW Governments have invested a total of \$700 million to build the Singleton Bypass. Major construction work on the bypass started in early September 2024. Work continuing includes bridge construction, earthwork, relocation and cut over of water and sewer utilities, drainage and pavement works.

What out of hours work are we doing?

Over the next three months we will be carrying out some out of hours work at different locations along the project alignment. This will involve earthwork, relocation and cut over of water and sewer utilities, work on existing roads including line marking, asphaltting involving traffic control and placement of temporary roadside barriers and concrete. Delivery and placement of concrete bridge girders and parapets using cranes will also occur.

When and where we'll be working

To maintain safety for road users and workers and to keep traffic moving during peak travel times, work will be carried out outside of standard construction hours from the **beginning of July to the end of September 2025**, between **6pm and 7am on weeknights**, weather permitting. Some work will be carried out on Saturdays and Sundays.

Work will be carried out along the project alignment and on the New England Highway between Range Road, Whittingham to Rixs Creek Lane, Rixs Creek.

We have included maps to show you the work locations.

What will this mean for you?

These activities have been assessed as having a moderate noise impact, with the following equipment used:

- lighting towers and generators
- rollers, excavators, compactors, cranes and vacuum truck
- paving machine, line marker machine, line removal machine, water blaster
- heavy vehicles (including Oversize/Overmass (OSOM) vehicles)
- concrete agitators and pumps
- hand tools
- light vehicles and traffic control

We will minimise noise impact by carrying out work located closer to residential properties earlier in the night and switching off vehicles and equipment when not in use. Noise blankets may be used for activities near residences.

Night work will be carried out in stages along the bypass route to minimise the impact on residents.

During work hours, temporary speed reductions and lane closures will be in place on the New England Highway and adjoining local roads for the safety of workers and motorists.



Oversize/Overmass (OSOM) vehicles will also be making regular deliveries to site.

Please keep to the speed limits and follow the direction of traffic controllers and signs.

Our standard construction hours are between 7am to 6pm and Monday to Friday and 8am to 1pm on Saturday.

Keeping you informed

Directly affected residents will receive a specific notification ahead of work occurring. VMS and Live Traffic updates will also be used to advise motorists of traffic changes.

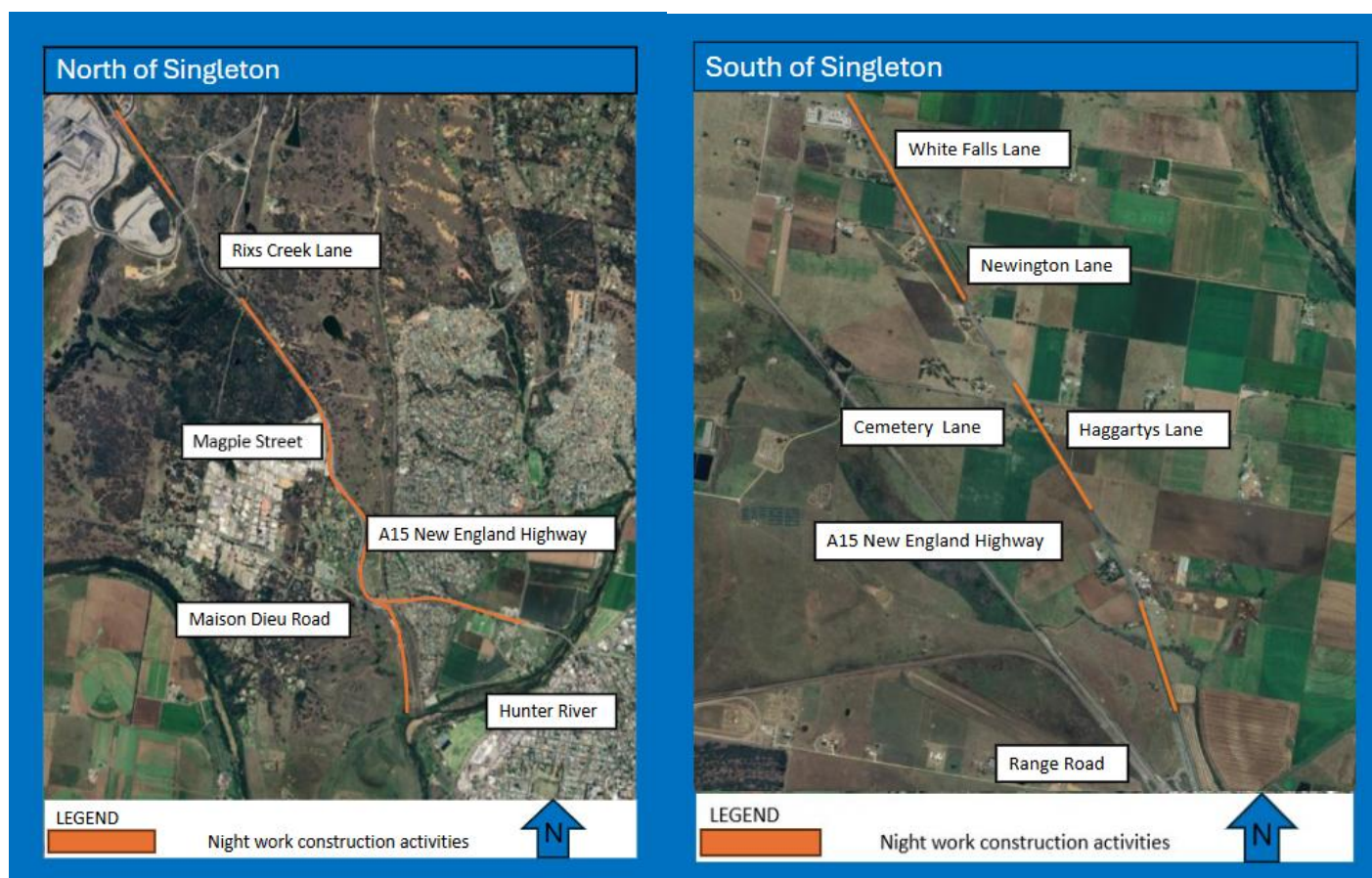
Location of work area

Looking ahead

We will continue to keep the community updated as work on the project progresses. The bypass is expected to open to traffic in late 2026, weather permitting.

Complaints and queries

If you have any complaints or queries, please contact the Project Line on **1800 991 254**.



Oversize/Overmass deliveries



Oversize/Overmass (OSOM) vehicles will be making regular deliveries of concrete girders and parapets along the project alignment. Example

above is a delivery of girder (32m in length) using Putty Road. Motorists are advised to keep to the speed limits and follow the direction of traffic controllers and signs.

Contact us



24-hour Construction Response Line
1800 991 254



SBP-community@acciona.com



nswroads.work/singleton



Singleton Bypass Project
PO Box 408, Singleton NSW 2330



Interpreter service

For languages other than English call **131 450**
Arabic • Greek • Hindi • Mandarin • Vietnamese

لطلب خدمة الترجمة الشفهية للغات غير الإنجليزية اتصل
بالرقم **131 450**

Για υπηρεσίες διερμηνείας σε άλλες γλώσσες εκτός από
τα Αγγλικά καλέστε το **131 450**

अंग्रेज़ी के अतिरिक्त अन्य भाषाओं के लिए दुभाषिया सेवा
131 450 पर कॉल करें

获取英语以外的其他语言口译协助服务可以致电**131 450**

Để có dịch vụ thông ngôn cho các ngôn ngữ khác tiếng
Anh, gọi số **131 450**

www.transport.nsw.gov.au/privacy-statement#Your_Privacy



For the latest traffic updates:

Call 132 701, visit livetraffic.com or
download the app Live Traffic NSW