

# New Alfred Street off ramp opens from August 2025, North Sydney

Warringah Freeway Upgrade  
July 2025



Transport for NSW acknowledges the Cammeraygal people of the Eora nation as the Traditional Custodians of the lands on which we work and pays respect to Elders past and present.

**We are simplifying the Warringah Freeway, making it safer and easier to use, and more efficient and reliable for the benefit of all road users, including public transport users.**

**We are excited to announce that a section of the new Alfred Street southbound off ramp will open from 5am Saturday 2 August 2025, re-connecting access from the Warringah Freeway to North Sydney and Kirribilli.**

In November 2024, we temporarily closed access to the Alfred Street southbound off ramp. We thank you for your patience while we continue work to build the new off ramp overpass structure.

By opening this section of the new off ramp, we are able to provide interim access for the local community while also allowing our team to continue important work in this area to finalise the new off ramp structure and Mount Street underpass. This temporary access arrangement is expected to be in place for around 6 months. The full length of the Alfred Street off ramp will be open to motorists in late 2025/early 2026.

The off ramp will be closed from **10pm Saturday 2 August to 6am Sunday 3 August 2025**. This is a contingency closure to allow for changes to line marking or signage that may be required after traffic is monitored on the first day. If no changes are required, the ramp will not be closed.

There will also continue to be intermittent temporary closures in the future to safely finalise work along the new off ramp structure including lighting and signage.

## New Alfred Street off ramp

The new Alfred Street southbound off ramp will provide dedicated and separated access for general motorists to High Street and the Cahill Expressway from the Warringah Freeway. It passes over the new southbound bus lane and connects the southbound lanes of the

Warringah Freeway to the Cahill Expressway via the new Mount Street underpass and High Street via two lanes on the new overpass. The bridge is three spans, with an overall length of 86.5 metres. Eighteen Super-T girders weighing around 55 tonnes each were installed over the three spans in January 2025.

We know how important this access is for the surrounding community, residents, and businesses and are working to open the off ramp in its final configuration as soon as possible.

A map of the new traffic arrangements in place from **5am Saturday 2 August 2025 is provided on page 2.**

## Major community benefits achieved

By implementing the Alfred Street off ramp closure, the project has achieved several significant benefits for the community.

These benefits include:

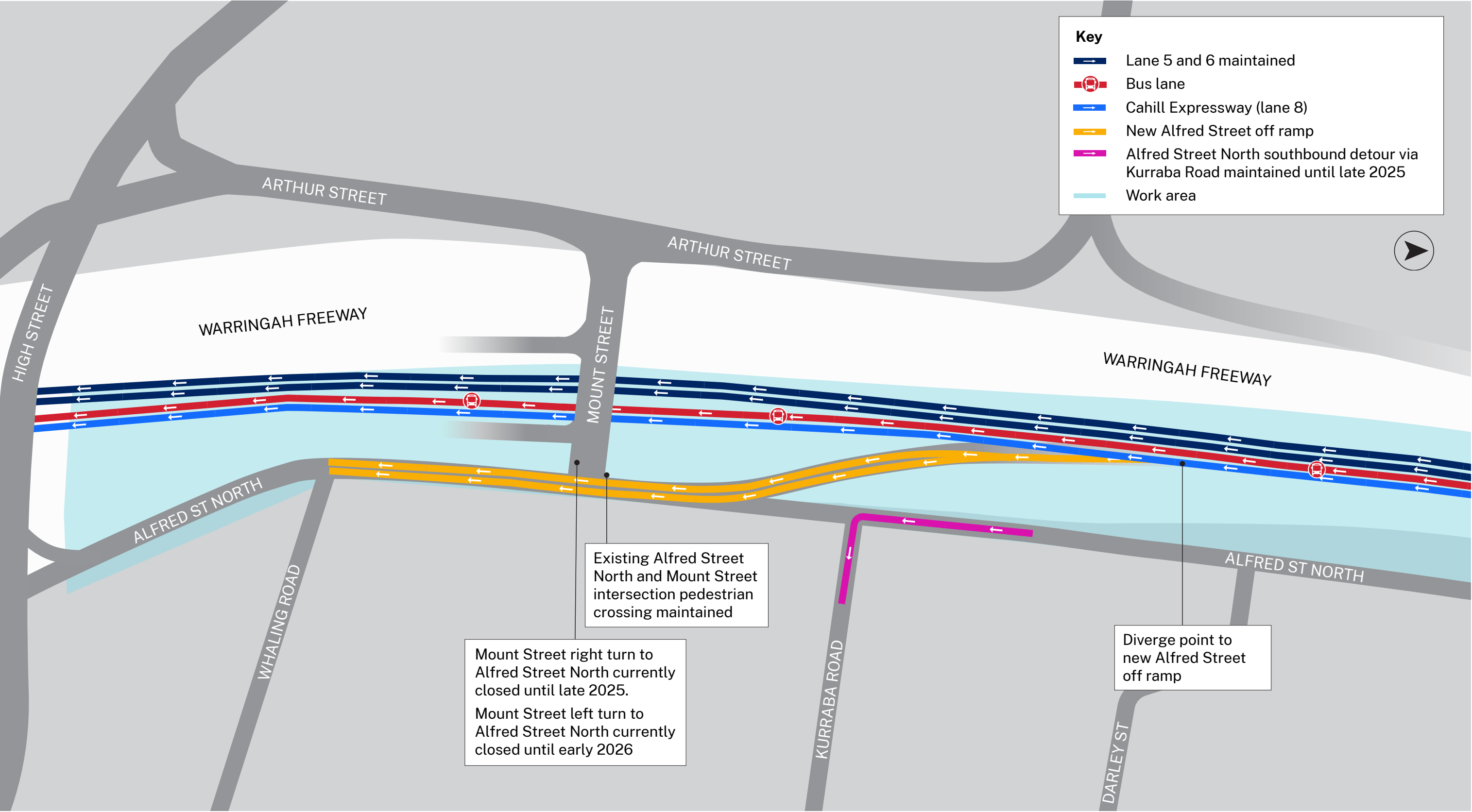
- completing work in this area 6 months earlier
- removing around 90 nights of noisy work
- removing up to 10 weekends of extended work
- eliminating 5 traffic changes that would otherwise be needed in this location.

## Mount Street & Alfred Street North intersection closure

Access to Alfred Street North southbound from Mount Street will remain closed to all traffic until late 2025, and access to Alfred Street North northbound from Mount Street will remain closed to all traffic until late 2025.

We are working as hard and quickly as possible to complete this intersection and reopen access. We appreciate your patience and apologise for the inconvenience.





## What work will we be doing?

From 10pm Friday 1 August to 6pm Sunday 3 August 2025, we will be continuing consecutive weekend day and night work along the freeway and at the Alfred Street off ramp work areas between High Street and Ridge Street.



Scan the QR code to view our August weekend work notification for more information about the work activities taking place from **10pm Friday 1 August to 6pm Sunday 3 August 2025** or online at [nswroads.work/wfuportal](https://nswroads.work/wfuportal).

We will be:

- installing and removing concrete safety barriers, fencing and signage
- relocating and installing utility services
- removing excavated materials and site levelling
- asphaltting and concreting work
- installing and removing line markings
- installing new street lighting, signage and landscaping.



Scan the QR code to view our latest landscaping notification or online at [nswroads.work/wfuportal](https://nswroads.work/wfuportal) for more information about landscaping in the area

## Traffic changes

Motorists are advised access to the temporary, shortened off ramp will be further south than the original off ramp. Please refer to directional signage and be prepared to exit the Freeway after the Ridge Street shared user bridge.

There will continue to be intermittent temporary closures of the off ramp over weekends to safely finalise work along the new off ramp structure like new landscaping, lighting and signage. We will notify you in advance of any temporary ramp closures occurring.

## Managing our impacts

Residents may experience periods of high noise throughout this work. The level of impact will vary depending on the proximity to work locations. To minimise the impact of this work we will:

- turn off machinery when not in use
- use acoustic blankets to minimise noise, where feasible
- direct temporary lighting down and away from houses
- fit equipment with devices to minimise noise, particularly non-tonal reversing beepers.

All work will be carried out in line with the project's environmental approvals. All our work zones and equipment laydown areas will be separated from local traffic, pedestrians and cyclists.

The equipment we will be using will include excavators, concrete saws, concrete hammers, rock breaking equipment, hydro-demolition saws, mobile cranes, line marking equipment, heavy vehicles including tipper trucks, concrete pumps, concrete and vacuum trucks, light vehicles, water carts, small power tools, elevated work platforms, asphalt compactors, vibratory rollers, generators, road profiling machines, asphalt paving equipment, rock bolting machines and bobcats, kerb paving machines.

For more information on how we manage noise, please refer to our 'Managing Construction Noise fact sheet' available online at [nswroads.work/wfuportal](https://nswroads.work/wfuportal) or scan the QR code.



## Contact us



Project Infoline **1800 931 189**



[whtbl@transport.nsw.gov.au](mailto:whtbl@transport.nsw.gov.au)



Visit the online portal at [nswroads.work/wfuportal](https://nswroads.work/wfuportal)



**For the latest traffic updates:**

Call 132 701, visit [livetraffic.com](https://livetraffic.com) or download the app Live Traffic NSW



**Interpreter service**

For languages other than English call **131 450**  
Mandarin • Cantonese • Japanese • Korean  
獲取英語以外的其他語言口譯協助服務可以致電**131 450**  
獲取英語以外的其他語言傳譯協助服務可以致電**131 450**  
英語以外の言語の通訳サービスは**131 450**までお電話ください。  
영어 외 기타 언어 통역 서비스는 **131 450**번으로 전화하세요

[www.transport.nsw.gov.au/privacy-statement#Your\\_Privacy](https://www.transport.nsw.gov.au/privacy-statement#Your_Privacy)