

# New England Highway Singleton Bypass

## Project update

December 2025



Australian Government

BUILDING AUSTRALIA



The Australian and New South Wales Governments are investing a total of \$700 million to build the Singleton Bypass. The bypass will improve travel times, freight efficiency and safety for local and interstate motorists. The project includes eight kilometers of new highway, with a single lane in each direction, a full interchange at Putty Road, connections at the New England Highway at the southern and northern ends of the bypass and at Gowrie. The bypass is expected to be open to traffic in late 2026, weather permitting.

## One year anniversary

The Singleton Bypass project has marked its one-year construction milestone since start of major work in September 2024. Activities on the structures and earthwork fronts are now at peak construction, with more than 300 team members working along the entire 8km alignment.

All six bridges are at various stages of construction, with the largest bridge located on the Hunter Floodplain and measuring 1.6km in length now 80 percent complete.

In July a major milestone was achieved when two newly constructed bridges – one across the Hunter River and the other across the New England Highway at Gowrie – were opened to haulage truck. This allowed material from McDougalls Hill to be transported inside the project corridor instead of through town. This will significantly reduce heavy construction traffic on the local road network.

To date, a total of 500,000m<sup>3</sup> of earthwork material has been placed across the project alignment. This is equivalent to 200 Olympic sized swimming pools. Construction of Singleton Council's new water pump station at Waterworks Lane is nearing completion, with testing, commissioning and pavement works currently underway.

## Key statistics



6 of 6 bridges under construction



435 of 435 girders installed



77 of 78 decks poured



800 of 1278 parapets (safety barriers)



207 of 207 bridge piles installed



72 of 72 headstocks installed



161 of 161 Columns poured



12 of 12 abutments poured

*As of end of early November 2025*





Installation of the Project's final bridge girders at the northern connection with Magpie Street.



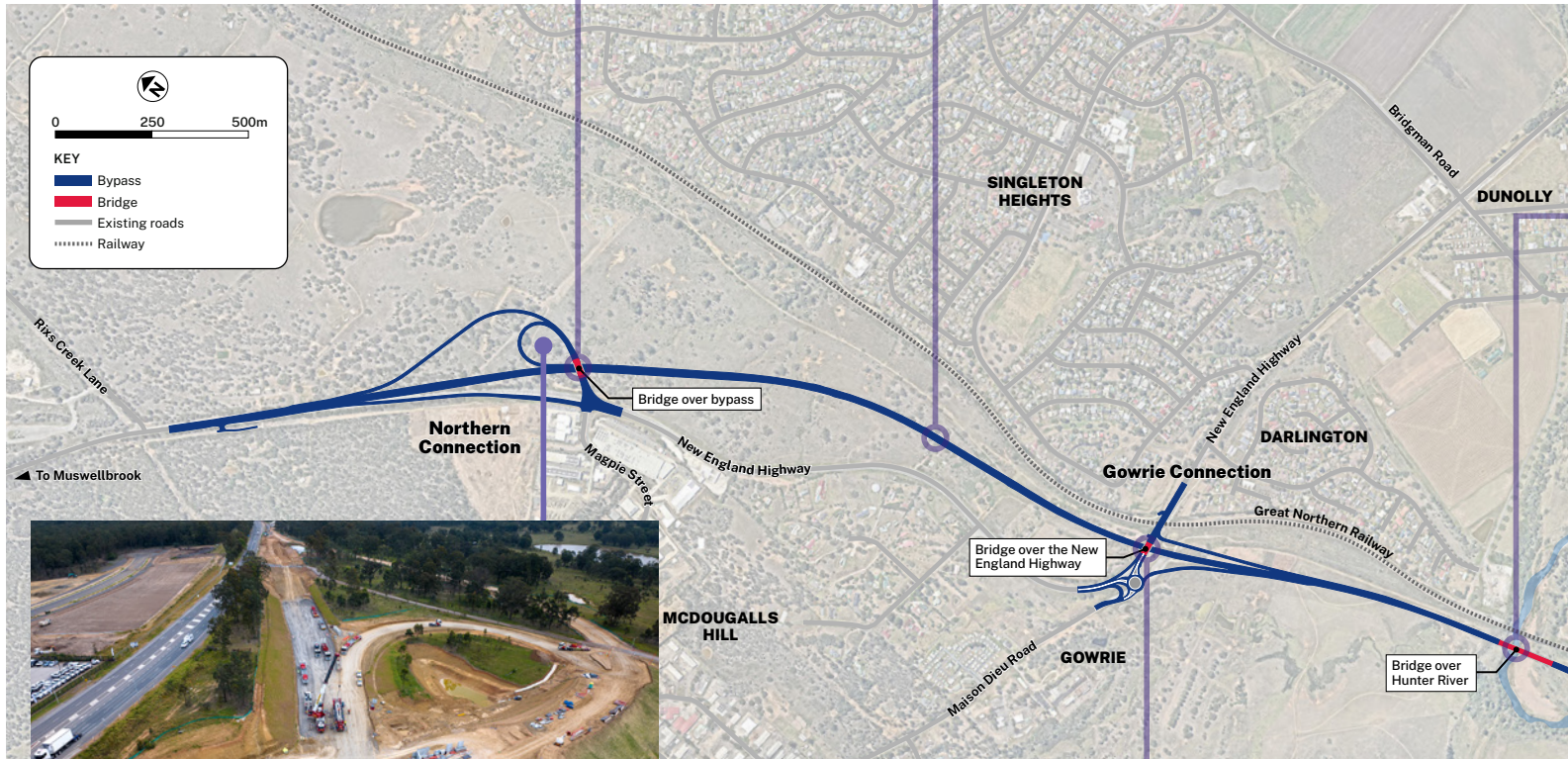
Earthworks at McDougalls Hill.



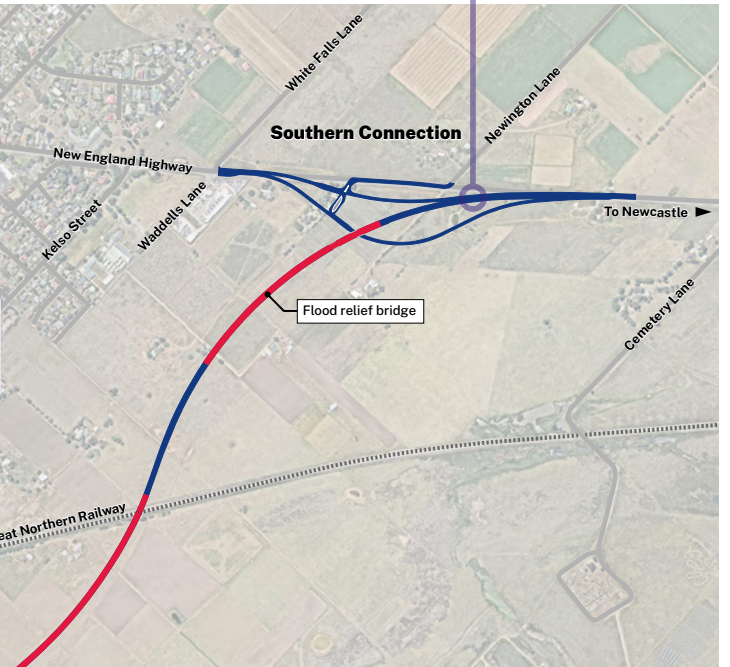
Bridge over the Rose Point floodway measures 99m in length at the Putty Road interchange.



Southern Connection at Whittingham and the start of the first bridge measuring 600m in length - looking southbound.



Bridge across the Hunter River measures 191 metres in length looking northbound towards Gowrie, with haulage trucks transporting material from McDougalls Hill in the north to the south of the Hunter River.



Looking northbound, the northern connection includes a G loop ramp configuration, providing southbound access onto the bypass.



Bridge over the New England Highway at Gowrie - looking southbound towards the Hunter River, with haulage trucks transporting material from McDougalls Hill in the north to the south of the Hunter River.



New water pump station at Waterworks Lane nearing completion.



Bridge that crosses over the Great Northern Railway, Hunter River floodplain, Army Camp Road and Putty Road measures 1638m in length - looking northbound.



Bridge works at the Northern connection with Magpie Street.



# Three month lookahead

Our main work activities between now and early 2026 include:

- bridge structures: delivery and installation of safety rails, concrete work, placement of asphalt, noise walls and safety screens
- drainage work
- earthwork
- start pavement construction including asphaltting and line marking
- completion of the new water pump station
- relocation and connection of water, electrical and sewer services
- construction of interchanges
- start of landscaping.

## See the project from above



Click on this QR code to take you to our project portal, where you can get a bird's eye view of the progress courtesy of a fly-over video. There are also monthly project update photos showing progress since work started in September 2024.

## Our work hours

**Monday to Friday: 7am to 6pm**

**Saturday: 8am to 1pm**

**Sundays and public holidays: No work**

To minimise traffic impact and to manage concrete pours, we are currently carrying out night work in the project corridor on weeknights between 6pm and 7am, weather permitting. Residents impacted by this work have been notified.



Bridge over Doughboy Hollow floodplain near Army Camp Road looking northbound

## Contact us



24-hour Project Infoline **1800 991 254**



**SBP-community@acciona.com**



**nswroads.work/singleton**



**Singleton Bypass Project  
PO Box 408 Singleton NSW 2330**



Visit the project webpage at  
**nswroads.work/singleton**



**Interpreter service**

For languages other than English please call 131 450

[www.transport.nsw.gov.au/privacy-statement#Your\\_Privacy](http://www.transport.nsw.gov.au/privacy-statement#Your_Privacy)