

Construction of the shared pedestrian and cyclist pathway between Bruce Street and Bestic Street

M6 Stage 1

August 2025



Transport for NSW acknowledges the Bidjigal, Dharawal, Gweagal and Gadigal clans of the Eora Nation as the Traditional Custodians of the lands on which we work and pays respect to Elders past and present.

As part of the M6 Stage 1 project, construction of the shared pedestrian and cyclist pathway continues in August 2025.

When we'll be working

Our standard work hours are from **7am to 6pm, Monday to Friday and 8am to 6pm, Saturday.**

We are approved to work out-of-hours from 6pm to 7am, for up to three weeknights per week, no more than two consecutive weeknights and a maximum of 10 nights per month.

Our planned out of hours are: 6, 7, 13, 14, 20, 21, 27, and 28 August.

What work are we doing?

Our day work will include:

- ongoing formwork and concrete work for the shared pathway, bridge structure and boardwalks, including boardwalk installation.
- excavating to install underground conduits and lighting poles for future pathway lighting along the alignment. This includes setting up electrical boards and connecting wires.
- constructing the foundation for the pedestrian and cyclist pathway between Bruce Street and Bestic Street.

- investigating existing underground services.
- delivering and relocating oversized plant equipment.
- maintaining environmental controls to manage erosion and sediment.
- delivering and removing of materials such as gravel, sandstone, concrete, reinforcement, ongoing earthworks, tree pruning, vegetation and tree removal.
- commencing landscaping work, including planting native plant species and new trees.
- commencing work to upgrade the crossing on West Botany Street, including cutting concrete, excavating and trenching as we prepare to install traffic lights.
- commencing work to upgrade the crossing on Bruce Street, including installation of communication conduits, cutting concrete, excavating and trenching.

Our out of hours work will include:

- commencing work to upgrade the crossing on West Botany Street, including cutting concrete, excavating and trenching as we prepare to install traffic lights.



What will this mean for you?

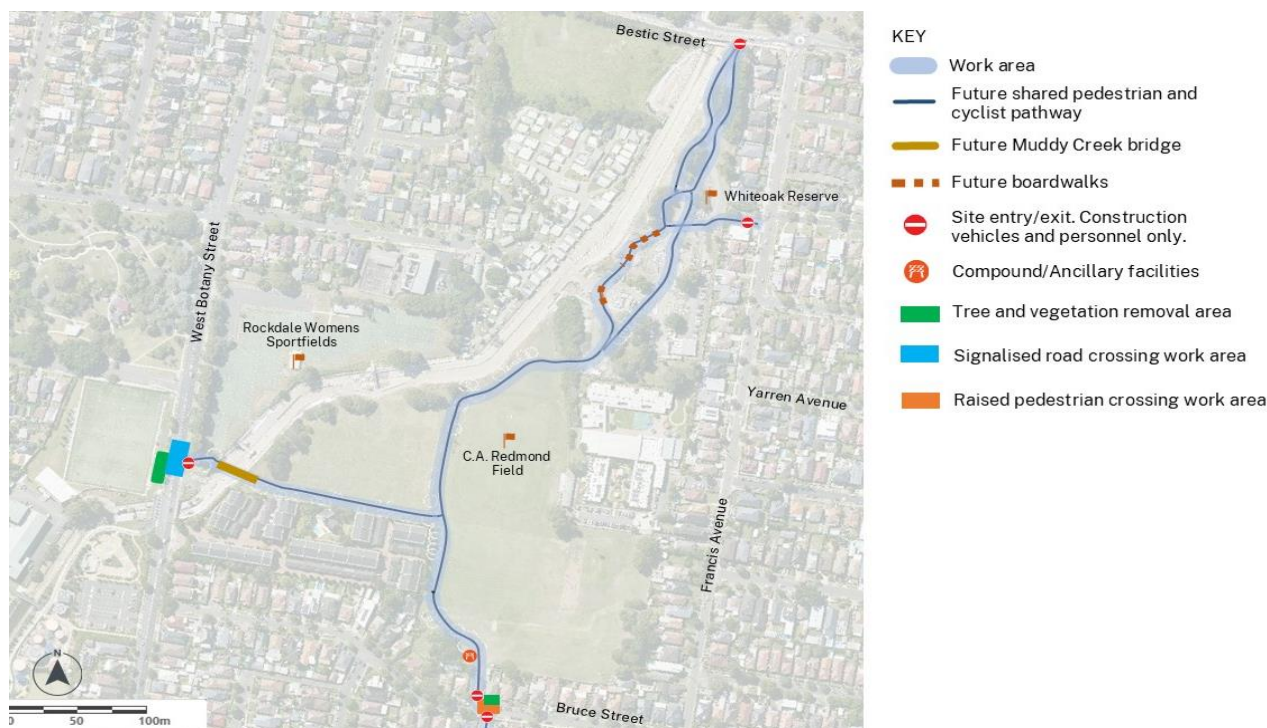
During our work, you may notice:

- vehicles entering site via Bruce Street, West Botany Street, Bestic Street and Francis Avenue
- intermittent periods of vibration from the use of compactors and rollers, and noise from machinery and equipment
- temporary traffic and pedestrian changes when we are working close to the footpath or road, such as temporary lane closures on West Botany Street near our site entry.

September and October out of hours work

Continuing work to upgrade the crossing on Bay Street, including the installation of traffic lights and associated works such as pram ramps and pavement.

Location of work area



Contact us



Project Infoline and 24-hour Construction Response Line **1800 789 297**



info@M6Stage1.com.au



PO Box 7261 Alexandria, NSW 2015



Visit the online portal go to **nswroads.work/M6portal**



Subscribe to updates at info@M6Stage1.com.au

Managing our impacts

We will manage dust by using a water cart and manage noise by using squawkers instead of beepers on vehicles and turning off equipment and vehicles when they are not being used. We monitor dust and noise levels to measure our impact to the local community. Respite for one hour will occur every three hours during high impact day activities. High impact work on Saturday will finish by 1pm.

Please follow our traffic signs and the directions of traffic control. Boom gates, barriers and stop-slow traffic management will be in place to ensure the safety of workers and the community when working on or near live traffic. Partial road closures, temporary parking removal and pedestrian diversions may be in place to facilitate works.



Interpreter service

For languages other than English call 131 450
Arabic • Greek • Hindi • Mandarin • Vietnamese

لطلب خدمة الترجمة الشفهية للغات غير الإنجليزية اتصل
بالرقم **131 450**

Για υπηρεσίες διερμηνείας σε άλλες γλώσσες εκτός από
τα Αγγλικά καλέστε το **131 450**

अंग्रेजी के अतिरिक्त अन्य भाषाओं के लिए दुभाषिया सेवा
131 450 पर कॉल करें

获取英语以外的其他语言口译协助服务可以致电**131 450**

Để có dịch vụ thông ngôn cho các ngôn ngữ khác tiếng
Anh, gọi số **131 450**