

Planned out of hours work from October to December 2025

Singleton Bypass

September 2025



Transport for NSW acknowledges the Wonnarua/Wanaruah people as the Traditional Custodians of the lands on which we work and pays respect to Elders past and present.

The Australian and NSW Governments have invested a total of \$700 million to build the Singleton Bypass. Major construction work on the bypass started in September 2024. Work continuing includes bridge construction, earthwork, relocation and cut over of water and sewer utilities and pavement work.

What out of hours work are we doing?

Over the next three months we will be carrying out some out of hours work at different locations along the project alignment. This work includes:

- earthwork
- concrete work
- relocation and connection of water, electrical and sewer services
- roadwork including line marking, asphaltting, placement of temporary barriers
- delivery and unloading of oversize equipment and structures including concrete bridge girders.

When and where we'll be working

To maintain safety for road users and workers and to keep traffic moving during peak travel times, work will be carried out outside of standard construction hours from the beginning

of October to mid December 2025, between **6pm and 7am on weeknights**, weather permitting.

Some work will be carried out on Saturdays. To manage potential impact on electrical, water and sewerage networks, some work will be required on Saturday evenings and Sundays.

Work will be carried out along the project alignment and on the New England Highway between Range Road Whittingham to Rixs Creek Lane, Rixs Creek.

We have included a map to show you the project corridor.

What will this mean for you?

These activities have been assessed as having a low to moderate noise impact, involving the following equipment and activities:

- earthworks including use of rollers, excavators, compactors, cranes and vacuum trucks
- concrete placement works using agitators and pumps
- water and sewer service connection work including the use of vacuum trucks, pumps, excavator, trucks
- roadwork including use of paving machine, line marker machine, line marking removal machine
- delivery and placement of concrete girders including use of cranes and trucks



- out of hours activities may also include the use of hand tools, light vehicles, lighting towers, generators, traffic controllers and signage
- noise from machinery and equipment.

Managing our impact

Where possible, we will carry out work during the day, however ongoing work outside of standard construction hours will be needed to maintain safety for road users and workers. Our approved standard construction hours are 7am to 6pm Monday to Friday and 8am to 1pm on Saturday.

For any out of hours work we will minimise noise impact by carrying out work located closer to residential properties earlier in the night and switching off vehicles and equipment when not in use. Noise blankets may be used for activities near residences.

Night work will be carried out in stages along the bypass route to manage impact on residents.

Oversize/Overmass (OSOM) vehicles will also be making deliveries to site.

Temporary speed reductions and lane closures may be in place on the New England Highway and adjoining local roads for the safety of workers and motorists.

Please keep to the speed limits and follow the direction of traffic controllers and signs.

Keeping you informed

Directly impacted residents will receive a specific notification ahead of work occurring. VMS and Live Traffic updates will also be used to advise motorists of traffic changes.

Looking ahead

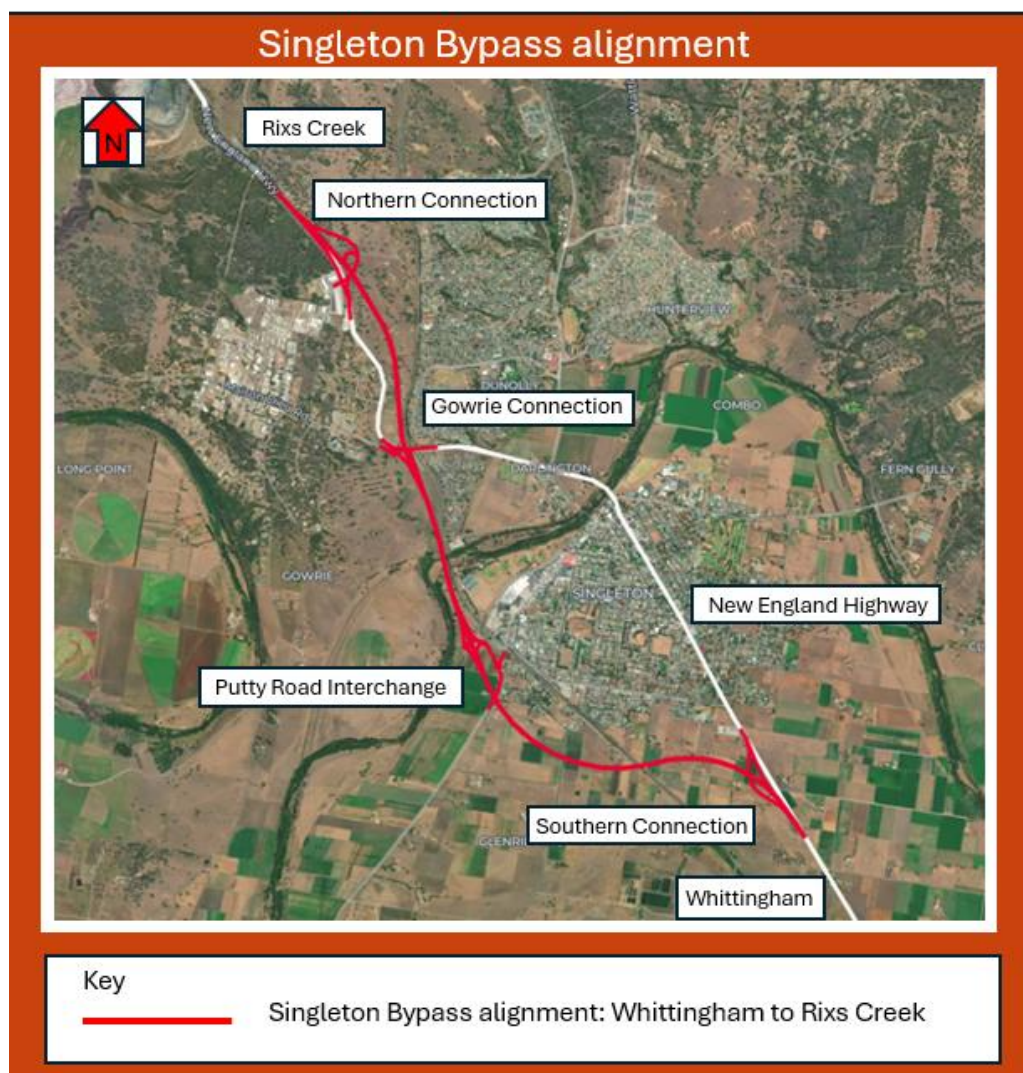
We will continue to keep the community updated as work on the project progresses. The bypass is expected to open to traffic in late 2026, weather permitting.

Complaints or queries

If you have any complaints or queries, please contact the Project Line on **1800 991 254**



Location of work area



Contact us



24-hour Construction Response Line
1800 991 254



SBP-community@acciona.com



Nswroads.work/singleton



Singleton Bypass Project PO Box 408
Singleton NSW 2330



Visit project website and interactive portal



Interpreter service

For languages other than English call **131 450**
Arabic • Greek • Hindi • Mandarin • Vietnamese

لطلب خدمة الترجمة الشفهية للغات غير الإنجليزية اتصل
بالرقم **131 450**

Για υπηρεσίες διερμηνείας σε άλλες γλώσσες εκτός από
τα Αγγλικά καλέστε το **131 450**

अंग्रेजी के अतिरिक्त अन्य भाषाओं के लिए दुभाषिया सेवा
131 450 पर कॉल करें

获取英语以外的其他语言口译协助服务可以致电**131 450**

Để có dịch vụ thông ngôn cho các ngôn ngữ khác tiếng
Anh, gọi số **131 450**

www.transport.nsw.gov.au/privacy-statement#Your_Privacy



For the latest traffic updates:

Call 132 701, visit livetraffic.com or download
the app Live Traffic NSW



To subscribe to the email distribution list for this project, please contact SBP-community@acciona.com

Page 3 of 3