



## Appendix D DMRP Stakeholder Engagement Plan

### Glossary (abbreviations)

Term / acronym	Definition
The Plan	Stakeholder Engagement Plan
The Project	Hazelwood Rehabilitation Project
EES	Environment Effects Statement
DMRP	Declared Mine Rehabilitation Plan
DTP	Department of Transport and Planning
GLaWAC	Gunaikurnai Land and Waters Aboriginal Corporation
MRSDA	Mineral Resources (Sustainable Development) Act 1990 (Vic)



## Table of Contents

1. Purpose of this document .....	3
2. About the Hazelwood Rehabilitation Project.....	4
3. Engagement to date .....	8
4. Principles for engagement.....	9
5. Alignment with the Environment Effects Statement.....	11
6. Stakeholders .....	13
7. Engagement approach, methods and tools.....	16
8. Engagement Program .....	18
9. Timings .....	23
Appendix A – Stakeholder Register .....	24



## 1. Purpose of this document

This Stakeholder Engagement Plan ('the Plan') sets out ENGIE Hazelwood's approach to engaging with stakeholders during the preparation and implementation of a Declared Mine Rehabilitation Plan (DMRP).

Licensees of all mines (including declared mines) have a requirement under section 39A of the Mineral Resources (Sustainable Development) Act 1990 (Vic) for ongoing engagement throughout the period of the mine licence, including rehabilitation.

Following works to decommission and demolish major infrastructure that was once part of the Hazelwood Power Station and operating mine, ENGIE has actively engaged with the community and key stakeholders to create a rehabilitation plan focused on safety, stability, sustainability, and future productive land use.

This Plan is a sub-plan of and appendix to the DMRP. It builds on previous engagement with key stakeholders, Traditional Owners and neighbours and sets out specific actions ENGIE will take to consult with key stakeholders and gather inputs into the Hazelwood DMRP, including:

- proposed rehabilitation approaches
- potential end land-uses for the rehabilitated site
- potential risks and liabilities after ENGIE relinquishes the mine licence
- expectations for ongoing monitoring and site maintenance.

Detailed engagement approaches included in this plan cover the period up to and including the formal exhibition of the draft DMRP in July 2025. A high-level summary of planned, ongoing engagement is also included to provide visibility of how ENGIE will continue to provide information and support ongoing relationships with key stakeholders as it moves through later phases of mine rehabilitation, passive management and eventual licence relinquishment.

The draft DMRP will be provided for public feedback during exhibition and will be revised in response to matters raised through exhibition and submissions.

### **DMRP Stakeholder Engagement Plan requirements**

This Plan has been developed to align with relevant requirements in the Mineral Resources (Sustainable Development) (Mineral Industries) Regulations 2019 (MRSDMI Regulations), section 64G and the Ministerial Guidelines for preparation of Declared Mine Rehabilitation Plans Draft – November 2024.



## 2. About the Hazelwood Rehabilitation Project

The former Hazelwood Power Station and Mine is on Gunaikurnai Country in the Latrobe Valley in Victoria, immediately south of the township of Morwell, approximately 150km east of Melbourne.

The Hazelwood site operated for over 50 years and closed in 2017.

The objective of the Hazelwood Rehabilitation Project ('the Project') is to deliver a safe, stable, sustainable, and non-polluting landform on the Hazelwood Mine and the Hazelwood Power Station site.

This project involves:

- final decommissioning activities
- earthworks to reprofile steep slopes
- reinstatement of water courses to a more natural alignment
- the creation of a pit lake, and
- development of a site able to accommodate various future land uses.

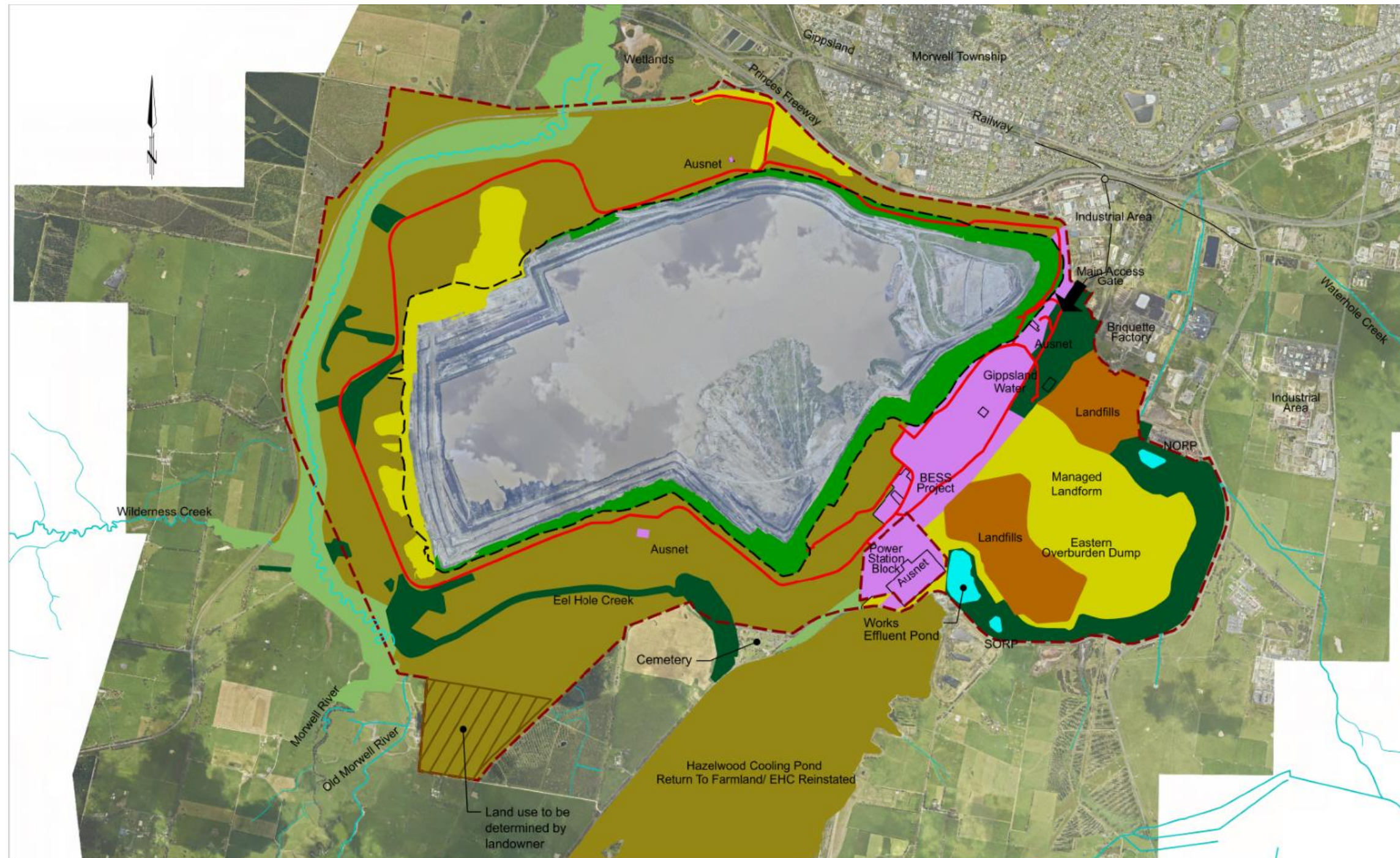
Central to the Project is the vision for a pit lake, by filling the mine void with water over a period of 10-15 years depending on climatic conditions and water availability, and by using surface water under an existing commercial agreement in addition to groundwater. This vision has been derived and refined over several years and has been underpinned by a robust base of technical evidence.

Key design features of the proposed pit lake aim to:

- provide long-term passive geotechnical stability for the mine void and surrounds
- minimise the fire risk as low as reasonably practicable
- provide opportunities for interconnection with adjacent waterways to provide regional flood mitigation capacity
- rehabilitate areas to allow public access and agriculture interspersed with waterways and native revegetation.

Figure 1 shows the current draft rehabilitation concept for the Hazelwood site.





Background Aerial Photo taken 28/10/2024

Paper Size A3

0 200 400 600 800 1000m  
SCALE 1:30,000 AT ORIGINAL SIZE

**LEGEND**

Conservation Offsets  
Conservation Areas  
Steep Grassed  
Farmland  
Public Access/ Passive Area

Managed Landform  
Industrial Area  
Waterbodies  
Mining Licence Boundary  
Mine Crest

Roads  
Creeks/ Rivers



HAZELWOOD REHABILITATION PROJECT  
MINING LICENCE  
DECLARED MINES REHABILITATION PLAN  
SITE INFRASTRUCTURE  
LAND USE PLAN

Drawing No. 12666965  
Job Number  
Revision A  
Date MAY 2025

Figure xx

HAZELWOOD POWER, PO BOX 195, MORWELL, VICTORIA, 3640, AUSTRALIA

FILE LOCATION: N:\A1\Transmittal\Projects\12666965\LAND\Drawings\12666965\_FIG019\_Land Use Plan.dwg

Figure 1 Hazelwood Mine Rehabilitation Concept Plan





The long-term aim is for a site that can leave a positive legacy for the Latrobe Valley and Gippsland region. Key site elements with potential to support this aim include:

- a proposed public viewing area with carpark, visitor hub, journey track, viewing platform and potential walking/bike track linking to Morwell Township
- a lake area to be used by the community, fauna and adjoining pastoralists
- designated areas for passive recreation, including walking and bike riding through pasture, native revegetation, and waterways
- pasture for light grazing or public open space
- patches of remnant vegetation throughout the site to be retained and enhanced with supplementary planting
- opportunities for new power generation, storage and distribution
- connection from the Morwell River to direct some high flood flows into the mine void during high water events. The Morwell River will remain in its current location and will not be impacted by diversion of water during high flow events.

## 2.1 Declared Mine Rehabilitation Plan

A DMRP is required to describe how a mine's closure is being planned, scientifically informed, and executed, in accordance with the *Mineral Resources (Sustainable Development) Act 1990*, and *Mineral Resources (Sustainable Development) (Mineral Industries) Regulations 2019*.

ENGIE Hazelwood's DMRP will:

- detail the plan for mine closure, post rehabilitation of the site, and include the system for managing any impacts on the community and the environment
- address the specific criteria that mine operators must meet for mine closure – ensuring the mine land is safe, stable, and in a sustainable condition to enable relinquishment of the site and mining licence
- include measures to ensure potential public health and infrastructure risks are addressed; erosion and fire risks are managed, and future suitability and water use is managed responsibly
- provide a post-closure monitoring and maintenance plan to manage any future risks and impacts, including how ENGIE will keep community and stakeholders informed when the DMRP is being delivered
- ensure both identified key stakeholders and the broader public have genuine opportunities to contribute to and participate in the planning and development of the DMRP.

ENGIE Hazelwood's DMRP will be reviewed and assessed by the Victorian Government. It is intended that DMRPs are iterative – the ENGIE Hazelwood DMRP and supporting management plans will be continuously reviewed and updated as knowledge of the site grows.

Similarly, this DMRP Stakeholder Engagement Plan will be iterative. Following formal consultation on a draft DMRP, the plan will be updated to include:

- a report on consultation undertaken on the draft DMRP that outlines how the matters raised through consultations and in any written submissions were considered and responded to
- attached copies of any written submissions received in response to draft DMRP consultations.

### 3. Engagement to date

Community and stakeholder input continues to play an important role in the Hazelwood Rehabilitation Project (the Project).

Communities, Traditional Owners and stakeholders have been engaged on the mine closure and rehabilitation through working groups, advisory committees and community engagement programs since 2017.

General stakeholder input has been gathered as part of ENGIE's comprehensive and transparent consultation approach designed to fulfil the requirements of the Project's longer running, bilateral Environmental Effects Statement (EES) and Environment Protection and Biodiversity Conservation Act 1999 (Cwth) (EPBC) assessment process, which commenced in 2022 and continued up until recently. The Project's EES is expected to go on public exhibition in 2026.

Figure 2 shows the phases of the Hazelwood Rehabilitation Project, with engagement by ENGIE commencing in 2017 to coincide with mine closure and the commencement of rehabilitation works at the site.

Engagement activities will continue throughout the *active rehabilitation* period shown in the timeline below and will include specific engagement efforts to inform and support the development of the Hazelwood draft DMRP.

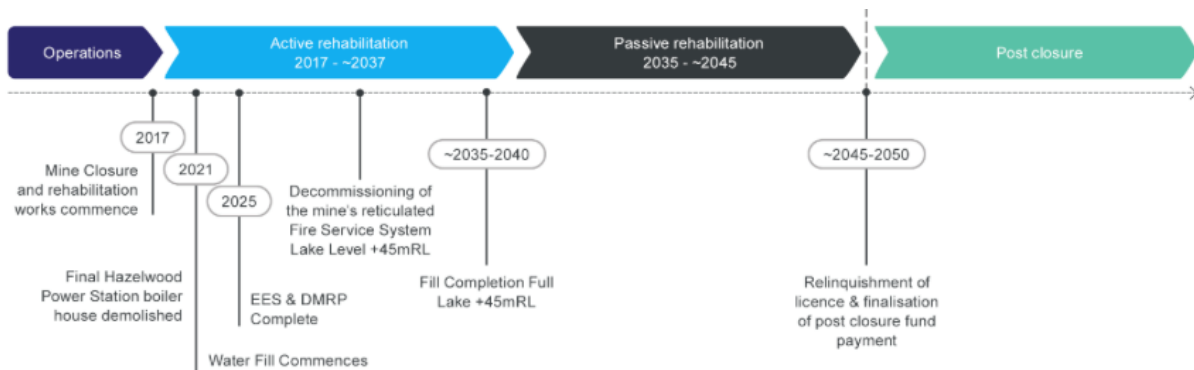


Figure 2 Hazelwood Rehabilitation Project timeline

In line with the *Mineral Resources (Sustainable Development) (Mineral Industries) Regulations 2019* (MRSDMI Regulations), section 64G and the *Ministerial Guidelines for preparation of Declared Mine Rehabilitation Plans* Draft – November 2024, stakeholder consultation on the Hazelwood draft DMRP has sought to:

- inform prescribed stakeholders, neighbours, Traditional Owners and local communities about the proposed project, the DMRP process and opportunities for participation
- help statutory and non-statutory stakeholders understand the project by providing information about objectives, benefits, principles guiding design and development, and work done to identify, understand and address potential risks



- actively encourage prescribed stakeholder participation and seek targeted input during the preparation of the draft DMRP to obtain specific feedback on measures that respond to identified risks, management controls and potential future land uses
- develop a formal process for broader community and stakeholder consultation and submissions on key elements of the DMRP plan
- demonstrate how feedback has been considered in the development of the project and the DMRP.

#### **4. Principles for engagement**

ENGIE Hazelwood's principles for engagement are informed by Resources Victoria's statutory engagement guidelines and codes of practice which are designed to support the delivery of a sustainable earth resource sector. The engagement principles are set out below.

##### **Aboriginal communities and Traditional Owners**

Meaningful relationships are established with Aboriginal communities and Traditional Owners.

- Meaningful engagement occurs for all projects, regardless of Native Title requirements.
- Effort is made to identify the relevant Aboriginal communities and Traditional Owners. They may be represented by land corporations or other groups. Do not limit to just groups with formal recognition under the Native Title Act or other legislation.

##### **Understand the affected community**

Community members impacted by the project are identified and understood.

- Any person or group whose interests are likely to be affected by the project are identified and the impact the project will have on them is understood.
- These interests are not confined to a strict legal interest in land or property – it includes cultural interest of First Nations peoples and community of place connection of local residents.

##### **Engagement tailored to the community**

Engagement level and methods are appropriate for the project and the community.

- Engagement goals, levels and methods are appropriate for community members and groups affected by the project. Different stakeholders are likely to require varied engagement levels or methods.
- Information about projects is provided in a way that is accessible and appropriate for the community members and groups being engaged.
- Community engagement is appropriate for the size, location and potential impact of the project.

##### **Genuine and informed prior consultation**

Engagement is based on genuine and informed prior consultation.

- Community members are given a genuine opportunity to express their concerns and provide feedback.
- Sufficient and accessible information has been provided for community members to assess how a project will impact them.
- Consultation has occurred prior to work commencing.

- Community members are given information on how their concerns will be taken into account.

### Ongoing engagement

Community engagement occurs through the lifetime of the project.

- Community engagement is ongoing throughout the project, with engagement level and methods changing as the potential community impact of the project changes.
- Projects provide community members with ways to raise any issues or concerns throughout the project.

### 4.1 Commitment to IAP2 levels of engagement

The International Association for Public Participation (IAP2) defines public participation as the involvement of those affected by a decision in the decision-making process.

IAP2's core values of public participation include promoting sustainable decisions by recognising the interests of all decision-makers, actively facilitating the involvement of those potentially affected by or interested in a decision, providing participants with the information they need to participate in a meaningful way, and communicating to participants how their input affected the decision (Source: IAP2 Federation).

Guided by the IAP2 Spectrum of Engagement which assists with defining the public's role in any public participation process, consultation for the DMRP will involve:

**Informing** people about all aspects of the DMRP project, its objectives, development and engagement to date, the proposal, project timeline and next steps.

**Consulting and involving** prescribed stakeholders in decision-making, by providing information about the project and risk assessments and providing an opportunity to ask questions and provide feedback.

**Collaborating** with relevant agencies including Earth Resources Regulation, DEECA, and MLRA as assessment and DMRP decision-makers.

### 4.2 Relevant legislation

Section 84AZU(4) of the Mineral Resources (Sustainable Development) Act 1990 (Vic) (MRSD Act) requires ENGIE Hazelwood to (at a minimum) consult with a range of "prescribed" stakeholders in relation to a DMRP, which are listed in Section 64G of the MRSD Regulations.

The *Ministerial Guidelines for preparation of Declared Mine Rehabilitation Plans Draft – November 2024* note that a DMRP stakeholder engagement plan should be used to inform consultation during development of the DMRP and to inform formal consultation on a draft DMRP. These guidelines set out requirements to include in a stakeholder engagement plan, as shown in Table 1.

*Table 1 DMRP engagement plan requirements*

Plan requirements	Relevant section of this Plan
-------------------	-------------------------------

The identified persons or classes of persons, including those listed in regulation 64G, Traditional Owners and community	Table 1: Prescribed stakeholders
A plan for early consultation with the identified stakeholders on the development of the DMRP	Page 15: Phase 1: Early consultation with stakeholders on the development of the DMRP
A plan for formal consultation with identified stakeholders on the draft DMRP	Page 17: Phase 2: Formal consultation with identified stakeholders on the draft DMRP
A strategy and milestones for intended ongoing engagement with identified stakeholders during rehabilitation and closure of the mine	Page 19: Phase 3: DRMP communications – informing stakeholders about how rehabilitation works are being monitored and managed during rehabilitation and mine closure
A plan that sets out how the licensee will carry out its section 39A duty to consult with the community throughout the period of the licence	This Stakeholder Engagement Plan

## 5. Alignment with the Environment Effects Statement

ENGIE Hazelwood is progressing a comprehensive and transparent planning and consultation process for the Hazelwood Rehabilitation Project.

The project will be delivered in accordance with the requirements of relevant statutory planning and environmental approvals and their conditions, and through the development and implementation of environmental management systems and plans.

Figure 3 provides an outline of the required environmental management systems and plans as well as their interrelationships with relevant statutory approvals and consents. Different plans will be required for areas within and outside of the boundary of Mining Licence MIN5004.

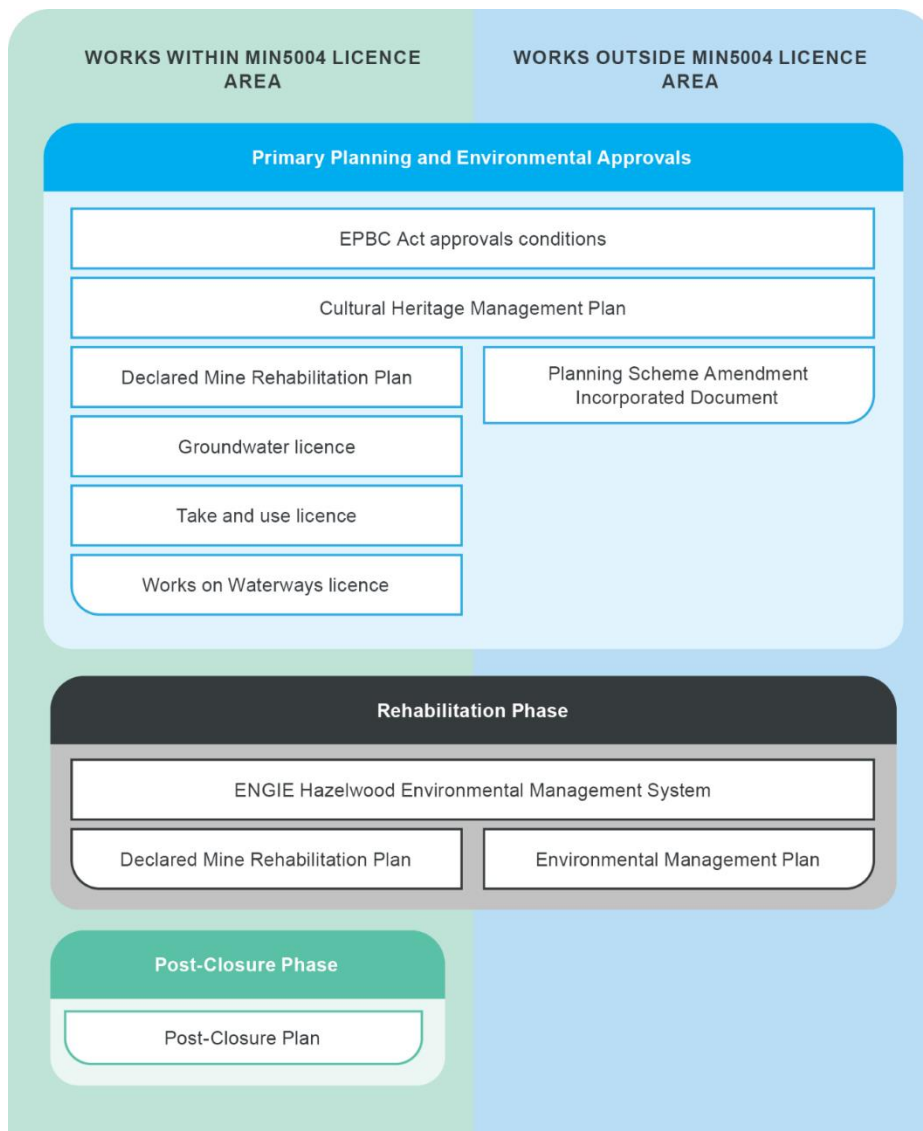


Figure 3 Outline of the required environmental management systems and plans

Central to the success of the Hazelwood Rehabilitation Project is minimising potential impacts and protecting important natural systems. The project was referred by ENGIE Hazelwood to the Minister for Planning. In February 2022, the Minister for Planning determined an Environment Effects Statement (EES) would be required for the Hazelwood Rehabilitation Project.

An EES is a well-established process under the Environment Effects Act 1978, that provides a comprehensive framework for assessing projects with the potential for significant environmental effects.

The matters to be assessed in the EES are determined in the Scoping Requirements prepared by the Department of Transport and Planning (DTP) and include:

- Water resources and environmental values
- Landform safety and stability
- Amenity, socio-economic and land use

- Cultural heritage
- Biodiversity and ecological value.

The EES is being developed through the process shown in Figure 4.



Figure 4 Summary of Environment Effects Statement process

The EES Scoping Requirements set out a requirement to provide “a program for community consultation, stakeholder engagement and communications for all stages of the project, that would need to be integrated into existing site consultation plans. This will include opportunities for local stakeholders to engage with the proponent to seek responses to issues that might arise during project implementation and a process for complaints recording and resolution”.

This requirement will be met through the preparation and delivery of this Stakeholder Engagement Plan for the DMRP.

## 6. Stakeholders

ENGIE has identified persons, organisations, communities, and groups that it considers should be involved in Project consultation activities based on:

- their potential interest in the Project and its development
- the likelihood that they will be affected by proposed Project activities
- their perceived ability to contribute to Project outcomes.

This includes prescribed stakeholders as specified in Section 84AZU(4) of the MRSD Act. Table 2 provides a list of prescribed stakeholders relevant to the Project.

Table 2 - Prescribed Stakeholders

Category	Description	Stakeholders for this Project
Rehabilitation Authority	Independent authority working with community, industry and government to facilitate the rehabilitation of declared mine	Mine Land Rehabilitation Authority (MLRA)



	sites	
Ministers	The Minister responsible for administering the EES Act and the Minister for Crown Lands	Minister for Planning Minister for the Environment
Neighbouring landholders	Non associated residences and businesses within 5km of the proposal or direct adjoining land	Neighbouring Landowners within 5km of the site
Responsible authorities	A responsible authority for the area in which the declared mine land is located	Latrobe City Council
State and Federal Government Agencies	Any public sector body that is responsible for the authorisation or oversight of a matter in the declared mine rehabilitation plan	<ul style="list-style-type: none"> <li>• Department Energy, Environment and Climate Action</li> <li>• Earth Resources</li> <li>• Department Transport and Planning</li> <li>• Fire Rescue Victoria</li> <li>• West Gippsland Catchment Management Authority</li> <li>• Worksafe</li> <li>• EPA</li> <li>• Southern Rural Water</li> <li>• Heritage Victoria</li> <li>• Department of Health</li> <li>• First Peoples State Relations</li> </ul>
Traditional Owners	Registered Aboriginal Parties and Traditional Owner groups within the area in which the declared mine is located	Gunaikurnai Land and Waters Aboriginal Corporation (GLaWAC)
Community	Local community with an interest in the project	<p>The communities in the Gippsland Region set out in column 2 of Schedule 2 to the Regional Development Victoria Act 2002 (Vic), being communities within:</p> <ul style="list-style-type: none"> <li>• Bass Coast Shire Council</li> <li>• Baw Baw Shire Council</li> <li>• East Gippsland Shire Council</li> <li>• Latrobe City Council</li> <li>• Mount Baw Baw Alpine Resort</li> <li>• South Gippsland Shire Council</li> <li>• Wellington Shire Council</li> </ul>

Broader regulatory, community and interest groups will also have an interest in this Project and include:

- Broader Victorian government departments and agencies, local MPs

- Federal government, including MPs
- Industry, tourism and business
- Environmental groups
- Emergency services
- Local community interest groups
- Media

Appendix 1 provides a detailed stakeholder analysis including discussion of relevant impacts and interests for each stakeholder type, and the level of engagement that will be tailored to each stakeholder.

### **6.1 Traditional Owners**

The Gunaikurnai people are the Traditional Owners and hold native title over parts of the proposed project area.

Gunaikurnai Land and Waters Aboriginal Corporation (GLaWAC) are the Registered Aboriginal Party (RAP). Providing accurate and timely information to the Gunaikurnai people is a necessary and important responsibility of the DMRP development process.

ENGIE Hazelwood continues to foster an active partnership with GLaWAC to seek involvement on a range of topics beyond Cultural Heritage, including exploring options and aspirations for future land uses at the site.

## 7. Engagement approach, methods and tools

ENGIE Hazelwood will build on engagement activities, relationships and communications already established to help communities and stakeholders understand the EES process. This will ensure that the DMRP engagement approach aligns with previously established stakeholder preferences for engagement and systematically captures their feedback and concerns.

There are three key phases to the DMRP Engagement process:

1. Early engagement on the development of the Draft DMRP (pre-July 2025 exhibition)
2. Formal consultation on the Draft DMRP including 60 day exhibition (Q3 2025)
3. Ongoing engagement informing stakeholders about how rehabilitation works are being monitored and managed during site rehabilitation (following approval of the DMRP).

More detail on each of these phases is set out in Table 3 and appendix 1.

*Table 3 Summary of DMRP engagement phases*

DMRP Stage	1. Early engagement on the Draft DMRP	2. Formal consultation and Exhibition	3. Ongoing engagement during implementation of the DMRP
<b>Key activities</b>	<ul style="list-style-type: none"> <li>Briefing prescribed agency, government stakeholders and Traditional Owners on the purpose of the DMRP</li> <li>Seeking input on post closure land uses and concept landforms</li> <li>Seeking input on risks</li> <li>Seeking advice on post closure monitoring</li> <li>Confirming preferences for ongoing engagement</li> </ul>	<ul style="list-style-type: none"> <li>Formal exhibition of the Draft DMRP and invitation of submissions from prescribed communities and others</li> </ul>	<ul style="list-style-type: none"> <li>Informing prescribed stakeholders and community of DMRP approval and updating on the rehabilitation program and mine licence relinquishment</li> </ul>
<b>How feedback will be considered</b>	<ul style="list-style-type: none"> <li>Considered and where relevant contemplated and/or included in Draft DMRP</li> </ul>	<ul style="list-style-type: none"> <li>Considered and where relevant adapted into Draft DMRP (minor updates only expected)</li> </ul>	<ul style="list-style-type: none"> <li>Considered and where relevant, used to update further iterations of the DMRP</li> </ul>

### 7.1 Consultation tools and activities

To ensure engagement is effective, ENGIE Hazelwood will use several targeted engagement tools (Table 4) and engagement methods (Table 5) to ensure transparent, timely information on the DMRP is available to inform prescribed stakeholders and the broader community of progress on the DMRP.

*Table 4 Communication tools*

Print and digital communication tools	
Community updates	Updates available online and sent to key stakeholders in advance of key DMRP milestones (i.e. Exhibition).
Factsheets	A detailed DMRP project factsheet available in hardcopy and online.
Print advertising	Paid advertising will help to raise awareness of the project Exhibition, the engagement process and opportunities to be involved. Noting this is also a regulatory requirement.
Maps and visual aids	Maps showing the project location will provide context in relation to the local area and proposed rehabilitation concepts. Maps will be available online and will also be used to support face-to-face engagement activities.
Project website	The specific page on the DMRP website will be updated regularly as new information about the project becomes available. Documents directly relating to the DMRP review process will be added as they are made final.
Email updates	Email updates (Electronic Direct Mail – EDM) will be sent to project news subscribers with project information and links to the project website, factsheets and DMRP documentation.
Email enquiries	An email enquiry facility will be available via the Project website for submission of questions and requests.

Table 5 Engagement methods

Engagement methods	
Events	Where appropriate, ENGIE will leverage local face to face events to share information about the DMRP process and invite feedback.
Conversations with local stakeholders and nearby landholders	Some community members and impacted stakeholders may have limited access to online engagement tools and information. Phone calls and doorknocks will be used to encourage participation in engagement activities and provide project information.
Stakeholder meetings	Building on existing relationships to maintain transparent and regular communication with stakeholders to encourage participation and invite input.
Technical Reference Group (TRG)	The TRG is convened by DEECA to coordinate advice between DEECA, the project team and key stakeholders throughout the EES process.
Environmental Review Committee	The Environmental Review Committee (ERC) is established as part of the mine licence. The Hazelwood ERC includes members of the local community, agency

	representatives, local council and site representatives. The ERC meets at least twice a year. It was briefed on the DMRP at its meeting in May 2025.
--	--

## 8. Engagement Program

The three key phases of the DMRP Engagement process are:

1. Early engagement on the development of the Draft DMRP (pre-July 2025)
2. Formal consultation on the Draft DMRP including 60-day exhibition (July & August)
3. Ongoing engagement informing stakeholders about how rehabilitation works are being monitored and managed during site rehabilitation (following approval of the DMRP).

### Phase 1: Early consultation with stakeholders on the development of the DMRP

ENGIE Hazelwood's engagement activities over the last several years, while focused on broader environmental assessment processes required for the rehabilitation Project, have also informed the preparation of this DMRP. Despite this extensive engagement program, ENGIE has still sought to specifically inform key stakeholders, neighbours, Traditional Owners and local communities about the proposed DMRP process and opportunities for participation.

The following table sets out these specific engagement activities utilised for this first phase of development of the DMRP.

*Table 6 Key engagement tactics - Phase 1 consultation*

Engagement method	Description	Target stakeholders	Frequency
Informal meetings	Opportunities for initial introductions and to encourage open dialogue and discussion	Neighbours, community groups	As required
Formal briefings	Structured meeting opportunities, usually with a set agenda, to provide a specific briefing, update on the Project and seek feedback on key elements of the plan.	Rehabilitation Authority, Ministers, Responsible authorities, State and Federal Government Agencies, Traditional Owners	A minimum of two briefings have been offered to each relevant stakeholder and provided if requested.
Site tours for groups	Onsite briefings provide an opportunity for neighbours and key stakeholders to meet with the project team to express concerns, provide feedback and receive updates	All stakeholder groups	As required
Letters	Dedicated correspondence to share project updates, news and offer personal briefings.	All stakeholder groups	As required



Presentation packs	Detailed explanatory information packs to support project briefings and meetings	Rehabilitation Authority, Ministers, Responsible authorities, State and Federal Government Agencies, Traditional Owners	As required
Website updates	Online portal to provide ongoing project updates, information, and channels to contact the project team.	All stakeholder groups	Updated as required
Fact Sheet	Informative bulletin to outline the project location, concept design and DMRP development process.	All stakeholder groups	n/a
Industry events	Unstructured public events to introduce the project team, share project information and updates, and capture feedback	Gippsland community	ENGIE Hazelwood participated in The Mine Land Rehabilitation Authority 'Declared Mine Rehabilitation Plan and Key Legislation Information Session' July 2025
Community update	Informative electronic direct mail (EDM) provided to subscribers registered to our e-news subscriber list. Included specific information as to the DMRP process and upcoming opportunities to participate.	All stakeholder groups	Sent June 2025
Phone & email enquiries	Project email launched in 2022 to respond to enquiries and send project updates.	All stakeholder groups	As required

Full outcomes of engagement during this phase are detailed in the ENGIE Hazelwood Consultation Register.

## Phase 2: Formal consultation with identified stakeholders on the draft DMRP

The draft DMRP will be publicly exhibited in July 2025 and will be placed on public display for 60 days before it is formally submitted for assessment. During this time, community members will be encouraged to provide feedback directly to ENGIE Hazelwood as the declared mine licensee.

Following the release and exhibition of the draft DMRP, ENGIE Hazelwood will initiate additional consultation measures to ensure both identified key stakeholders and the broader public have genuine opportunities to contribute to and participate in the planning and development of the DMRP.

Regulations relating to this phase of a DMRP's development include:

Licensees are required to consult formally on a draft DMRP with stakeholders identified in the stakeholder engagement plan, which must include at least prescribed persons and classes of persons listed in regulation 64G and the community.

As part of formal consultation, licensees are required to publish a notice seeking submissions on a draft DMRP at least 60 days before submitting the DMRP for approval.

*Table 7 Key engagement tactics - Phase 2 consultation*

Engagement method	Description	Target stakeholders	Frequency
Advertisement (public notice)	ENGIE Hazelwood will place paid promotions in the Latrobe Valley Express and the Age to promote formal Exhibition of the DMRP review and submission process to a broad audience across Gippsland	Gippsland communities	Released July 2025
Website updates	A dedicated DMRP Project page will be launched to provide ongoing project updates, information, and direct access to DMRP Plan documentation. Interactive channels will also be included for stakeholders to contact the project team or lodge a submission.	All stakeholder groups	Released July 2025
Fact Sheet	Informative bulletin to outline the project location, concept design and DMRP development process.	All stakeholder groups	Released July 2025
DMRP Summary document	A user-friendly summary of the DMRP providing context, details of the concept design, key site features and risks assessed	All stakeholder groups	Available from July 2025
Informal meetings	Opportunities for initial introductions and to encourage open dialogue and discussion	Neighbours, community groups	As required
Formal briefings	Structured meeting opportunities, usually with a set agenda, to provide a specific briefing, update on the Project and seek feedback on key elements of the plan.	Rehabilitation Authority,	As required

		Ministers, Responsible authorities, State and Federal Government Agencies, Traditional Owners	
Site tours for groups	Onsite briefings provide an opportunity for neighbours and key stakeholders to meet with the project team to express concerns, provide feedback and receive updates	All stakeholder groups	As required
Letters	Dedicated correspondence to share project updates, news and offer personal briefings.	All stakeholder groups	As required
Presentation packs	Detailed explanatory information packs to support project briefings and meetings	Rehabilitation Authority, Ministers, Responsible authorities, State and Federal Government Agencies, Traditional Owners	As required
Webinar	Online public explainer event to provide clear and transparent details on the draft DMRP, concept plan and ongoing approach to site management and monitoring.	All stakeholder groups	As required
Submission survey	An online short survey available for shorter form submissions, comments and inputs to the Draft DMRP	All stakeholder groups	Available online from July 2025
Drop in sessions, industry events	Unstructured public events to introduce the project team, share project information and updates, and capture feedback relevant to the DMRP	Gippsland communities	June 2025 and then as required
Written submissions	Formal channel to receive public feedback and input into the Draft DMRP available online and via mail	All stakeholder groups	Available from July 2025
Phone & email enquiries	Continuation of these key channels for takeholder feedback, questions, and lodgement of submissions	All stakeholder groups	Ongoing

Consultation report	<p>At the time ENGIE Hazelwood submits the Final DMRP for approval, it will produce a Consultations Report, setting out</p> <ul style="list-style-type: none"> <li>• consultations undertaken under section 84AZU(4) of the MRSD Act,</li> <li>• matters raised within these consultations, along with ENGIE Hazelwood's response to those matters; and</li> <li>• copies of any written submissions received by ENGIE Hazelwood during the public consultation period.</li> </ul>	All stakeholder groups	October 2025
---------------------	--	------------------------	--------------

### Phase 3: DRMP communications – informing stakeholders about how rehabilitation works are being monitored and managed during rehabilitation and mine closure

Following approval of the DMRP, a separate plan will be developed to set out forward communications and engagement activities that will keep key stakeholders and local communities informed about how ENGIE Hazelwood is monitoring and managing potential impacts, and protecting important natural systems during the next phase of site rehabilitation works.

This plan will include communications activities that will be delivered to ensure community and stakeholders are informed about how ENGIE Hazelwood is competently monitoring and managing site rehabilitation and environmental performance in:

- Water and ground movement management
- Delivery of rehabilitation actions and milestones to meet closure criteria.
- Delivery of environmental objectives and compliance with performance criteria.
- Incident and emergency management actions, incidents and management.
- Enquiries and complaints management.

The plan will also detail the reporting methods and channels ENGIE Hazelwood will use to inform key stakeholders about the status and safety of the rehabilitation project and share important information at the time of mine licence relinquishment.

The approach of engagement during this phase will be to build confidence that environmental impacts are being monitored and managed through regular reporting and stakeholder interactions, including through:

- A timeline explaining the rehabilitation program and activities
- Clear explanations of the monitoring tools being used based on scientific evidence and environmental compliance parameters
- Corrective actions taken, as required
- Opportunities for key stakeholders to be updated and have their questions answered
- Development of key messages in preparation for press enquiry
- Promoting the future vision for the area

Potential tools and engagement tactics that will be used during this phase will include:



- Website: general program content and a rehabilitation progress dashboard
- Factsheets: environmental monitoring methods
- Briefings: periodical briefings with key stakeholders (prescribed authorities), inc. EPA reporting touchpoints
- Annual report: available to Government and Local Council stakeholders
- Webinar: continuation of online informative sessions to provide timely, transparent updates on the rehabilitation process
- Face to face meetings: options to meet and discuss progress with neighbouring landowners as requested
- Press briefings and advertising: potential to provide information to Gippsland communities via local print media
- Enquiries management process

## **9. Timings**

A detailed communications plan will be developed following approval of the DMRP and will align with the mine rehabilitation works program.

## **10. Monitoring feedback**

A dedicated community engagement database (Consultation Manager) was established at the beginning of project feasibility. The details of each community and stakeholder member or group have been captured in this database and subsequent interactions during DRMP engagement will be recorded as a means of tracking and evaluating stakeholder feedback on phases 1-3 of this plan.



## Appendix A – Stakeholder Register

Stakeholder	Likely interests	IAP2 level of engagement
<b>Government – elected</b>		
Treasurer of Victoria Minister for Energy and Resources, Victoria Minister for the Environment, Victoria Minister for Planning, Victoria Minister for Water, Victoria Federal Member for Gippsland	<ul style="list-style-type: none"> <li>Understanding project rationale and benefits</li> <li>Impacts and sentiment of constituents</li> <li>Project timing</li> <li>Community consultation process</li> </ul>	Inform
State Member for Morwell		
Upper House members based in Latrobe Valley		
Elected Members for Morwell, Gippsland, Eastern Victoria and South Gippsland		
Latrobe City Council Mayor and councillors		
<b>Government agencies and authorities</b>		
Department of Transport and Planning	<ul style="list-style-type: none"> <li>DMRP process complies with applicable legislation and requirements</li> <li>Involvement in project development and assessment</li> <li>Optimal outcomes for environment and community</li> <li>Conformance with DMRP preparation Requirements</li> <li>Broader regulatory requirements for mine site rehabilitation (including under existing approvals)</li> <li>Community and stakeholder consultation</li> <li>Management of Crown Land and infrastructure benefiting local communities (e.g. Morwell Main Drain (MMD))</li> </ul>	Collaborate
Department of Energy, Environment and Climate Action		
Department of Jobs, Skills, Industry and Regions		
Parks Victoria		
First Peoples- State Relations		
Mine Land Rehabilitation Authority		
Latrobe Valley Authority		

Stakeholder	Likely interests	IAP2 level of engagement
Earth Resources Regulation Environment Protection Authority Victoria WorkSafe East Gippsland CMA Department Health Heritage Victoria West Gippsland Catchment Management Authority Victorian Environmental Water Holder Department of Transport		
<b>Local government</b>		
Latrobe City Council Wellington Shire Council East Gippsland Shire Council	<ul style="list-style-type: none"> <li>• Understanding project rationale and benefits</li> <li>• Understanding and avoiding / minimising adverse impacts on council land and assets, local environment and local residents &amp; businesses</li> <li>• Opportunities to provide input to project planning and delivery</li> <li>• Opportunities to regenerate or transition local industries, businesses and the economy</li> <li>• Community consultation process</li> <li>• Infrastructure benefiting local communities (e.g. MMD)</li> </ul>	Collaborate
<b>Traditional Owners</b>		
Gunaikurnai Land & Waters Aboriginal Corporation (GLaWAC)	<ul style="list-style-type: none"> <li>• Understanding cultural values in Hazelwood site and surrounds</li> <li>• Understanding project rationale and benefits</li> <li>• Understanding and avoiding / minimising potential adverse impacts</li> <li>• Water resource use from a regional perspective</li> <li>• Opportunities to provide input to project planning, delivery, and land use</li> <li>• Minimising impacts to Native Title land</li> <li>• Development and implementation of Cultural Heritage Management Plan</li> <li>• Optimal outcomes for Country including natural environment</li> </ul>	Collaborate

Stakeholder	Likely interests	IAP2 level of engagement
	<ul style="list-style-type: none"> <li>Opportunities for First Peoples businesses and employment</li> </ul>	

Stakeholder	Likely interests	IAP2 level of engagement
Industry, tourism and business		
Onsite asset owners	<ul style="list-style-type: none"><li>Ongoing operation and maintenance of onsite assets</li></ul>	Inform
Other Latrobe Valley Mine operators	<ul style="list-style-type: none"><li>Understanding project rationale and benefits</li><li>Understanding potential impacts from project in the local area</li><li>Ability to provide local knowledge to enhance the project and delivery and to help avoid/minimise impacts</li><li>Opportunities to provide input to the project and land use</li><li>Clear information and updates about the project</li><li>Maximising local benefits from the project</li><li>Opportunities for local businesses and employment</li></ul>	
Chambers of Commerce		
Committee for Gippsland		
Destination Gippsland		
GROW (Growing Regional Opportunity for Work) Gippsland		
Victorian Farmers Federation		
Morwell and Latrobe Valley businesses		
Gippsland businesses		
Education providers	<ul style="list-style-type: none"><li>Training and skills required for local jobs</li><li>Opportunities for local employment</li></ul>	
Local community:		
Morwell residents and property owners surrounding Hazelwood	<ul style="list-style-type: none"><li>Understanding project rationale and benefits</li><li>Understanding potential impacts from project in the local area</li><li>Maximising local benefits from the project for the long term</li><li>Clear information and updates about the project</li></ul>	Inform, Involve
Gippsland communities		
Young people		
Latrobe River Irrigators Gippsland Environment Group Gippsland Agricultural Group East Gippsland Landcare Network Lower Latrobe Landcare Network	<ul style="list-style-type: none"><li>Understanding project rationale and benefits</li><li>Understanding potential impacts from project</li><li>Ability to provide local knowledge to enhance the project and delivery and to help avoid/minimise impacts</li><li>Opportunities to provide input to the project and future land use</li><li>Clear information and updates about the project</li><li>Maximising local benefits from the project</li><li>Optimal outcomes for environment</li></ul>	Involve

Stakeholder	Likely interests	IAP2 level of engagement
	<ul style="list-style-type: none"><li>Optimal outcomes for local health</li><li>Community safety and amenity</li></ul>	
Emergency services		
Fire Rescue Victoria	<ul style="list-style-type: none"><li>Understanding project rationale and benefits</li><li>Fire risk management and mitigation</li><li>Impacts to services and operation during rehabilitation</li><li>Public safety</li><li>Compliance and conformance with relevant legislation</li></ul>	Inform
Ambulance Victoria		
Victoria Police		
Emergency Management Victoria		
Civil Aviation Safety Authority (CASA)		
Water retailers		
Southern Rural Water	<ul style="list-style-type: none"><li>Understanding project rationale and benefits</li><li>Impacts to services and operation during rehabilitation</li><li>Involvement in decisions which may affect land, water, licence and/or assets</li><li>Minimising impacts on land, water, licence and/or assets</li></ul>	Involve
Gippsland Water		
Media		
Gippsland media - Latrobe Valley, Central Gippsland, East Gippsland	<ul style="list-style-type: none"><li>Clear information and updates about the project</li><li>Involvement in key milestone media opportunities</li></ul>	Inform
Victorian media		
National media		