



Australian Government

**BUILDING OUR FUTURE**



Transport for NSW

# M12 Motorway

Community update | March 2021



M12 over Elizabeth Drive and M7 (artist impression subject to change)

The Australian and NSW Governments are proposing to build the M12 Motorway to connect the future Western Sydney International Airport with the M7 Motorway at Cecil Hills and The Northern Road at Luddenham.

The M12 Motorway will be a dual-carriageway motorway with two lanes in each direction with capacity for future widening to three lanes.

The current design reflects changes in response to community feedback received during the respective environmental display periods.

Since the display of the Environmental Impact Statement (EIS) in 2019 and the Amendment Report in 2020, the M12 Motorway has progressed to detailed design.

## Issues raised during the Amendment Report display

During the display of the Amendment Report to the EIS in late 2020, forty one submissions were received, categorised and reviewed.

The main issues raised during consultation were:

- The design of the M12 Motorway and connections to Elizabeth Drive and the airport
- Social economic impacts including property access and value and business impacts.
- Noise and vibration impacts, relating to future land use, traffic growth and noise mitigation
- Transport for NSW's consultation with the community.

## Design changes since the EIS and Amendment Report

We have made a number of key design changes to the project, in response to feedback throughout the EIS consultation process, that started in late 2019.

- The Australian and NSW Governments have committed further funding to the project create the new connections between the M12 and

Elizabeth Drive near the M7, as displayed in the EIS Amendment Report (if approved).

- Traffic lights instead of a roundabout (as displayed in the amendment report) at the intersection of the realigned Wallgrove Road/Cecil Road to address traffic growth expectations, land use planning and community issues

Additional design changes developed since the Amendment Report, which are subject to further environmental assessment include:

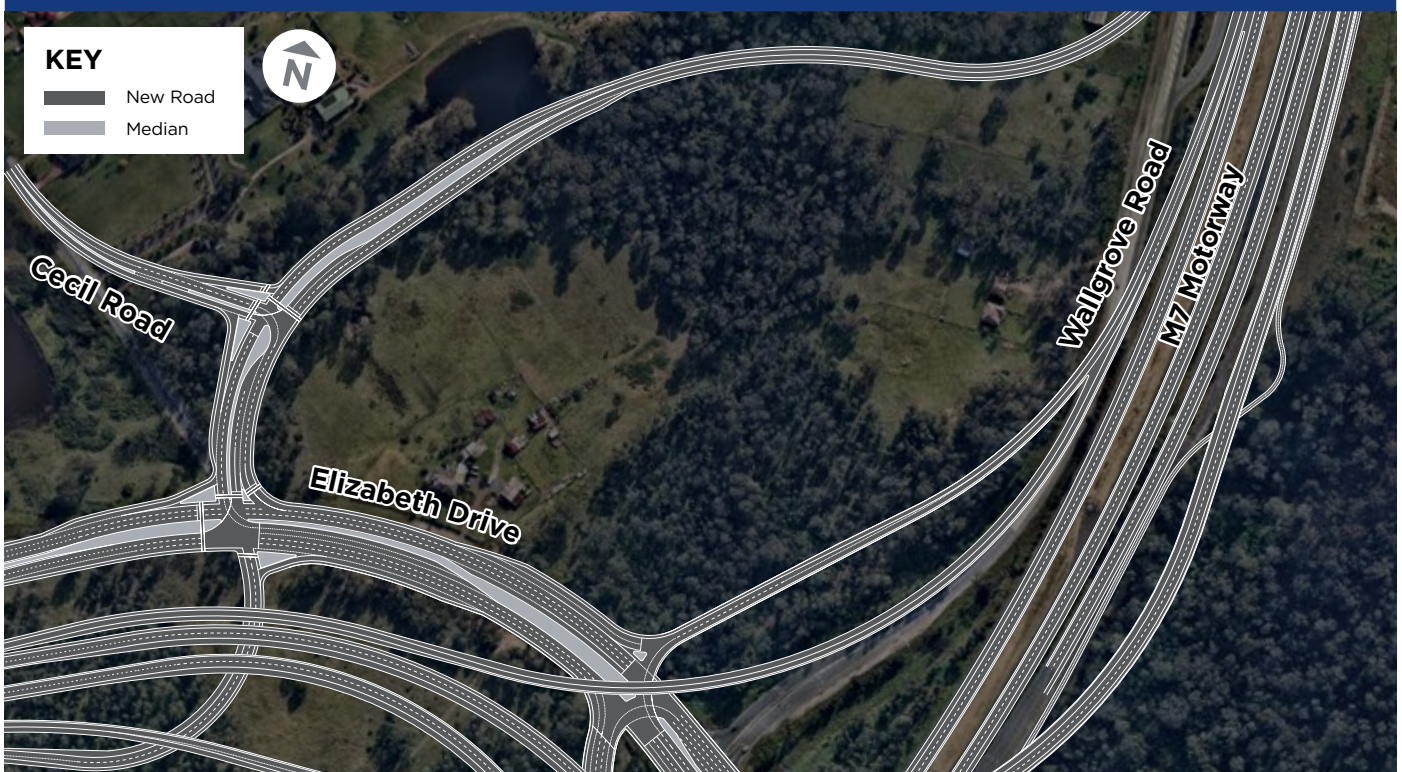
- A revised interchange design between the M12 Motorway and the airport access road
- An interchange between Elizabeth Drive and the M12 Motorway at the airport entry to improve connectivity between the M12 and Elizabeth Drive. The interchange would provide direct access into the airport main access road from Elizabeth Drive.

## Connecting the M12 with Elizabeth Drive

During consultation on the EIS, we listened to community and stakeholder feedback around being able to connect between the M12 Motorway, Elizabeth Drive and the Airport.

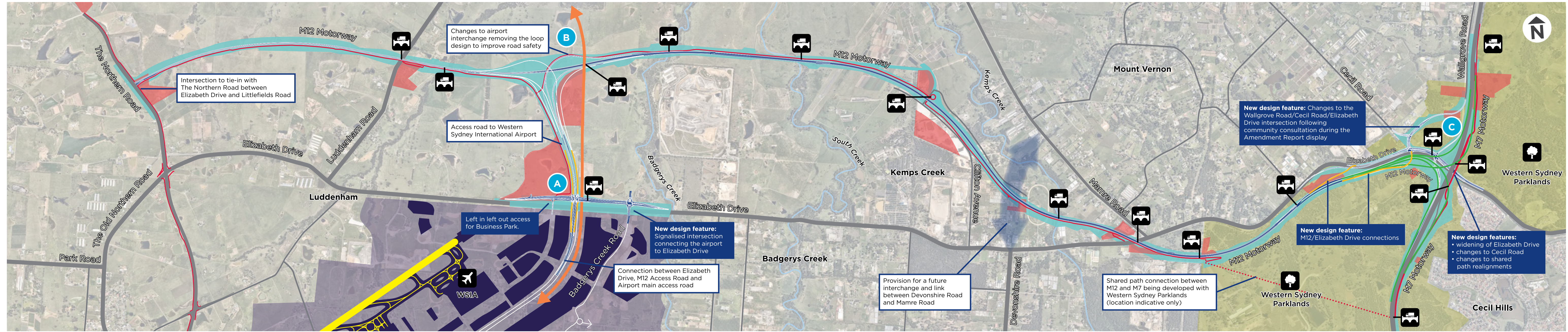
In response to this feedback we have now updated the project design. The project will now include a key connection between the M12 Motorway and Elizabeth Drive at the eastern end of the M12 Motorway near Wallgrove Road and the M7 Motorway.

These new connections will enhance local access to the M12 Motorway and the Airport and improve journeys in the area.



Elizabeth Drive/M12 (subject to change in detailed design)

# M12 Motorway - current design



KEY	
	M12 Motorway
	Western Sydney International Airport (WSIA)
	Compound or storage site
	Land re-zoned permanently as Motorway
	Shared path
	M12/Elizabeth Drive connections
	M7/M12 connection (subject to unsolicited proposal to widen the M7)
	Bridges
	Sydney Metro - Western Sydney Airport



M12 Motorway/Airport interchange (Artist impression, subject to change in detailed design and planning approval)



Elizabeth Drive/Airport Access Road (Artist impression, subject to change in detailed design and planning approval)



M7 Motorway/M12 Motorway/Elizabeth Drive interchange (Artist impression, subject to change in detailed design and planning approval)

## M12 Motorway Thematic Study now online

A thematic study is an analysis of a place in relation to evidence of change and development, its inhabitants and features, as well as its economic, cultural and social structure and makeup.

The M12 project has an Aboriginal cultural heritage interpretation strategy, to acknowledge the area's Aboriginal history and the Aboriginal connection to the area today.

In addition to this, the project has carried out a thematic study of non-Aboriginal heritage values along the M12 Motorway corridor, focusing on the cultural environment in the post-colonial era.

The thematic study will be used to help guide the heritage interpretation strategy and plan for the project. The area is rich in postcolonial history, including:

- Fleurs Radio Telescope Site, which for a time was the CSIRO's leading Radio Astronomy field station in Australia
- the World War Two Fleurs Aerodrome
- the State heritage listed Upper Canal System (built in 1888).

The full thematic study is now available to read on the M12 Motorway's online portal.



Geotechnical investigations near South Creek



Construction of the new Wylde Mountain Bike Trail is underway



The heritage listed Upper Canal - Image courtesy of WaterNSW



The parabolic dish at Fleurs Farm

## Next steps



## What is happening now?

The Department of Planning, Industry and Environment (DPIE) and the Commonwealth Department of Agriculture, Water and the Environment (DAWE) are now considering Transport's response to submissions and assessing the project for a recommendation to their respective Ministers.

The NSW Minister for Planning and Public Spaces and the Commonwealth Minister for Environment will then decide whether or not to approve the project and if so, identify any conditions of approval that would apply.

DPIE is expected to inform Transport of the decision in mid-2021.

## For more information

If you have any enquiries, feedback or concerns, or would like to sign up for our emailing list, please:

 1800 517 155

 [m12motorway@transport.nsw.gov.au](mailto:m12motorway@transport.nsw.gov.au)

 [rms.nsw/m12](https://rms.nsw/m12)



This document contains important information about road projects in your area. If you require the services of an interpreter, please contact the Translating and Interpreting Service

on 131 450 and ask them to call the project team on 1800 517 155. The interpreter will then assist you with translation.



View from Elizabeth Drive looking north toward M12

March 2021  
21.032



Privacy Transport for NSW ("TfNSW") is subject to the Privacy and Personal Information Protection Act 1998 ("PPIP Act") which requires that we comply with the Information Privacy Principles set out in the PPIP Act. All information in correspondence is collected for the sole purpose of assisting in the delivery of this project. The information received, including names and addresses of respondents, may be published in subsequent documents unless a clear indication is given in the correspondence that all or part of that information is not to be published. Otherwise Transport for NSW will only disclose your personal information, without your consent, if authorised by the law. Your personal information will be held by Transport for NSW at 27 Argyle Street, Parramatta NSW 2150. You have the right to access and correct the information if you believe that it is incorrect.