

Sydney Gateway

May 2023
Project Update

Sydney Gateway will provide a new, toll-free connection from St Peters Interchange to improve journey times to Sydney Airport, the M5 and Eastern Distributor.

Since our last update, we have achieved a number of milestones on Sydney Gateway, including:

- Installing large girders in the Flyover over the O’Riordan and Sir Reginald Ansett Drive intersection
- Lifting both of our arches in vertical position as part of our Twin Arch Bridges in Tempe
- Installing our first pair of steel girders over the Alexandra Canal for the bridge that will bring traffic to and from the Domestic Terminals.

Over the next three months, more changes will be visible on the Project. Near Domestic, we will install the final girders over the Robey Street intersection, completing the final piece in this 800 metre long structure. The northbound Twin Arch Bridge will be launched over the Alexandra Canal. The bridge girders over Canal Road that will join Sydney Gateway with WestConnex at St Peters Interchange will be installed. Other work includes asphaltting the road surfaces, installation of barriers, medians and road furniture such as lighting and signage.



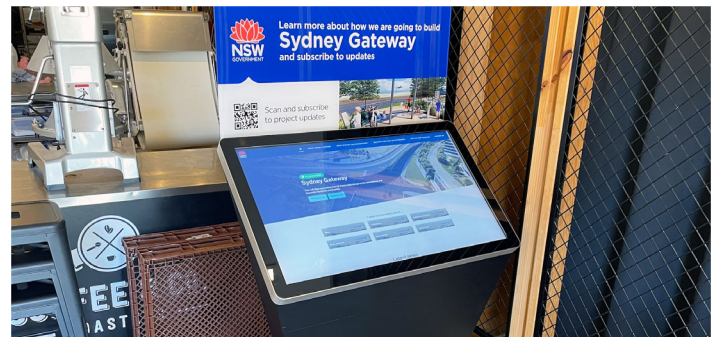
Continuing girder installation on Qantas Drive, Mascot.

Sydney Gateway Kiosk

Just a reminder we have our digital Kiosk available at the **Clock On/Off Cafe** for our Tempe community.

Functions on the Kiosk include our Interactive 3D Map where you can explore Sydney Gateway as well as connecting to our website to read up on our latest work.

Clock On/Off Cafe is located at **880 Princes Highway, Tempe** in Sydney’s Inner West.



Check out our Interactive Kiosk at Clock On/Off Cafe, Tempe.

What is in this update?

In this Project Update you’ll find more information on:

- What’s happening onsite?
- Sydney Gateway and the community.
- Recycled materials paving a new way forward.
- What’s happening next on Sydney Gateway?

If you would like to stay up to date and learn more about our upcoming works, scan the QR code and register for email updates.



What's happening onsite?

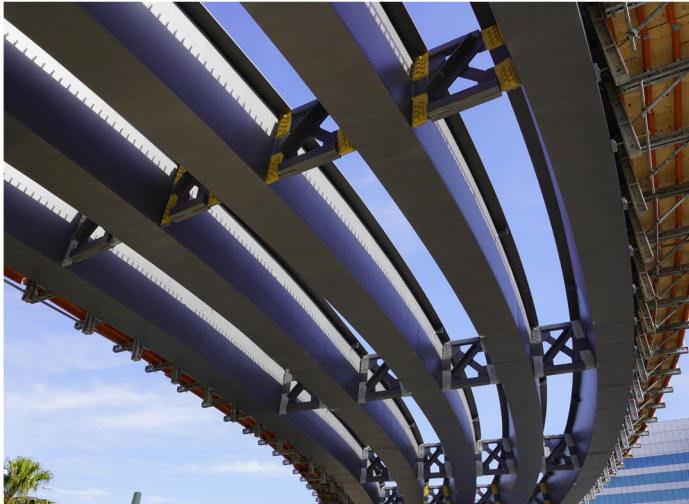
Mascot

The Sydney Gateway Flyover has reached yet another major milestone with the successful installation of the steel girders across Qantas Drive in Mascot. The five, 100% Australian Steel curved girders that connect the piers on Qantas Drive and Sir Reginald Ansett Drive, are approximately 55 meters long and each weigh about 90 tonnes.

In early May, we will repeat this activity with the installation of steel girders at the Robey Street and Seventh Avenue intersection. Detours around the Qantas Drive worksite will be required to allow us to install these girders. Slowly, the gaps between the piers are being linked to form the Flyover structure. Once the Flyover is completed and opened to traffic, Qantas Drive eastbound motorists will use the Flyover instead of turning right into Sir Reginald Ansett Drive to enter the Domestic Terminals.

Qantas Drive eastbound road widening work was completed in March and the construction team will now move activities closer to the Robey Street intersection to widen the road at this location. Qantas Drive westbound road widening activities are expected to finish by early June.

There are ongoing underground services being installed and relocated along Qantas Drive. Motorists travelling on Qantas Drive may notice works near Robey and O'Riordan Streets in the coming months.



Curved steel girders lifted into place along Qantas Drive, Mascot.



The start of the Flyover ramp continuing to take shape in the middle of Qantas Drive, Mascot.



Work continuing on the Departures ramp over Sir Reginald Ansett Drive, Mascot.



Girder installation on Qantas Drive, Mascot.

Tempe

We now have both Arches of the first northbound bridge standing upright at our Tempe site. The team is working hard to complete installation of floor beams between these two Arches prior to it being launched over the Alexandra Canal in the coming months. This work may include out-of-hours welding and grinding.

The steel launch nose that will be temporarily attached to the front of this bridge, to facilitate the launch, is also being assembled at the Tempe site.

Within Tempe lands, we have started laying asphalt on the new road surface prior to installing street furniture such as lighting and signage.

In coming weeks, the team working on the bridge over the Botany Rail Freight Line will have completed installation of the bridge ready for its final surfacing.



Workers assembling the Twin Arch Bridges at Tempe.



Twin Arch Bridge with its teal coloured temporary struts in place.



The steel launch nose temporarily attached to the front of the Twin Arch Bridge to facilitate the launch.



Scan the QR code to watch how the Twin Arch Bridge will be launched.



St Peters

The Northern Lands team in St Peters is continuing construction of bridge structures and roads within the site. The team is about to reach a major milestone when it installs the bridge girders over Canal Road. This will form the connection between Sydney Gateway and WestConnex at the St Peters Interchange.

Within the site, the road that is carried over the Canal Road bridge is taking shape with an asphalt surface being laid.



Asphalting work has begun on the Project.



Ongoing bridge construction in St Peters.



View from St Peters Interchange of our Northern Lands site.

Out in the community

International Women's Day 2023

Sydney Gateway invited its full team to celebrate International Women's Day (IWD) on Wednesday March 8, with the theme #EmbraceEquity.

We celebrated IWD with a prestart BBQ breakfast across our worksites, followed by a morning tea at our Mascot office.

Our guest speaker, Salianne Faulkner from the Bayside Women's Shelter, discussed the purpose of the Shelter and also thanked the project for its Christmas Toy Drive contributions and our ongoing support.

The morning tea at the Mascot office featured a short talk by the John Holland Seymour Whyte Joint Venture (JHSW JV) Project Director outlining the initiatives and outcomes we have in place at Sydney Gateway to support women in construction.

We also held a gold coin donation for the Bayside Women's Shelter as part of our celebrations of IWD raising over \$1,800.

Thank you to everyone for your support and generosity.



Sydney Gateway JHSW JV Project Director Andrew Deck with Salianne Faulkner from the Bayside Women's Shelter.



Prestart BBQ breakfast at our worksite.

What is International Women's Day?

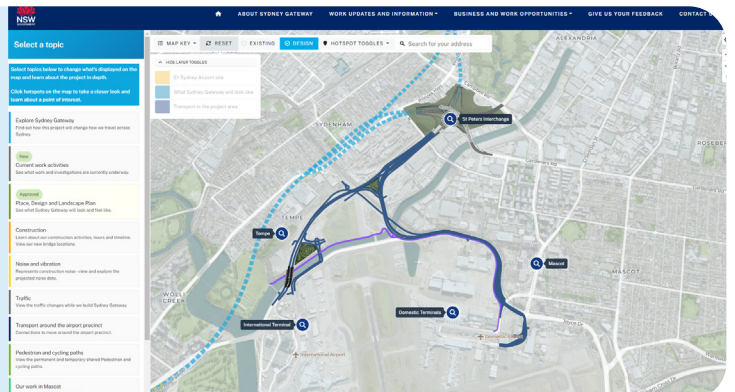
Held annually, International Women's Day is a global day celebrating the social, economic, cultural, political achievements and contributions of women.

Our teams joined to acknowledge International Women's Day to recognise women working on construction sites and in offices across Tempe and Mascot.



Sydney Gateway's Toy Drive for the Bayside Women's Shelter.

Scan the QR code to view our current work activities on our interactive map



Recycled materials paving a new way forward

Australia produces about **76 million tonnes of construction and demolition waste each year**, but have you ever wondered where it all goes?

During the construction process, significant amounts of construction waste, known as spoil, are being generated from the excavation of the site. Rather than being transported offsite to a landfill or other disposal facility, this spoil is being reused in various ways to reduce the environmental impact of the project and save on costs.

One of the main uses of construction spoil on the Sydney Gateway project is to create the embankments for the new road network. The spoil is being compacted and shaped to create a stable base for the road surface to be laid on top of. This helps to reduce the amount of new materials that need to be brought onto the site, reducing the environmental impact of the project.

Recovered topsoil from pre-existing areas is also being used to create new landscaping features, such as plantings, to help improve the visual appeal of the area surrounding the new road network. Additionally, some of the construction spoil is being reused to create noise mounds and other structures to help mitigate the

impact of the increased traffic on nearby residents and businesses.

Overall, the use of construction spoil on the Sydney Gateway project is an important example of sustainable construction practices in action. By reusing this material on site, the project is reducing its environmental impact and creating a more sustainable infrastructure network for the future.



What's happening next on Sydney Gateway?

In coming months, we will start fixing architectural screens featuring indigenous designs along the Flyover, as well as installing large signage structures and gantries on both Qantas Drive and the Flyover which will guide motorists to the Domestic Terminals, neighbouring suburbs and beyond.

At Tempe, we will start out-of-hours steel deliveries and assembly of the two Arches for the southbound Twin Arch Bridge. On Airport and Qantas Drive, two more pairs of girders will be installed on the bridge over Alexandra Canal at Mascot. The bridge that carries the pedestrian and cycle path over the Canal to the east of Nigel Love bridge will also be installed in coming months. This will mean several more overnight closures of the pedestrian and cycle path between Tempe Reserve and Coward Street while these bridge girders are installed over the Alexandra Canal.

During overnight path closures, the Project runs an on-demand shuttle bus to help path users reach their destination. Dates of each path closure are communicated to path users 10 days in advance via large electronic message signs installed at each end of the pedestrian and cycle path. More information about closures is available on the [Project website](#).

At St Peters, once the girders have been installed over Canal Road, the team will begin to install barriers, the bridge surface and road furniture. Expect some further overnight lane closures on Canal Road for some of this work.

Safety is our priority

To keep you and our workers safe, we have footpath, road and lane changes in place whilst we carry out our work. Please plan ahead and follow the direction of traffic controllers and signage.

For enquiries or complaints:

 nswroads.work/SydneyGateway

 1800 654 446 (24/7)

 SydneyGateway@jhs.com.au



Translating and interpreting service

If you need help understanding this information, please contact the Translating and Interpreting Service on **131 450** and ask them to call us on **1800 654 446**.