

Historical Heritage



Cadia has a long history of mining and has been part of the Central West community for the past 25 years. While Cadia is currently approved to continue operations until 2031, we have identified mineral resources for production beyond our current approval.

To continue supporting regional investment, jobs and the national renewable energy transition, Cadia is seeking approval from the NSW and Federal Governments to extend our mining operations beyond 2031. This application is known as the Cadia Continued Operations Project (CCOP/the Project).

OVERVIEW

As part of the planning and approval pathway for the Project, a preliminary assessment for historical heritage has been prepared. This assessment identifies heritage items in the CCOP Project area and how the Project may impact those items, and outlines potential management and mitigation measures to minimise impacts.

The NSW Department of Planning, Housing and Infrastructure has recently issued the Secretary's Environmental Assessment Requirements (SEARs) for the CCOP. The SEARs outline the information that needs to be included in the Environmental Impact Statement (EIS) and will be used to progress and finalise the Historical Heritage assessment for the Project.

The assessment is being prepared in accordance with the [NSW Heritage Guidelines](#).

BEYOND 2031

If approved, CCOP will allow mining to continue for approximately 25 years from the date of approval, providing ongoing job opportunities and other economic and community benefits. Extending our Life of Mine (LOM) beyond 2031 ensures:

ONGOING EMPLOYMENT



for more than

1500 PEOPLE

Over **80%** who live locally in Orange, Blayney and Cabonne

COMMUNITY INVESTMENT



Strong economic and social development including Indigenous, education, fire service training and community projects with a focus on health, agriculture and tourism

ECONOMIC BOOST



Substantial contributions, tax, royalty and rate payments to state and local governments to fund schools, hospitals, roads and police

SUSTAINABILITY



Improved water management and site rehabilitation

HISTORICAL HERITAGE IMPACT ASSESSMENT

A Historical Heritage Impact Assessment (HHIA) must be prepared by an appropriately qualified and experienced heritage professional with expertise relevant to the heritage item.

Umwelt, an Australian environmental and social consultancy with over 30 years' experience, was commissioned by Cadia to prepare the HHIA.

How the assessment is being carried out:

An extensive desktop review of site-specific background information including primary source materials and heritage studies was undertaken to establish a context for the Project area.

A targeted visual site inspection on pastoral properties to the south of the existing mine was undertaken. The inspection enabled Umwelt to gain an understanding of the site, the potential for historical heritage items to be present, potential impacts that may arise and to photograph any key site elements relevant to historical heritage.

An assessment of the significance of built and archaeological heritage.

Consideration of historical archaeological potential (i.e. the likelihood that there may be physical evidence relating to the early development and occupation of the CCOP Project area beneath the current ground surface).

An assessment of the likelihood, extent and nature of any potential impacts to listed (or potential) heritage items in accordance with the Heritage NSW guidelines and the Burra Charter.

Development of management and mitigation measures to ensure that any potential heritage impacts are appropriately managed.

HERITAGE MANAGEMENT AREAS

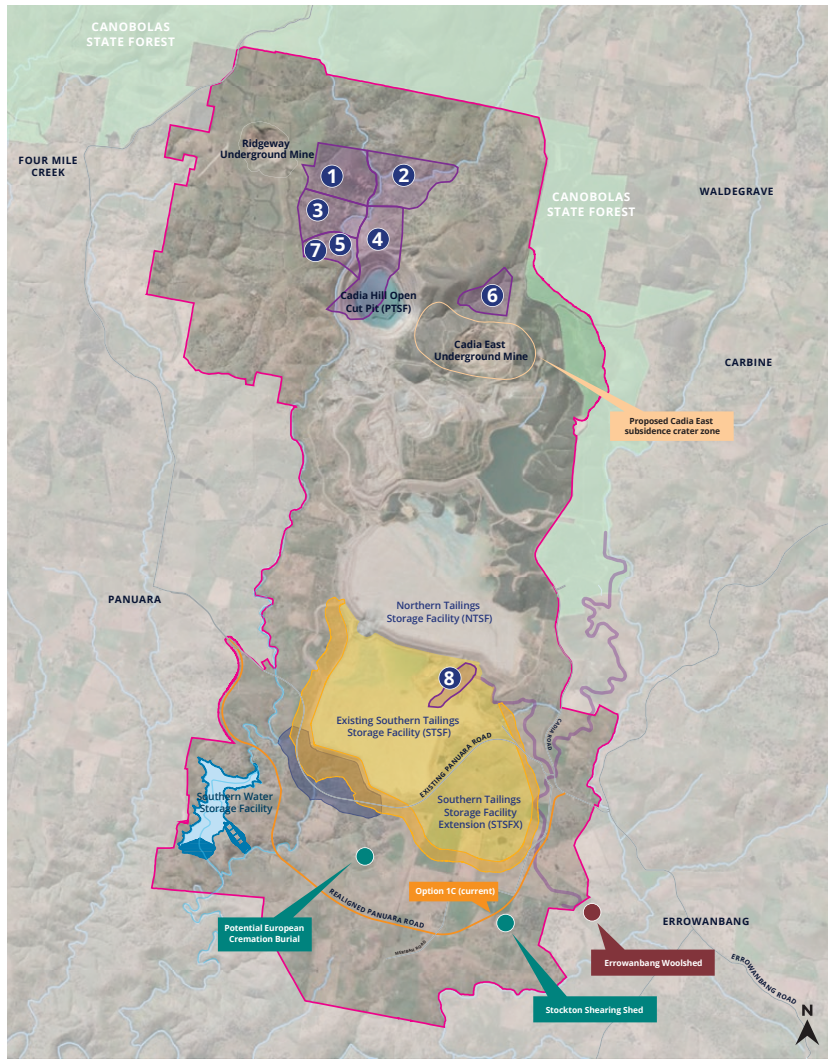
The current *Historical Heritage Management Plan and Conservation Plan* for Cadia identifies eight heritage management areas within the Project area. These eight areas include:

- 1 Iron Duke Precinct
- 2 East Cadia Precinct
- 3 West Cadia Precinct
- 4 Cadia Village Precinct
- 5 Cadia Engine House Precinct
- 6 Little Cadia Precinct
- 7 Cadia General Cemetery (which has been relocated)
- 8 Wire Gully Gold Workings

A number of additional heritage sites within the CCOP study area include the Stockton Shearing Shed and potential cremation burial site.

STATE AND LOCAL HERITAGE LISTINGS

A number of local and state heritage listed items are either within or close to the Project area. It is noted that there are three separate listings associated with the Old Errowanbang Homestead and Woolshed – one state and two local listings – noting all three listings have a different listed boundary.



LEGEND

- CCOP project area
- STSF and STSFX
- STSFX embankment
- STSFX sand stockpile
- Proposed Cadia East subsidence crater zone
- Southern Water Storage Facility including embankment wall and spillway

HERITAGE MANAGEMENT AREAS AND SITES:

- Heritage management areas
- State and local heritage listings
- Heritage items

PROPOSED PANUARA ROAD DESIGN:

- Option 1C (current)

Please note: This map provides an overview of the site context and the Panuara Road Realignment. Supporting infrastructure for the STSFx such as reclaim ponds, perimeter drains and utilities access tracks are not included on this map, but will be included on other Project maps available on the CCOP website.

June 2024

CCOP project area map showing state and local heritage listings.

SITE INSPECTION

A targeted visual site inspection was undertaken on properties located to the south of the existing mine, between Panuara Road, Cadiangullong Creek and the Belubula River. The majority of the listed heritage items and heritage management areas identified within the HHIA are located within the Project area but are not predicted to be impacted.

The inspections identified several structures and features of potential historical significance including:

- Dwellings/dwelling remnants
- Huts
- Machinery, shearing and storage sheds.

One structure (a shearing shed at Stockton) is considered to be of potential heritage significance. As part of the continued HHIA, further investigations and research is being undertaken, particularly in relation to its association with the Old Errowanbang Woolshed.

MANAGEMENT MEASURES

Cadia is committed to ensuring that heritage management measures will be put in place to mitigate any potential impacts. This includes:



Establishment of an Unexpected Finds Protocol in the event that any unexpected historical archaeological remains or structures of potential heritage significance are identified.



Heritage specific inductions for all Project team members and construction contractors to support the use of the Unexpected Finds Protocol prior to any activities being undertaken in the CCOP Project area.



OLD ERROWANBANG WOOLSHED

Cadia is committed to addressing any potential impacts on the State Heritage Registered Old Errowanbang Woolshed. Whilst the preliminary findings from the HHIA have not identified any potential impacts to the Woolshed, a structural assessment will be completed to finalise the assessment process.

Once the structural assessment is complete, we will meet with the landowner and near neighbours to notify them of the assessment outcomes, and discuss how any potential impacts to the Woolshed could be addressed through careful mitigation and management measures.

IMPACT ASSESSMENT

Out of the eight identified Heritage Management Areas within the Project area, only two are expected to be affected by CCOP impacts. These are:

- Little Cadia (located within the predicted subsidence zone)
- Wire Gully Gold Workings and Water Race (located within the proposed area for the Southern Tailings Storage Facility Extension [STSFX]).

All recommended heritage mitigation works for these management areas have already been completed in accordance with Cadia's current approval and no additional works are recommended in these areas.



PANUARA ROAD

As part of the planning and development application process, Cadia is seeking approval to realign a seven kilometre section of Panuara Road. This is because the current alignment of Panuara Road sits within the footprint of the proposed extension to the existing Southern Tailings Storage Facility. The proposed realignment of Panuara Road is a key consideration in the HHIA, in particular:

- Assessing any potential impacts to the Woolshed
- Assessing any potential impacts to the Stockton Shearing Shed.

As part of the project development, the concept design for Panuara Road has been further refined at the eastern end, bringing the proposed realignment further west and closer to the outer southern boundary of the STSFX (as shown on the map on page 2). This seeks to minimise any potential impacts to some historical sites, such as the Stockton Shearing Shed and Old Errowanbang Woolshed. The assessment of any potential impacts to these and any other historical heritage structures and features are continuing, including a structural assessment of the Woolshed due to take place in the coming months. As part of the assessment process, we will work with local community members to determine suitable mitigation, management and/or structural improvement measures. The final Historical Heritage Impact Assessment Report will be shared with community as part of the exhibition of the EIS.

NEXT STEPS

Review the SEARs and identify any additional aspects which will need to be considered within the assessment.

Further research as part of the EIS phase of the project (including additional consultation with local stakeholders) to clarify the association of the Stockton Shearing Shed with Old Errowanbang Woolshed.

Ongoing consultation with stakeholders and the community.

Finalise the Historical Heritage Impact Assessment.



Photo: Stockton. 1920s southern extension, showing the internal window openings in the 1880s structure (at right).

HAVE YOUR SAY

Newmont is continuing to engage with community and stakeholders to gather information and feedback during preparation of the EIS. We welcome and encourage you to have your say on the Project.

Information about upcoming Community Information Sessions, EIS Technical Q&A Forums and other ways you can get involved can be found on the CCOP website: cadiabeyond2031.com.au.

If you would like to schedule a meeting with the CCOP team, please contact us:

 1800 716 864

