

## How to make a submission

The submission process is your opportunity to have your say in the development of Sydney Gateway road project. We are aware of the importance of this project to the community and will consider all submissions received.

You can make submissions about the proposed project under the NSW or Commonwealth road process, or both.

**Hard copies of the EIS and preliminary draft MDP can be viewed at the venues listed below:**

- **Roads and Maritime Services (Head Office)**  
20-44 Ennis Road, Milsons Point NSW 2061
- **Sydney Airport Corporate Office**  
Ground Floor Reception,  
Nigel Love Building, 10 Arrivals Court,  
Sydney International Airport, Mascot NSW 2020
- **Green Square Library**  
355 Botany Road, Zetland NSW 2017
- **Marrickville Library**  
313 Marrickville Road, Marrickville NSW 2204
- **Arncliffe Library**  
11 Firth Street, Arncliffe NSW 2205
- **Bayside Council**  
Rockdale Customer Service Centre  
444-446 Princes Highway, Rockdale NSW 2216
- **Mascot Library**  
2 Hatfield Street, Mascot NSW 2020
- **Eastgardens Public Library**  
Eastgardens Library, Westfield,  
152 Bunnerong Road, Eastgardens NSW 2036
- **City of Sydney Council**  
Town Hall Customer Service Centre, Level 2,  
456 Kent Street, Sydney NSW 2000
- **Inner West Council**  
Petersham Customer Service Centre  
2-14 Fisher Street, Petersham NSW 2049

### EIS

Members of the public can make a submission on the combined document from 20 November to 19 December 2019.

Feedback on the EIS should be made to the DPIE. Submissions must be in writing and can be lodged:

 **online at:**

[www.planningportal.nsw.gov.au/major-projects/projects/on-exhibition](http://www.planningportal.nsw.gov.au/major-projects/projects/on-exhibition)

 **as a letter by post to:**

Sydney Gateway road project submission  
*Attention: Director-Transport Assessments*  
Department of Infrastructure Projects  
Planning and Assessment, Department of  
Planning, Industry and Environment  
Application number SSI-9737  
GPO Box 39, Sydney NSW 2001

### Preliminary Draft MDP

Under the *Commonwealth Airports Act 1996*, the preliminary draft MDP will be placed on public exhibition for a minimum of 60 business days, not including public holidays or the period between Christmas Day and New Year's Day.

Members of the public can make a submission on the combined EIS and preliminary draft MDP from 20 November 2019 to 21 February 2020. Submissions must be in writing and can be lodged:

 **as a letter by post to:**

Sydney Gateway Major Development Plan  
*Attention: Mr Ted Plummer (Special Advisor  
Government and Community Relations)*  
Sydney Airport  
Locked Bag 5000,  
Sydney International Terminal, NSW 2020.

**@ email to:**

[sydneygateway@syd.com.au](mailto:sydneygateway@syd.com.au)

### Interactive portal



We invite you to visit our online interactive portal at [rms.nsw.gov.au/sydneygatewayportal](http://rms.nsw.gov.au/sydneygatewayportal) where you can take a virtual tour of Sydney Gateway, view maps, videos and more.

The online portal also provides links to the chapters and technical papers of the combined EIS and draft MDP, so you can read about the project in more detail before making a submission.

You can also download our *Guide to the combined EIS and preliminary draft MDP*.

### Sydney Gateway EIS and preliminary draft MDP




### Contact the Sydney Gateway team

 [www.rms.nsw.gov.au/sydneygatewayportal](http://www.rms.nsw.gov.au/sydneygatewayportal)

 [rms.nsw.gov.au/sydneygateway](http://rms.nsw.gov.au/sydneygateway)

 [sydneygateway@rms.nsw.gov.au](mailto:sydneygateway@rms.nsw.gov.au)

 1800 654 446

 Sydney Gateway Project,  
Roads and Maritime Services  
Locked Bag 928,  
North Sydney NSW 2059



If you need help understanding this information, please contact the Translating and Interpreting Service on 131 450 and ask them to call us on 1800 654 446.

**Privacy.** Roads and Maritime Services ("we") are collecting your personal information in connection with the Sydney Gateway ("the Project"). In addition to collecting your name and contact details we may collect other information such as your submissions and other communications with us. We will retain and use this information for consultation purposes, including communications and analysis in connection with the Project. We will **not** disclose your personal information to third parties unless authorised by law and if we include your submissions in any public report we will not identify you. Providing your personal information is voluntary but if you do not provide it we may not include you on our stakeholder database and you might miss further consultation opportunities. Your personal information will be held by us and you can contact us to access or correct it. Please write to us at either [sydneygateway@rms.nsw.gov.au](mailto:sydneygateway@rms.nsw.gov.au) or Roads and Maritime Services, Locked bag 928, North Sydney NSW 2059.



# Sydney Gateway

## How to make a submission on the combined Environmental Impact Statement (EIS) and Preliminary Draft Major Development Plan (draft MDP)

**We are moving forward with planning for Sydney Gateway—a new toll-free connection from the Sydney motorway network at St Peters Interchange to Sydney Airport and beyond. It will make journeys from the west and south-west to Sydney Airport, the M5 and the Eastern Distributor easier, faster and safer.**

Thank you for your valuable feedback so far on Sydney Gateway. Your thoughts and suggestions have been very valuable in helping us shape Sydney Gateway's design and support the development of the combined EIS and preliminary draft MDP.

### This fact sheet presents information on:

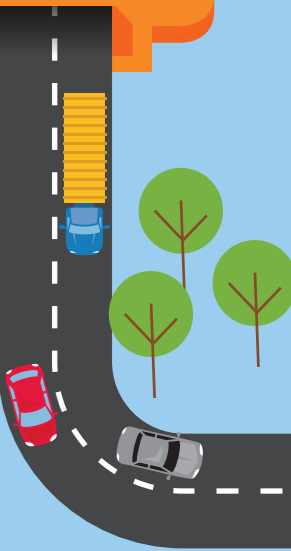
- The two planning processes required for Sydney Gateway
- Display locations
- How you can make a submission to the Department of Planning Industry and Environment (DPIE) and/or Sydney Airport Corporation.



### Interactive portal

Visit our new interactive portal to explore Sydney Gateway, read the combined EIS and preliminary draft MDP or make a submission: [rms.nsw.gov.au/sydneygatewayportal](http://rms.nsw.gov.au/sydneygatewayportal)

Summer 2019/20



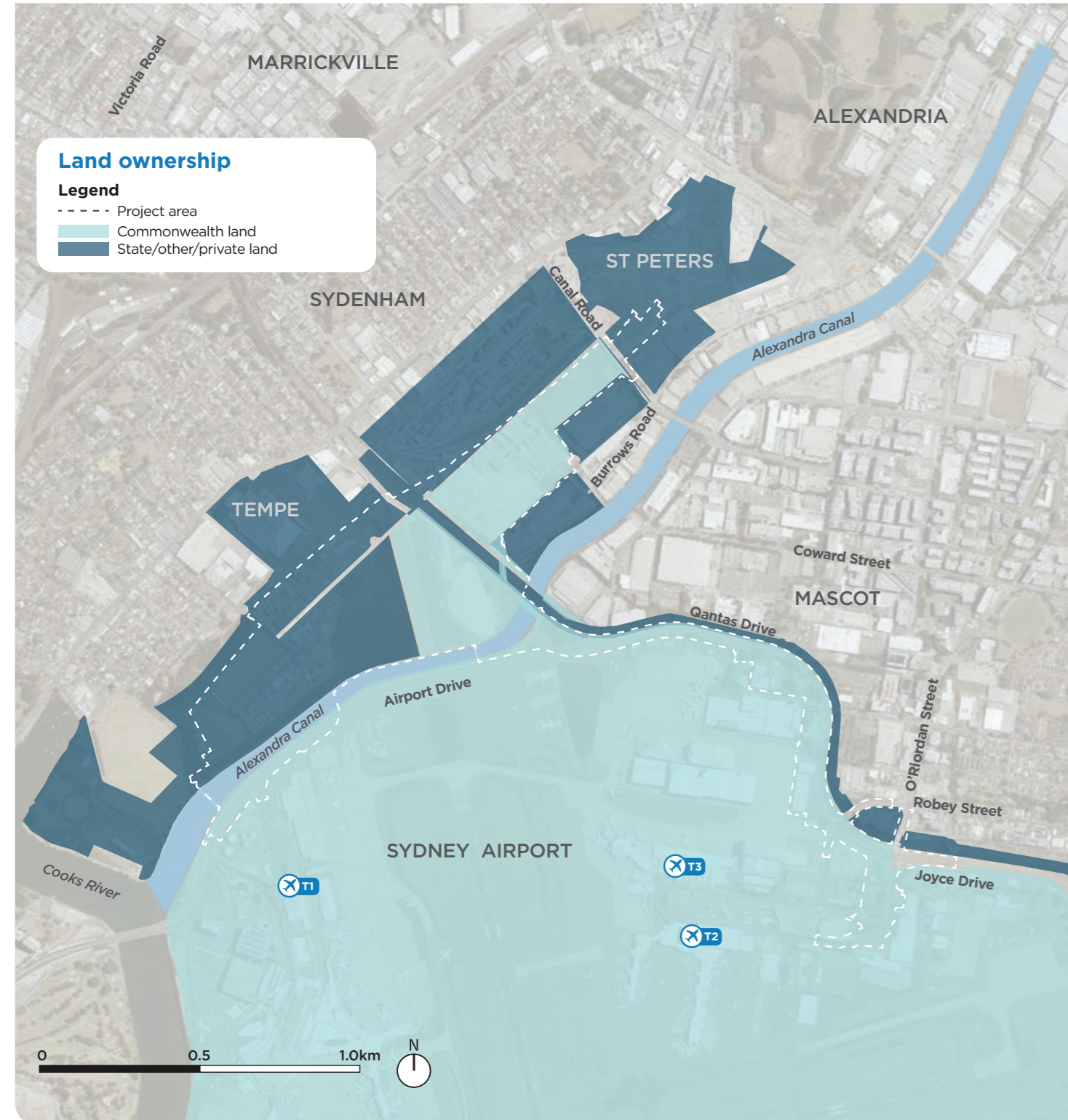
## Background

The Sydney Gateway road project is unlike most other major road projects in NSW as it passes through both Sydney Airport land, owned by the Commonwealth, and State land under the jurisdiction of the NSW Government.

The figure below shows Sydney Airport land and State land within our project area.

Parts of the project on State land are subject to approval under the NSW *Environmental Planning and Assessment Act 1979*.

Parts of the project on Sydney Airport land are subject to approval under the Commonwealth *Airports Act 1996*.



## The project is subject to two planning approval processes

Each planning approval process has different requirements, outlined as follows:

**1**  
**NSW Government, which requires the exhibition of an EIS**



### The NSW process and the EIS

Following the public exhibition, the DPIE will send us a copy of all submissions made by the public, key stakeholders and government.

While all submissions received will be posted on the DPIE website, if requested, the privacy of submitters will be protected by removing names from submissions.

We will respond to any submissions received in accordance with the *Environmental Planning and Assessment Regulation 2000*. If there are any changes made to Sydney Gateway following the exhibition period, these will be documented in a Preferred Infrastructure Report.

**2**  
**Australian Commonwealth, which requires the exhibition of a preliminary draft MDP**

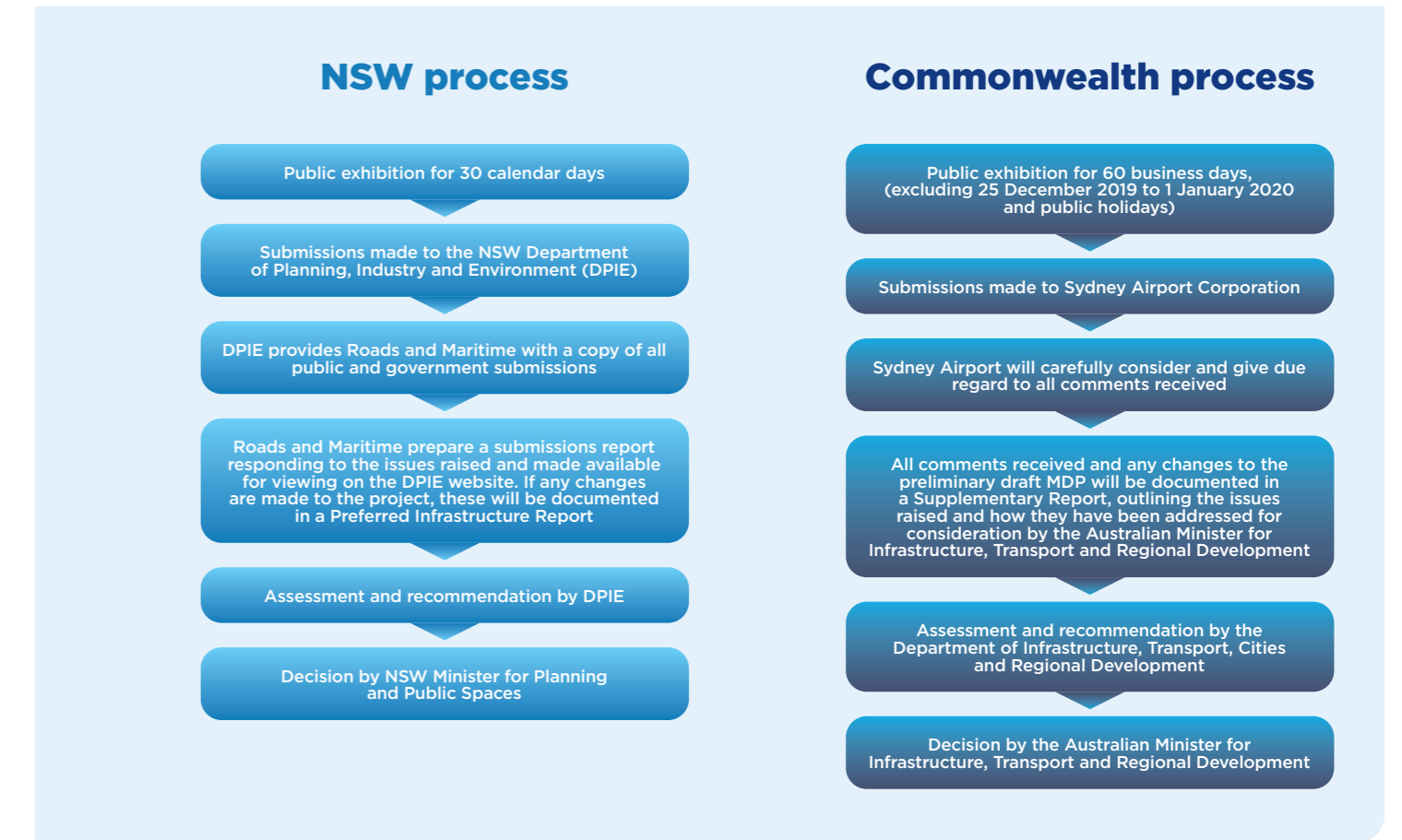


### The Commonwealth process and the preliminary draft MDP

Following the exhibition period, Sydney Airport Corporation will carefully consider and give due regard to submissions received. Roads and Maritime, on behalf of Sydney Airport Corporation, will then prepare a Supplementary Report outlining the issues raised and how they have been addressed for consideration by the Australian Minister for Infrastructure, Transport and Regional Development.

Any changes to the preliminary draft MDP will also be documented in the Supplementary Report. This will be published as part of the final MDP, if approved by the Australian Minister for Infrastructure, Transport and Regional Development.

The diagram over shows the planning processes required for Sydney Gateway to reach final approval to proceed.



Aerial representation of the project