



Modification 15 (Environmental Assessment Findings)

This summary booklet provides an overview of Modification 15 (The Modification), along with a summary of the environmental and social studies that have been undertaken to inform the environmental assessment. This has now been finalised for public exhibition.

WHAT IS MODIFICATION 15?

The key aspects Cadia is seeking approval for are shown in Figure 1 and include:

- To place additional buttressing material on the outer wall of the Tailings Storage Facilities (TSF) and therefore changes to the embankment footprints as shown on Figures 2, 3 and 4
- The restart of the Ridgeway Underground Mine
- A minor realignment of Panuara Road in two locations to accommodate the Southern Tailings Storage Facility (STSF) buttressing footprint
- Additional employment opportunities
- Various changes to existing supporting infrastructure (as well as construction of some new infrastructure), plant, equipment and facilities to further improve the efficacy of the Cadia Valley Operation (Cadia).
- Continued use of existing infrastructure, including the mine infrastructure area, Cadia Dewatering Facility at Blayney, workshops and administrative facilities.

The Modification would not change the following components of the approved Cadia:

- Mining method
- Cadia East Underground Mine and Ridgeway Underground Mine footprint/dimensions
- Approved annual processing rate
- Mine life
- Maximum approved heights of the TSF embankments.



Figure 2: Extent of TSF Buttressing

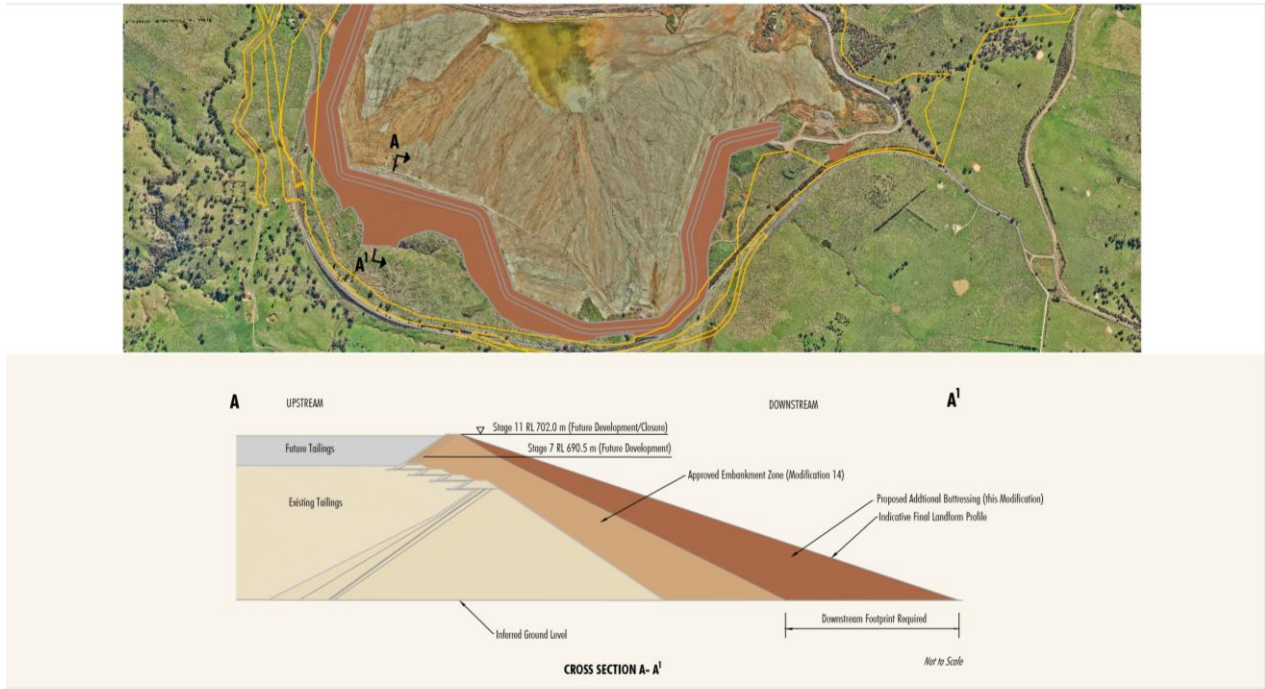


NEC-20-94_100015_MIT_Sep3_20BC

Source: CHPL (2023); ATC Williams (2023)
 Orthophoto: Cadia - Flown November 2023

- LEGEND**
- Mining Lease Boundary
 - Proposed Mining Lease Application Boundary
 - Proposed Panuara Road Realignment (Conceptual)
 - TSF Embankment
 - Internal Bund
 - Tailing Pond

Figure 3: Cross Section Through STSF Buttressing



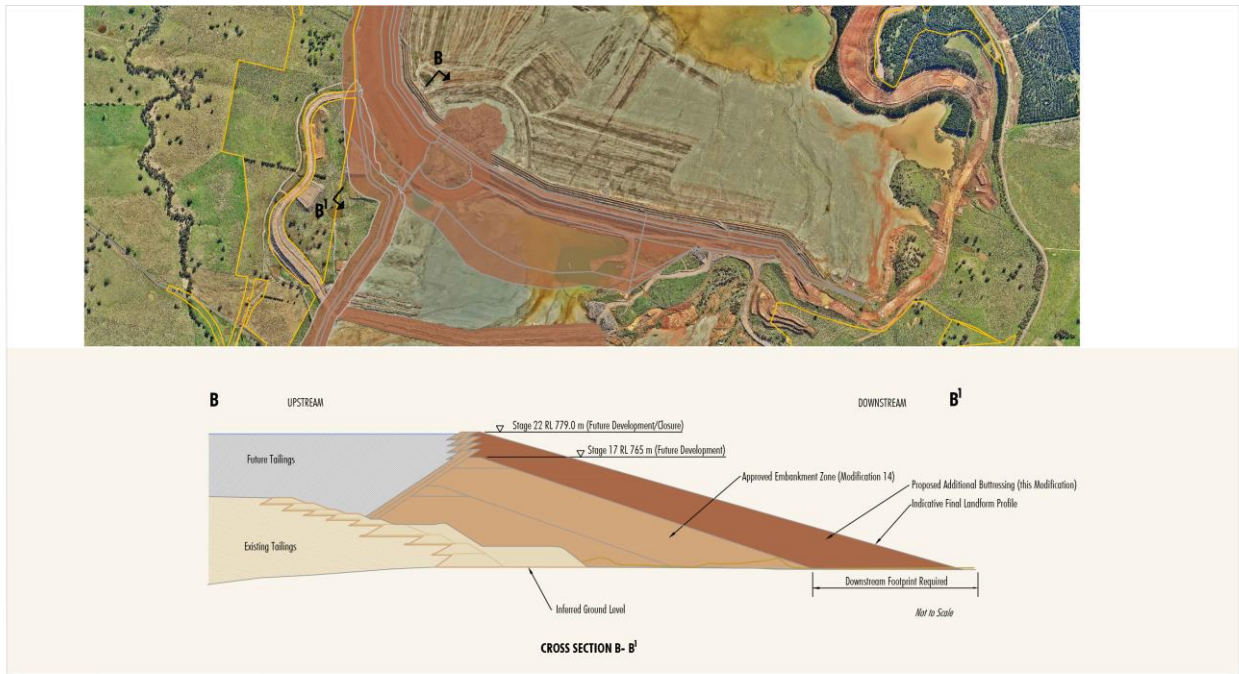
LEGEND

 TSF Embankment
 Modification Disturbance Footprint for Embankment,
 Ridgeway Subsidence and Associated Construction
 and Operational Activities

Source: After CHPL (2020); ATC Williams (2023)

Newmont
 CADIA
 CADIA VALLEY OPERATIONS
 Conceptual Cross Section through the
 Southern Tailings Storage Facility
 Main Embankment

Figure 4: Cross Section Through NTSF Buttressing



LEGEND

 TSF Embankment
 Modification Disturbance Footprint for Embankment,
 Ridgeway Subsidence and Associated Construction
 and Operational Activities

Source: After CHPL (2020); ATC Williams (2023)

Newmont
 CADIA
 CADIA VALLEY OPERATIONS
 Conceptual Cross Section through the
 Northern Tailings Storage Facility
 Main Embankment



Community Consultation Feedback

Consultation with community members commenced at the Cadia District Residents' Meeting on 22 March 2022. Some of the key concerns raised by the community during consultation for Modification 15 include:

- Road transport – disruption to traffic flow from the proposed Panuara Road realignment
- Road transport – potential for interactions between the public road and STSF construction area
- Ridgeway Mine – potential impacts on local groundwater
- Surface ventilation fans – potential noise and air quality emissions
- Biodiversity impacts – potential for additional biodiversity offsets
- Visual – potential lighting impacts from evening construction activities
- Lifestyle change – concerned about the impact the Modification will have on the rural lifestyle and amenity.

The Modification has considered this feedback and made changes to the original proposal shared with the community as part of the preparation of the application.

More recently, the community has raised concerns linked to dust emissions from

current operations, specifically from ventilation shafts and the tailings storage facilities, and the potential health impacts of these emissions. While this concern is related to the current operations at Cadia, the Modification has taken these concerns into account.

The Modification's environmental assessment is supported by various technical studies which have been included as appendices to the main text of the environmental assessment.

We appreciate the time taken by everyone who has participated and provided feedback during consultation undertaken as part of the preparation of the environmental assessment. Through this process, several aspects of The Modification have been refined to reduce impacts on both the community and the environment.

This information will be presented to the community through face-to-face meetings and will also be further communicated at upcoming information sessions. Details regarding the community information sessions were provided via an earlier email update and are also provided at the end of this summary booklet.

Current Approved Operations and the Modification Elements

Below is an overview of what is already permitted as part of Cadia's Project Approval and the changes associated with the Modification

Project Component	Current Cadia Project Approval	Proposed
Mining Methods	<p>Cadia Hill - conventional open pit mining methods (mining now completed).</p> <p>Ridgeway - underground sub-level and block caving with development of associated surface subsidence zone.</p> <p>Cadia East - underground panel caving with development of associated surface subsidence zone.</p>	No change.
Life of Mine Cadia East and Ridgeway Ore Production	<p>Approximately 525 Mt of Cadia East Ore.</p> <p>Approximately 96 Mt of Ridgeway Ore.</p>	No change (potential restart of Ridgeway to facilitate mining of the remaining 15Mt of approved resource).
Waste Rock Management	<p>Deposition in the North and South Waste Rock Dumps and mined-out void of the Cadia Extended open pit. Cadia East waste rock to be deposited in the South Waste Rock Dump.</p> <p>Material for the construction of the Northern TSF (NTSF) encapsulation and Southern TSF (STSF) embankment construction to be sourced from non-acid forming material from the site waste rock dumps.</p>	No change.
Life of Mine	<p>Mining up until approximately 2031.</p> <p>Project Approval to 2031.</p>	No change.
Tailings Management	<p>Use of the NTSF and STSF and raising of these storages via centreline/downstream embankment lifts. Installation of additional buttressing of the STSF embankment.</p> <p>Deposition of tailings in the Cadia Hill open pit to its full capacity, to a (pre-consolidation) level of approximately 713 m Australian Height Datum .</p> <p>Cumulative tailings disposal volume of 674 Million tonnes from 2013.</p> <p>NTSF repairs to restore embankment by encapsulation of majority of the slumped section.</p>	<p>Changes to the embankment footprint of the NTSF and STSF, such that the embankment and associated disturbance area extents include areas outside of existing Mining Leases.</p> <p>Construction of a trial tailings embankment from hydrocyclone sands sourced on site.</p> <p>Change to working hours for TSF construction into the evening with compliance with noise criteria of PA 06_0295.</p>
Ventilation Adit	<p>The mining complex includes several ventilation adits/shafts for ventilation of underground mining areas.</p> <p>Decommissioning and closure of existing adit Ventilation Rise 10-1 located within the Cadia Hill open pit.</p> <p>Ventilation shaft within the current approved mine disturbance footprint to replace adit Ventilation Rise 10-1.</p>	Two upcast ventilation fans on the surface to support the Cadia East underground mine (i.e. Ventilation Rise 5 and Ventilation Rise 11).

1 PA 06_0295 for the Cadia East Project, as modified by section 75W Modifications numbered 1 to 10, section 4.55(1A) Modification numbers 11 to 13 and section 4.55(2) Modification number 14. Consistent with Clause 3BA of Schedule 2 of the Environmental Planning and Assessment (Savings, Transitional and Other Provisions) Regulation 2017, the consent authority is required to satisfy itself that any consent as modified would result in the Cadia East Project remaining substantially the same development as was last modified under section 75W (i.e. Modification 10), inclusive of consideration of the changes arising from the previously approved modifications (i.e. Modifications 11 to 14). Information to allow this comparison will be provided in the Modification Report.

Current Approved Operations and the Modification Elements (continued)

Project Component	Current Cadia Project Approval	Proposed
Ore Processing	On-site processing of up to 32 Mtpa of gold and copper ore. Increasing the on-site ore processing to 35 Mtpa is subject to Condition 6A of Schedule 2.	No change to the ore processing throughput. Upgrades to the Potassium Amyl Xanthate (PAX) facility. Two hydrofloat cells located within the existing Cadia Ore Processing Facilities' disturbance footprint.
Concentrate Transport and Dewatering	Gold/copper concentrate is transported from the ore processing facilities via a concentrate pipeline to the Blayney Dewatering Facility (now decommissioned and Modification 15 proposes to remove all conditions associated with the decommissioned Blayney Dewatering Facility).	No change.
	The Cadia Dewatering Facility to the east of Blayney and the subsequent decommissioning of the existing Blayney Dewatering Facility (now complete).	No change.
	Concentrate pipeline from Cadia to the Cadia Dewatering Facility in Blayney.	No change.
	Transport of dewatered mineral concentrate by rail to the eastern seaboard.	Changes to the operation of the Cadia Dewatering Facility to allow train loading and related operations during evening and night time hours. This will not result in any change to the total number of train movements generated by Cadia. Minor administrative changes to remove conditions relating to the former Blayney Dewatering Facility from the Project Approval.
Process Consumables	Sodium Hydrosulphide Solutioning Plant (located adjacent to the Molybdenum Recovery Plant) to produce sodium hydrosulphide on-site to meet Cadia's operational requirements.	20 percent increase in PAX consumption.
Water Supply and Management	Water supply sourced from the Cadiangullong Dam, Flyers Creek Weir, Cadia Creek Weir, Orange Sewage Treatment Plant treated effluent, Blayney Sewage Treatment Plant treated effluent, on-site groundwater bores, Belubula River, Cadia Extended open pit and site runoff.	Further realignment of the Belubula River pipeline.
	Additional pipeline/pumping systems and raising of the Rodds Creek Water Holding Dam.	No other changes to the overall water supply and management strategy for Cadia.
	Contingent transfer of supernatant tailings water from STSF and NTSF to Cadia Hill open pit for water management.	
	Internal tailings return water pipeline and pumping systems from Cadia Hill open pit.	

Current Approved Operations and the Modification Elements (continued)

Project Component	Current Cadia Project Approval	Proposed
Power Demand and Supply	<p>Peak demand to 179 megawatts (MW) (using existing power supply infrastructure).</p> <p>132 kV electrical substation.</p>	<p>Expansion of the existing 132 kV electrical substation</p> <p>The peak power demand is estimated to be 194 MW.</p> <p>This increase is due to:</p> <ul style="list-style-type: none"> • Power to supply the two additional upcast ventilation fans described previously • Commencement of mobile fleet electrification • Re-Installation of the STSF decant pump system <p>Since approval of Modification 14, Cadia has established a modified Connection Agreement with Essential Energy for the estimated peak power demand. This will support the above as well as increasing production to 35Mpta as described in PA 06_0295 Schedule 2, Condition 6A.</p>
Employment	<p>An average of approximately 945 employees with an additional construction/development workforce of up to approximately 860 personnel. Intermittent shutdown periods require a nominal workforce of approximately 300 to 700 additional personnel during these periods.</p>	<p>An average of approximately 1090 to 1140 employees (i.e. an additional 150- 200 personnel associated with the recommencement of Ridgeway) with an additional construction/development workforce of up to approximately 970 personnel (i.e. an additional 110 personnel associated with the TSF construction works).</p> <p>No change to the intermittent shutdown workforce personnel.</p>
Final Landforms	<p>Includes South Waste Rock Dump, North Waste Rock Dump, NTSF, STSF, Cadia East Subsidence Zone, Ridgeway Subsidence Zone, Cadia Hill open pit, Cadia Extended open pit, Cadiangullong Dam, Rodds Creek Holding Dam and other water management infrastructure.</p> <p>The final landform of Cadia Hill pit would be a pit lake (i.e. a wet cover).</p> <p>No intersection between the Cadia East underground mine subsidence zone and Cadia Hill open pit in the long term and, therefore, two separate final void waterbodies (smaller in extent compared with the approved subsidence zone) (as described in MOD 13).</p>	<p>Buttressing the exterior embankment of the NTSF and STSF changes the location of the embankments toe (i.e. footprint).</p> <p>A change to location of the subsidence impacts from Ridgeway mining. The total area of predicted subsidence impact is smaller than that approved.</p>

Environmental Assessment Process

The environmental assessment details the potential environmental and social impacts which may occur due to the Modification. Where potential impacts have been identified, the environmental assessment recommends measures to minimise, manage and offset these potential impacts.

The Modification is being sought under section 4.55(2) of the *Environmental Planning & Assessment Act 1979* (EP&A Act). The Modification Report considered the following key environmental aspects:

- Noise
- Air Quality and Greenhouse Gas
- Groundwater
- Surface water
- Biodiversity
- Aboriginal Cultural Heritage
- European History
- Socio-economics
- Traffic and Road Transport
- Hazards
- Visual lighting.

Benefits of the Modification

The key benefits of the Modification include:

- Enable the continued use of the NTSF and STSF approved tailings storage capacity, in a safe and stable manner for the remainder of the approved mine life (i.e. up to 2031)
- Continued employment for the predominantly local workforce
- Continued significant economic contributions to the local, regional and state economies
- Continued support to local community based groups and initiatives
- Through the implementation of the Modification, Cadia can continue to coexist with the local community.



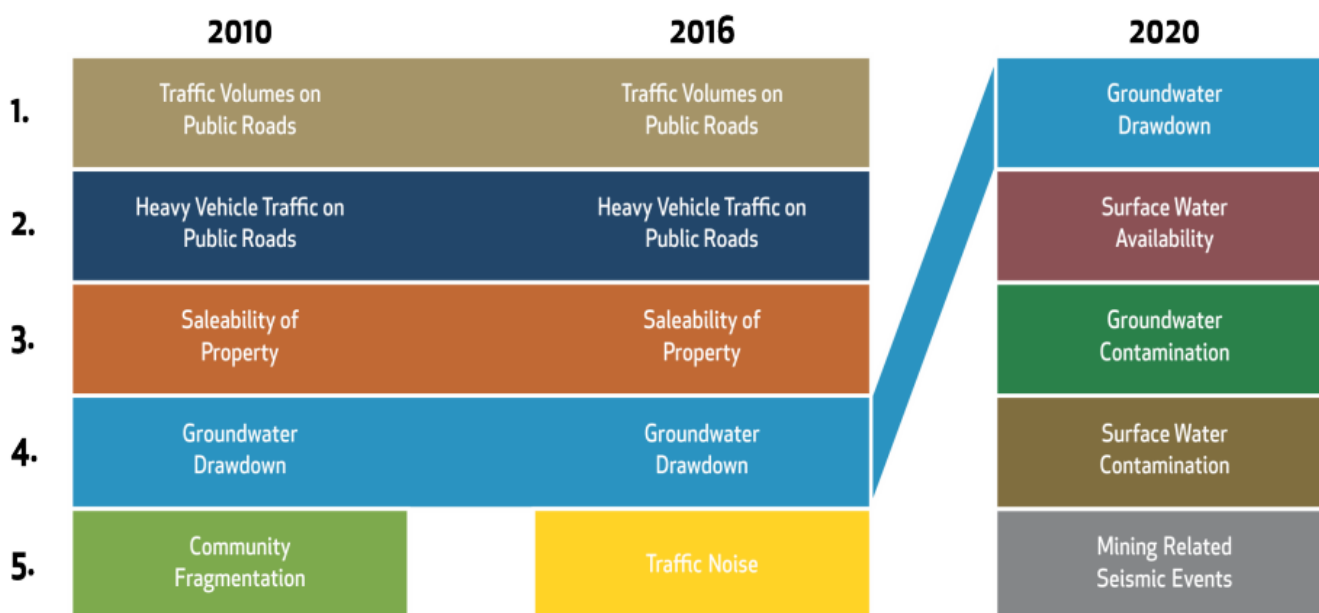
Project Design Considerations

Cadia, as a long-term member of the local community, believes in the importance of achieving a balance between maintaining an ongoing safe operation that supports the local community and managing the impacts of the operation.

Mining operations at Cadia commenced in 1998 with the Cadia Hill Open Cut Mine, underground mining commenced in the early 2000s at Ridgeway and in 2010 at the Cadia East Underground Mine. The community has been actively engaged with the mine since mining first commenced.

The concerns of Cadia's stakeholders have evolved over time, particularly as the region has moved from drought, through to a wetter than average season, and now the prospects of drought again. There is now a heightened focus on issues such as groundwater drawdown, with past top concerns no longer ranking within the top five issues of 2020, as illustrated in Figure 5.

Throughout the 25 years of operation and the development of the Modification, Cadia has proactively introduced operational design strategies, management approaches, and mitigation measures. These initiatives are specifically aimed at minimising the potential impacts of concern to the community.



Source: Umwelt 2020.

Figure 5: Top 5 Prompted Concerns – Survey Comparison

Project Design Considerations (continued)

The Modification considers the key learnings from operating the existing mine, feedback from the community and other stakeholders, the findings of the socio-economic study, and the findings of the detailed environmental assessment. During the preparation of the environmental assessment, The Modification has been refined to minimise environmental and social impact in response to the feedback in the following ways:

NOISE AND AIR QUALITY

- Operational changes associated with the arrival and departure of trains in Blayney to reduce noise emissions at the Cadia Dewatering Facility
- Additional noise attenuation will be fitted to reduce noise emissions from the loudest TSF construction equipment
- A real-time monitoring and forecasting system would operate in conjunction with a Trigger Action Response Plan (TARP) to assist with managing air quality and noise levels
- Implementation of additional dust scrubbers in the underground operations and dust management measures on the TSF.

TRAFFIC AND TRANSPORT

- The design of the realigned Panuara Road sections allows for most of the realignment to be constructed with minimal disruption to traffic. Any impacts are limited to the construction of the final connection with the existing alignment
- Implementation of a bus services to transport workers (employees and contractors) from Orange, Bathurst and Millthorpe to the operation along with the Cadia Carpooling Program to reduce cars on the road.

DISTURBANCE FOOTPRINT REDUCTION

- A reduction in the total disturbance footprint by approximately 17 hectares (i.e. 7 percent) to limit biodiversity impacts
- Offsetting the biodiversity impact of the Modification using the mechanisms allowed by the NSW Biodiversity Offsets Scheme.



Noise

A detailed noise study was undertaken using monitoring data of the operation and modelling to assess the potential noise impacts on the surrounding residential receivers. The assessment included the potential impact of the Modification with the existing operations and cumulative impact from the operation of the nearby Flyers Creek Wind Farm.

The key source of noise would be the construction of the TSFs and associated buttressing proposed for the Modification. The assessment determined:

- The Modification will comply with current noise criteria at most receivers with only two modelled exceedances predicted
- Cadia is in discussions with these two receivers
- There were no modelled night-time exceedances
- Evening and night time train noise would be produced at the Cadia Dewatering Facility, however, impacts above criteria are limited to two receivers which are already subject to Acquisition Upon Request and Additional Noise Mitigation Measures in the current approval
- Cadia is engaging with these receivers regarding additional mitigation measures
- No adverse cumulative noise impacts are predicted when noise emissions from other developments are considered (i.e. the Flyers Creek Wind Farm)
- Surface operations and construction activities will continue to be managed through proactive monitoring and adaptive management measures to minimise noise levels.



Air Quality and Greenhouse Gas

Air quality is a key community concern. A comprehensive assessment of the potential air quality impacts has been completed for The Modification.

Air dispersion modelling was completed using various inputs including emission sources based on real-time measurements from the ventilation shafts, meteorological data, long-term air quality monitoring data and representative staged plans for the construction of the TSF. The finding from the Air Quality Assessment concluded that:

- Continued implementation of the existing air quality management controls currently in place, along with the centre pivot irrigation system on the NTSF and the dust filtration units on the ventilation shafts have been incorporated into the design of the Modification and will minimise impacts on local and regional air quality
- Predictive and real time dust management control measures will continue to be implemented to minimise dust emissions, including adaptively managing the surface operations, TSF construction activities and underground mining operations to minimise impacts during adverse weather conditions
- No exceedances of the NSW EPA's impact assessment criterion or existing PA 06_0295 criteria are predicted at any privately owned receivers for 24-hour PM10 or PM2.5 concentrations, annual average PM10 or PM2.5 concentrations, total suspended particles concentrations or dust deposition levels
- The Human Health Risk Assessment ([https://www.cadiavalley.com.au/newcrest/cvo/environmental-](https://www.cadiavalley.com.au/newcrest/cvo/environmental-management/community-air-and-water-quality-program)

[management/community-air-and-water-quality-program](https://www.cadiavalley.com.au/newcrest/cvo/environmental-management/community-air-and-water-quality-program)) found that the main sources of human health risk were not related to Cadia and that the potential risks to human health from emissions from Cadia were 'low and acceptable' with consideration of the *Health Impact Assessment (HIA) Guidelines*, Department of Health and Ageing and enHealth Council, Commonwealth of Australia, *National Environment Protection (Assessment of Site Contamination) Measure (ASC NEPM) 1999*, National Environment Protection Council (NEPC), as amended and in force on 16 May 2013 and *Australian Exposure Factor Guide*, Department of Health and Ageing and enHealth Council, Commonwealth of Australia

- Additional ventilation fan installations to be managed consistently with the point source emissions requirements of the Protection of the Environment Operations (Clean Air) Regulation 2022 and will meet criteria at private receiver locations. Air quality controls to be built into additional fan designs
- Additional greenhouse gas emissions would be associated with construction phase, meaning that Cadia is forecast to be above the threshold of CO2 emissions for one year under the Commonwealth Government's Safeguard Mechanism, which is designed to achieve Australia's emission reduction targets of 43% below 2005 levels by 2030 and net zero by 2050
- Scope two greenhouse gas emissions are reduced by approximately 30% by a Power Purchase Agreement with the Rye Park Wind Farm.



Biodiversity

Changes made to the location of infrastructure during the planning and design phase of The Modification have significantly reduced the impacts of the Modification on sensitive biodiversity features. The reduction in the disturbance footprint by 17 hectares and the relocation of infrastructure has:

- Avoided impacts to all suitable habitat trees for the superb parrot.
- Avoided impacting the Gang-Gang Cockatoo priority management.

A Biodiversity Development Assessment Report has been completed in accordance with the NSW Biodiversity Assessment Method (BAM). The BAM has been undertaken by an accredited person to assess the impacts on biodiversity from The Modification. The BAM is a credit driven system where calculators provided by the NSW Government are populated with ecological data about the site to generate a 'BAM Credit Summary Report'. Cadia is required to offset these credits using offset mechanisms allowed by the NSW Biodiversity Offsets Scheme.

The biodiversity offset package together with changes to the Modification design to minimise biodiversity impacts and offset the potential impacts to:

- Approximately 35 hectares of native vegetation and fauna habitat that is predicted to be disturbed, of which nine hectares is grasslands and 24 hectares is woodland.
- One NSW listed threatened Ecological Community: White Box – Yellow Box – Blakely's Red Gum Grassy Woodland and Derived Native Grassland Critically Endangered Ecological Community (Box Gum Woodland) is within the revised disturbance footprint.
- Following the site survey, only two fauna were retained for input into the NSW Government calculator: Squirrel Glider and Superb Parrot.

Aboriginal Cultural Heritage

In consultation with the registered Aboriginal party and other interested stakeholders, Cadia has sought both knowledge and advice regarding the social historic, aesthetic and scientific values present within the Modification area. Aboriginal stakeholder involvement in the Aboriginal Cultural Heritage Assessment process has included review and comment on the proposed survey methodology, walks on Country archaeological survey of the area and review and comment on the draft report.

The assessment of the Modification area found:

- One previously identified potential archaeological deposit – near Rodds Creek (Pardoe, 2007)

- Historical ground disturbance (land clearing, farming, embankment works) potential for unidentified place or objects is low.
- Harm to Aboriginal cultural heritage places or objects is unlikely if Cadia's existing management measures are implemented.
- Cadia will continue to implement the mitigation and management measures to protect and salvage Aboriginal artefact and sites that have been developed in consultation with the Aboriginal parties involved in the assessment.

European History

A European history assessment has been undertaken. This assessment identified:

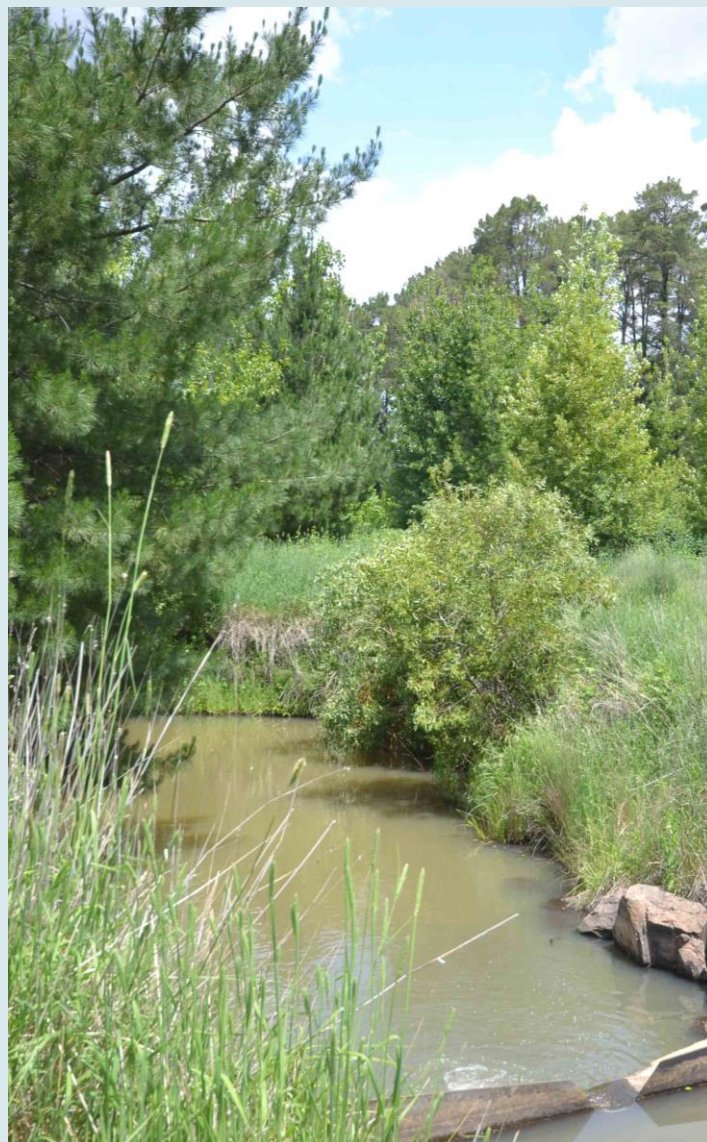
- The Flyers Creek Water Race for the Wire Gully Gold Workings - east of the current STSF.
- The water race is of local historical heritage significance (e.g. mining technology of the early twentieth century)
- Archival recording of the water race has been completed.
- No other historical cultural heritage sites were recorded in the study area.
- There is low to negligible likelihood for any additional historical cultural heritage places or objects occurring due to the Modification.

Surface water

A surface water assessment has been undertaken for the Modification.

The assessment found:

- Minor changes to the existing site water management system (i.e. location of pipelines and some water management dams) are required in response to the changes to the NTSF and STSF embankment footprint.
- The potential impact to stream flow in Swallow Creek from restarting mining at Ridgeway will be negligible.
- The change in the geometry of the Ridgeway subsidence zone will have a negligible impact on surface water runoff to Swallow Creek.
- The relocation of water management dams with the Cadiangullong Creek catchment equates to approximately 1% reduction of the catchment area and is considered inconsequential to streamflow in Cadiangullong Creek downstream of Cadia's operations as it would release water from Cadiangullong Dam to achieve the specified environmental flow rates.
- Water collected in the water management dams will continue to be reused on site. No impact on water quality within the surrounding creeks has been predicted.
- No material changes to on and off-site surface water impacts from The Modification.



Groundwater

The groundwater impact assessment reviewed the existing groundwater environment with data collected over the life of the current operation from 237 monitoring bores, long term climate data, surface water gauging stations at Swallow, Cadiangullong and Flyers Creek, as well as data collected from fieldwork and testing programs and assessed the impact on the environment using a groundwater model. The key findings of this assessment are:

- Limited change in seepage was associated with proposed new TSF configurations and modified filling schedule.
- The predicted inflow rates at Ridgeway are consistent with that observed.
- Limited cumulative drawdown impacts associated with the restart of the Ridgeway Underground Mine.
- The two metre groundwater drawdown contour is mostly contained within the Cadia mine lease boundary and does not extend to any private bores springs, or groundwater dependent ecosystems.
- The predicted water take from aquifers and baseflow changes are less than the current Water Access Licence volumes held by Cadia.
- No changes to the current groundwater management approach (i.e. Water Management Plan) are recommended, except for the installation of new groundwater monitoring bores to replace those that are located within the changed embankment footprint.

Traffic and Road Transport

This assessment considers the potential impacts of the Modification on traffic and transport.

The assessment determined that:

- The Modification would generate an additional 42 light vehicle and one heavy vehicle trip per day.
- The road network will continue to operate well when the additional vehicle trips.
- The proposed realignment of two small portions of Panuara Road would result in only minor impacts to the local road network which would be managed during construction. A traffic management plan will be developed with Blayney Council to minimise any traffic impacts during the construction period.

- No specific measures or upgrades would be required to mitigate the impacts of the Modification on the capacity, safety and efficiency of the road network.

Cadia will continue to operate its existing bus services to transport workers (employees and contractors) from Orange, Bathurst and Millthorpe to the operation.

Access to Cadia will continue to be via Ridgeway Road and / or the Molybdenum Plant Access Road. While Ridgeway typically operates as the main entry and departure point, either access location may operate as the main entry and departure due to road closures and / or restrictions within Cadia.



Hazards

A preliminary hazard assessment has been undertaken, which identified and considered the expansion of the Potassium Amyl Xanthate (PAX) Dosing Plant as other Modification elements were not considered to be potentially hazardous.

PAX is a flotation reagent used during ore processing. It is associated with the hydrofloat cells and maximises the recovery of coarse particles from the processing circuit and reduces the energy use of milling operations.

The hazard assessment determined that the risk of the Modification (i.e. PAX) impacting the environment, members of the public and their property is considered low.

Cadia's approved environmental management plans and monitoring programmes would be reviewed and, if necessary, revised to incorporate the PAX upgrade, including any additional mitigation measures as described in the assessment.

Agriculture

An Agricultural Resources Assessment was undertaken for the disturbance area of the Modification that is not covered by an existing mining leases.

There would be a temporary removal of approximately 28.2 ha of agricultural land from service during the life of Cadia. Minimal disturbance would be associated with this land and approximately 26.2 ha would be returned to agricultural use, with no reductions in land and soil capability. The remaining approximate two ha are associated with the tailings dam

embankment slope and would not be suitable for agricultural land use due to the slope.

Cadia proposes to continue existing land management practices which would include an extensive weed and feral animal control program in conjunction with the surrounding landowners as part of its ongoing Farm Management Strategy.



Visual

The existing operation is already part of the visual landscape within the surrounding region. The Modification would result in minor changes to the footprint of the NTSF and STSF embankments, with no change to the maximum approved tailings deposition height of the TSF embankments. Therefore, the Modification is likely to have minimal impact on the existing visual amenity of the surrounding region and would not result in any additional significant visual impacts.

Lighting associated with the buttressing works and supporting infrastructure (i.e. fixed lighting and lighting from mobile plant) located in the southern part of the operation is likely to be visible from public viewing locations (e.g. local roads and dwellings to the south of Cadia).

This would add to the visual intensity of the existing visual catchments from residential dwellings, however, this is not expected to significantly change the visual amenity of the existing viewshed as they are not the dominant feature, and fixed lighting and lighting from the mobile plant currently occurs as part of Cadia's ongoing operations. Any visual impacts to motorists would be short in duration and will remain consistent with the current visual amenity.

Rehabilitation and Final Landform

Areas disturbed as part of the operation that are not required for the ongoing operation of Cadia will be progressively rehabilitated.

The Cadia Rehabilitation Management Plan has been developed and has the following goals:

- Add value to the current vegetation corridor programme (ecological value).
- Allow for the future land use of grazing where appropriate and sustainable (agricultural value).
- Retain areas that may be important for future industry and infrastructure needs.
- Provide safe and stable landforms and minimise any adverse potential impacts so that there is limited future liability for Newmont or the community.

The Modification would require minor changes to the final landform due to the increased embankment footprints as shown on Figure 2.



Public Exhibition

Cadia has submitted its application to the Department of Planning and Environment (DPE) for The Modification.

The DPE has now placed The Modification on public exhibition from Friday, 24 November 2023 until Thursday, 14 December 2023. The environmental assessment can be viewed on The DPE's website which can be accessed via the following link

<https://www.planningportal.nsw.gov.au/major-projects/projects/mod-15-various-including-tailings-dam-embankment-upgrade>.

Alternatively accessed via the following link

<https://www.cadiavalley.com.au/newcrest/cvo/statutory-approvals/current-modifications>.

Hard copies of the environmental assessment can be viewed at Orange City Council, Blayney Shire Council and Cabonne Council offices.

The public is invited to provide comments and make submissions to the DPE during the public exhibition of the Modification application via the Planning Portal.

Upcoming Community Information Sessions

Date	Event	Time
28 November 2023	Residents Meeting Cadia Valley Operations (Wiradjuri Room)	6pm to 8pm
30 November 2023	Community Drop in Session Cadia Valley Operations (Wiradjuri Room)	8am to 10am
30 November 2023	Community Drop in Session Panuara Tennis Facility	4pm to 6pm

Key contacts

Rod Williams - Manager, Approvals and Permitting

0427 125 688 or rodney.williams@newmont.com

Emily Miller - Community Engagement Specialist

0447 253 161 or emily.miller@newmont.com