

Sydney Gateway

February 2023
Project Update

Sydney Gateway will provide a new, toll-free connection from St Peters Interchange to improve journey times to Sydney Airport, the M5 and Eastern Distributor.

The Sydney Gateway team achieved a number of major milestones in 2022, and passed 50% completion. 2023 will be our biggest year yet, with many major milestones and traffic changes expected across our work sites in Tempe, Mascot and St Peters.

Work will include headstock, girder and barrier installation. Bulk earthwork for the Qantas Drive on-ramp has started. Road and pavement work will also continue eastbound along Qantas Drive, involving minor traffic changes.

Oversized deliveries of bridge structures to our work sites will continue at Mascot, Tempe (some via Bellevue Street) and St Peters including via Burrows Road South. This includes out-of-hours heavy vehicle deliveries, lifting activities and concrete pours.



Deliveries have started to arrive at our Tempe site for the twin arch bridges.

Sydney Gateway Kiosk

Our team is excited to once again have our digital kiosk available at the Clock On/Off cafe for our Tempe community.

Functions on the kiosk include our interactive 3D map where you can explore Sydney Gateway as well as connecting to our portal to read up on our latest work.

Clock On/Off Cafe is located at 880 Princes Highway, Tempe in Sydney's Inner West.



Check out our interactive kiosk at Clock On/Off cafe, Tempe.

What is in this update?

In this February Project Update you'll find more information on:

- What Sydney Gateway will achieve in 2023.
- Sydney Gateway and the community.
- On the road with our Traffic Team.
- What's happening next on Sydney Gateway?

If you would like to stay up to date and learn more about our upcoming works, scan the QR code and register for email updates.



What's happening onsite?

Mascot

Motorists travelling along Qantas Drive will see the flyover taking shape west of Robey Street, Mascot. You can also see the start of the Arrivals ramp being built along Sir Reginald Ansett Drive into the Domestic Airport precinct.

The large, double headstock on Sir Reginald Ansett Drive was safely installed in December 2022. The 18.5 meter precast concrete headstock weighing up to 200 tonnes was lifted into place with precision by a 400T and a 450T, mobile cranes. This headstock will carry the flyover as it divides into the two separate ramps.

The last building that was for demolition along Qantas Drive has been successfully dismantled, with further road widening and utility installation activities planned near the Lancastrian Road overpass.

This year, we will install girders over the intersection of O'Riordan Street (planned for mid-March) and Robey Street (scheduled for June) to link up the Qantas Drive piers to complete the flyover structure.



The double headstock being installed over Sir Reginald Ansett Drive, Mascot.



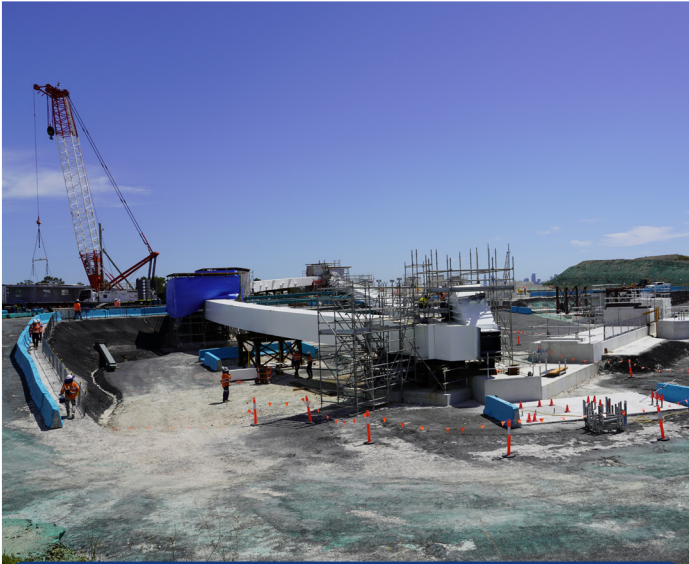
The start of the flyover ramp taking shape in the middle of Qantas Drive, Mascot.



Work continuing on the Departures ramp over Sir Reginald Ansett Drive, Mascot.



Piling work for piers that will support the flyover on Qantas Drive, west of Robey Street.



Workers assembling the Twin Arch Bridges at Tempe.

Tempe

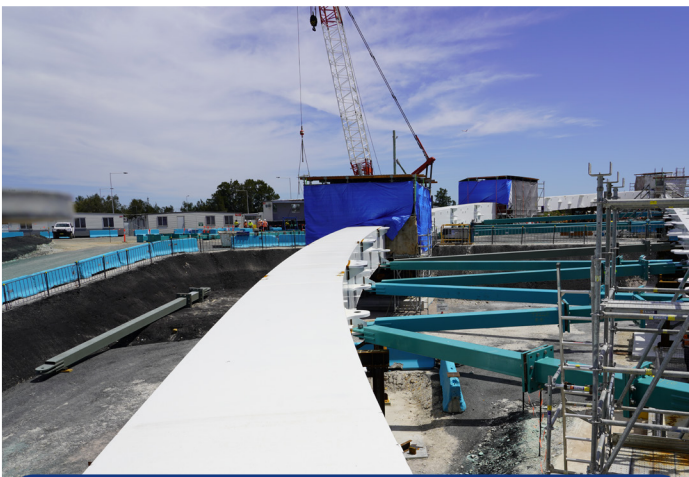
The Project Team at our Tempe site has been busy assembling our twin arch bridges including out-of-hours welding and grinding. This is in preparation for lifting the first (northbound) arch into a vertical position in the coming weeks. The arch bridge is the large structure that will carry traffic to and from the International Terminal.

Deliveries of bridge sections are ongoing via Nigel Love Bridge, as well as steel sections of the launch nose and floor beams.

Additionally, construction of our suspension bridge over the Botany Rail Freight line is continuing, including out-of-hours deliveries and installation of concrete planks, some via Bellevue Street.



Engineers overseeing a shed delivery at our Tempe site where our Twin Arch Bridges are being assembled.



The arch of one of the Twin Arch Bridges with some teal coloured temporary struts in place.



An artist's impression of the Twin Arch Bridge showing the arches with the teal coloured temporary struts.

St Peters

Our Northern Lands team at our St Peters site are busy building nine of Sydney Gateway's 19 bridges and structures, including the connection from St Peters Interchange over Canal Road and the large bridge that will take traffic over Alexandra Canal and the rail corridor.

Since major work has started, we have:

- Completed 90% of all retaining walls (Height of the tallest wall stands at 8 meters)
- Placed 240,000m³ of dirt to form part of the new road alignment
- Completed 90% of our bridge substructures within Northern Lands
- And our team are also on track to commence pavement construction from March 2023.

Drainage work was completed over the holiday period in December 2022/January 2023 during a week long rail possession. Large drainage pipes (seen in the image below) were installed under the Australian Rail and Track Corporation's freight line that runs through the Northern Lands site. The work was completed successfully and ahead of schedule.

Minor route changes were made to the Active Transport Link (pedestrian and cycle path) in January 2023 with a temporary diversion in place for pedestrians and cyclists travelling eastbound, after crossing Nigel Love Bridge. This change allows for work on the bridges over the Alexandra Canal to continue without ongoing disruption to path users.



Continuing works on bridge structures in the Northern lands.



Drainage work during the holiday rail possession.



View from St Peters Interchange of our Northern Lands site.

Out in the Community

Sydney Gateway STEM LEGO Challenge

Recently, staff from the Sydney Gateway Project visited JJ Cahill Memorial High School, in Mascot. The students were tasked with building a bridge for the Sydney Gateway STEM LEGO Challenge.

By using LEGO bricks, students can get a better picture of two basic principles that engineers consider, static loading and dynamic loading.

Sydney Gateway staff created a prototype of our very own suspension bridge out of LEGO to have on display and went through the specifications of the build with the students.

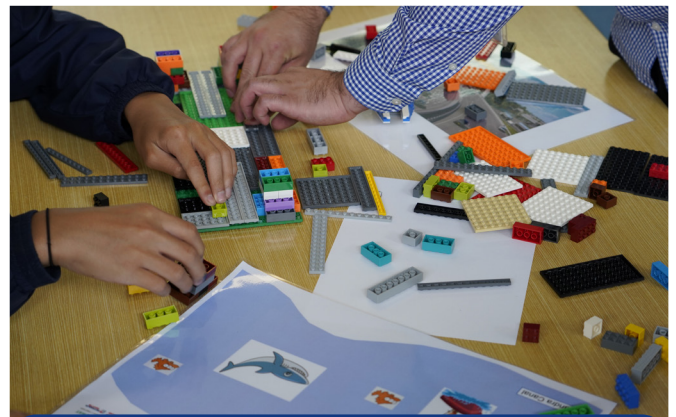
There were three main requirements the group had to achieve, aesthetics, quality and weight bearing. The Science students from Year 9 and 10 were split into teams and given 45 minutes to carry out their work. 10 minutes was dedicated to the design aspect, with 35 minutes assigned to the construction of their bridges.

At the end of the challenge the Sydney Gateway team judged each of the builds based on the specifications given. There were some truly remarkable and imaginative builds which all passed the specifications and heavy load challenges.

But there could only be one winner, with the lucky students being given the opportunity to visit our Twin Arch Bridges once complete. In order to continue the students interest in engineering and construction, Sydney Gateway has offered work experience opportunities to students interested in careers in infrastructure.

What is STEM?

STEM (Science, Technology, Engineering and Mathematics) learning is important for students in their everyday life in our contemporary world, with the rise of new technologies in biomedicine, microfabrication, IT, robotics and engineering. The ability to understand and apply data, and develop solutions to complex problems, will be important life skills.



Construction begins on the LEGO suspension bridge.



Heavy load brick challenge.

Scan the QR code to view our current work activities on our interactive map



On the road with our Traffic Team

Managing traffic is critical to the success of a major infrastructure project like Sydney Gateway. We have a specialised Traffic Control Room (TCR) which continually monitors traffic and pedestrians movements throughout the Project. This is mission control for our Traffic Team and is staffed 24/7, with 18 cameras positioned across the Project including the Active Transport Link, watching for any incidents. If an incident does occur, our traffic team are quick to respond, working with emergency services and providing assistance in our specialised Incident Response Vehicle.

As Sydney Airport returns to post covid passenger numbers we have seen a significant increase in traffic volumes surrounding the Project. Traffic volumes have increased from around 15,000 vehicles/per day in mid-2021 to over 40,000 and our traffic management planning has had to adapt to these changes. We work closely with Sydney Airport and the greater transport network when planning our works to minimise the impact they have on the road network.

2023 will be an exciting year on the road for Sydney Gateway with 19 traffic switches planned. Some of these will be small lane changes, where as others will be much larger with motorists moving onto new sections of road and travelling over the bridges you may have seen under construction.



What's happening next on Sydney Gateway?

Scan the QR code to watch our latest Upcoming Works video.



In the coming months we will install girders over the intersection of O'Riordan Street and Robjoy Street to connect the sections of the flyover already completed on Qantas Drive.

Additionally, ongoing utilities work will continue on Airport Drive and Qantas Drive, including out-of-hours work.

In St Peters, there will be some upcoming weekend closures on Canal Road in order to connect with Transport for NSW's Intelligent Transportation System (ITS). This system allows the Traffic Management Centre to monitor and respond to traffic conditions, enabling them to maximise the performance of the motorway and provide more reliable journeys.

Safety is our priority

To keep you and our workers safe, we have footpath, road and lane changes in place whilst we carry out our work. Please plan ahead and follow the direction of traffic controllers and signage.

For enquiries or complaints:

 nswroads.work/SydneyGateway

 1800 654 446 (24/7)

 SydneyGateway@jhs.com.au



Translating and interpreting service

If you need help understanding this information, please contact the Translating and Interpreting Service on **131 450** and ask them to call us on **1800 654 446**.