

Bicentennial Park site establishment at West Botany Street and President Avenue, Rockdale

October 2021

Transport for NSW is building the M6 Stage 1, a four kilometre twin tunnel connection between the M8 at Arncliffe and President Avenue at Kogarah, linking south Sydney to the wider motorway network.

How will we establish our site?

From Wednesday 27 October work will start to establish our Bicentennial Park construction site, corner West Botany Street and President Avenue, Rockdale. This site will support the construction of the northbound entrance and southbound exit of the tunnel.

Work to establish our site will include:

- installing fences and noise walls around site boundaries
- building work platforms and internal access roads
- installing site offices and worker amenities
- installing environmental controls and establishing an environmental exclusion zone around the creek and surrounding vegetation in Bicentennial Park
- removing buildings at our West Botany Street site and levelling ground
- removing vegetation within the site compound

What will happen as we establish our site?

As part of our work activities to effectively establish our site (see map overleaf) we will be:

- closing the Bayside Council car park to the local community (located north-west of Bicentennial Park) for the duration of our work. Some designated parking will be retained for local businesses.

- temporarily closing the pedestrian pathway between West Botany Street and Kings Road in Bicentennial Park, with a new pathway scheduled to open in March 2022. Pedestrian access will be maintained at the bridge over the pond during this time.

COVID-19 Public Health Orders

NSW Government restrictions require work to be undertaken in line with the current Public Health Orders and a COVID-19 Safety Plan is currently in place including wearing face masks and use of QR codes which are strictly enforced.

Our work schedule

Work to establish our construction site will take up to four months to complete, weather permitting.

Standard construction work hours are:

- **7am to 6pm, Monday to Friday**
- **8am to 1pm, Saturday**

How will the work affect you?

We understand that our work activities may cause disruption to the local community and we thank you for your patience while we complete this important work. We are committed to working with local residents and businesses to mitigate the impact of our work as much as possible.

Our work can be noisy at times and we will be using a range of measures to reduce the impact of our work when we are close to communities.

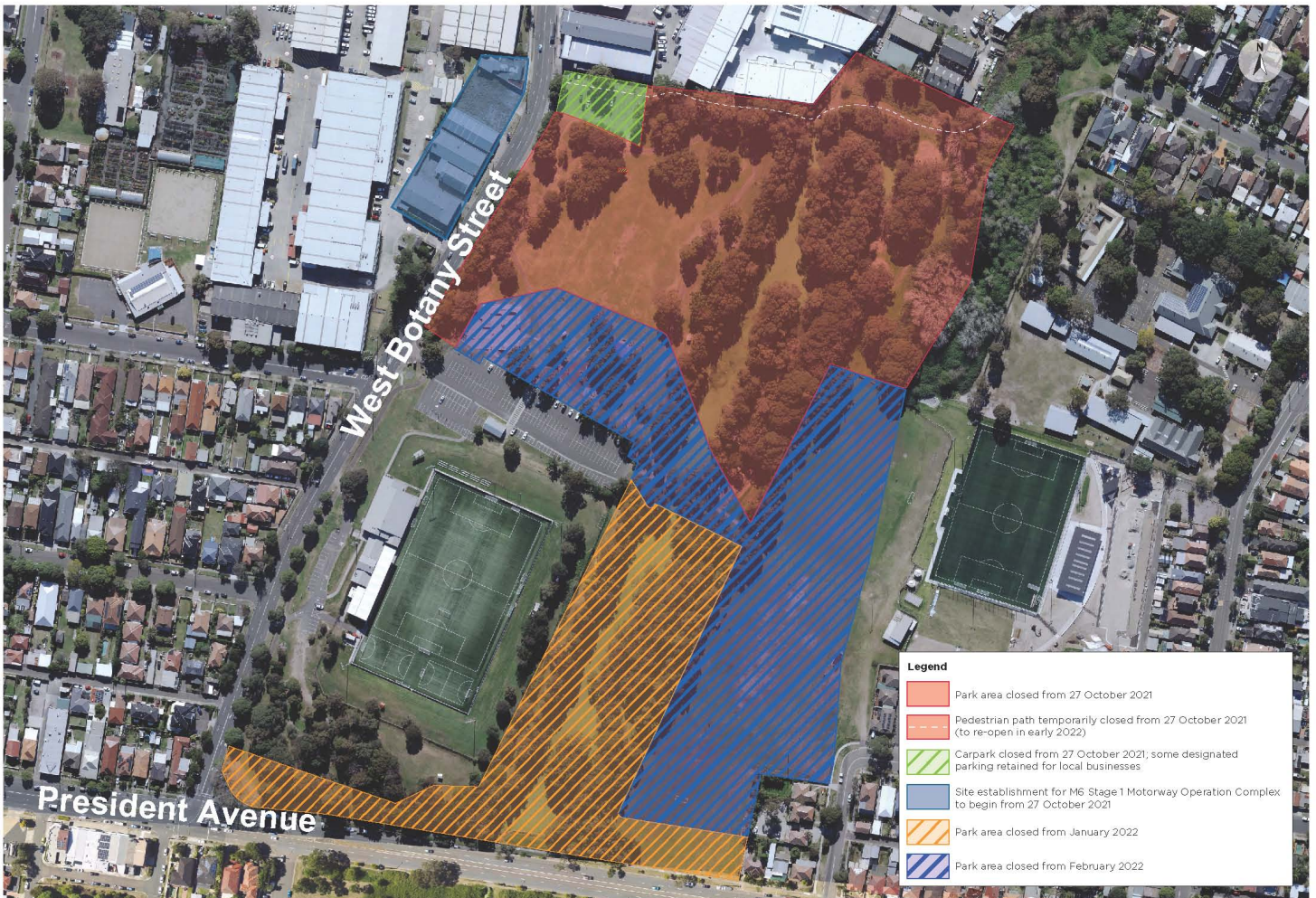


Image: Map of Bicentennial Park site

What you may notice

You may notice an increase in workers and vehicles in the area with the main site access via West Botany Street.

The safety of the community is our highest priority and we are working closely with our contractor to establish our sites safely and implement traffic management plans to reduce inconvenience to motorists, cyclists and pedestrians.

You are invited to our online forum

We invite you to attend our online forum to be held on **Thursday 14 October from 5pm to 6pm.**

This forum will provide an overview of all our site establishment arrangements and the opportunity for you to ask questions of the project team.

To register to attend the forum, please **RSVP** by **Tuesday 12 October** by emailing info@M6Stage1.com.au

Once we receive your details we will send a link to the Livestream session.

You can also scan our QR code to **RSVP** by using your smart phone or tablet.



Contact us

For more information on the M6 Stage 1 please contact our project team:



1800 789 297



info@M6Stage1.com.au



<https://caportal.com.au/rms/m6>



PO Box 7261
Alexandria NSW 2015



If you need help understanding this information, please contact the Translating and Interpreting Service on 131 450 and ask them to call us on 1800 789 297.