



Australian Government

BUILDING OUR FUTURE

Transport for NSW

Princes Highway upgrade

We're building a safer, more reliable, more resilient and better connected network

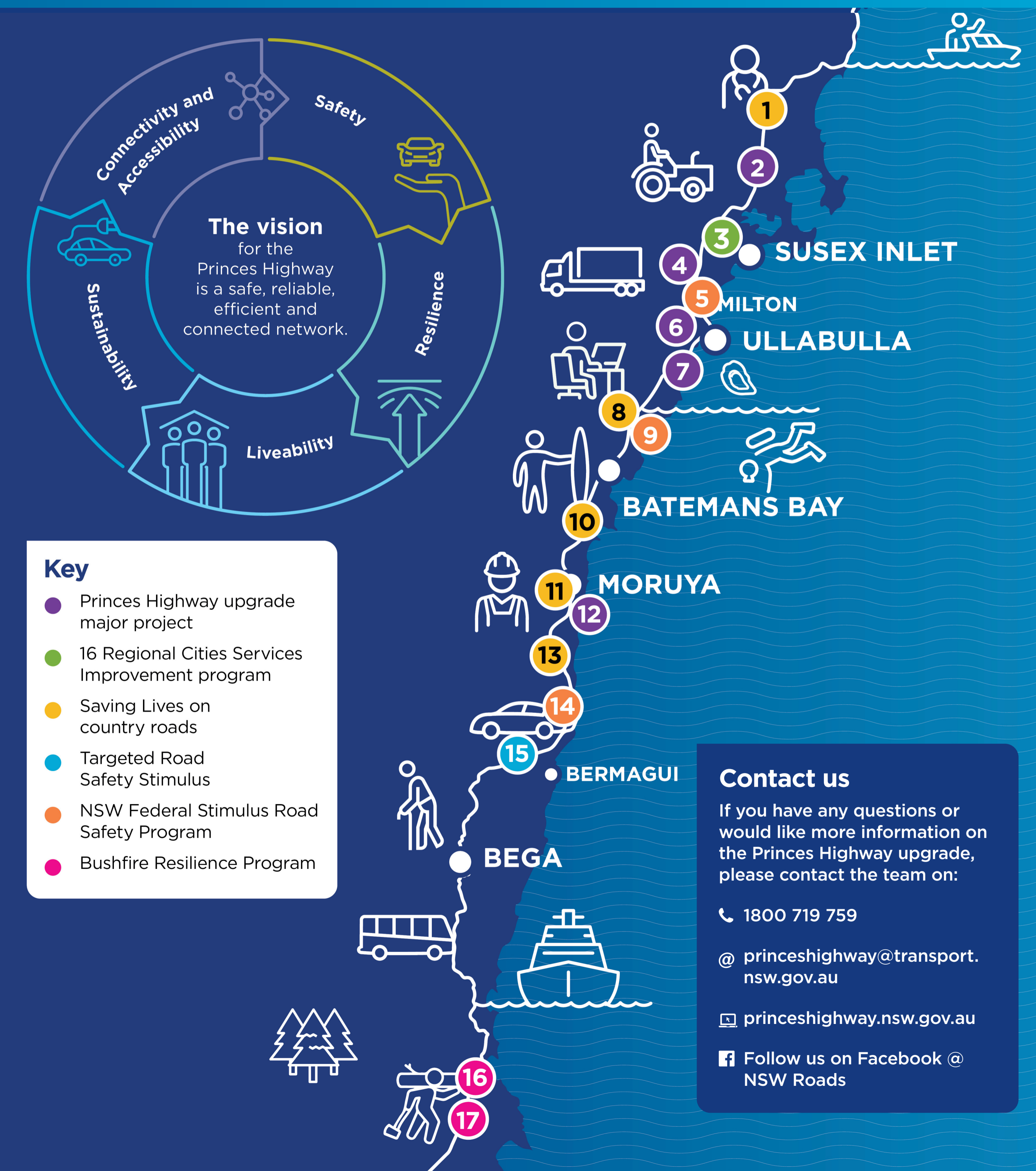
Progress between January 2021 and July 2021



NSW
GOVERNMENT

- 1** Improvements at Warra Warra Road roundabout, South Nowra, including vehicle activated signs to improve safety.
- 2** **Jervis Bay Road and Princes Highway intersection upgrade**
Transport for NSW displayed an environmental assessment and concept design on the project in June 2021. Early work remains on track to start in late 2022.
- 3** **16 Cities Services Improvement program**
Transport for NSW invited transport customers to have their say on the program in early 2021. The program aims to improve public transport services across Greater Nowra. Key themes raised included providing regular and frequent services, more bus services to connect to train services, shorter journey times and more services at a reasonable cost.
- 4** **Jervis Bay Road to Sussex Inlet Road upgrade**
Transport for NSW released a consultation report, following the community's feedback on the preferred strategic corridor in late 2020. The preferred strategic corridor continues to be investigated, before a preferred option is confirmed in late 2021. Cardno Pty Ltd have been appointed to deliver the concept design for the project.
- 5** **Targeted Road Safety Stimulus**
Improvements at Milton including new traffic lights to improve pedestrian safety and traffic flow.
- 6** **Milton Ulladulla bypass**
Transport for NSW released a consultation report, following the community's feedback on the preferred strategic corridor in late 2020. It confirmed the strategic corridor remains the preferred route for the bypass because it will take more than twice the amount of traffic from the existing highway in the future, compared to western options. The preferred route also provides flexible options that will enable access to towns for residents, businesses and community members. WSP have been appointed to deliver the concept design for the project.
- 7** **Burrill Lake to Batemans Bay upgrade, including the Burrill Lake community co-design committee**
Transport for NSW established a community co-design committee to plan the highway upgrade at Burrill Lake, including the southern connection of the Milton Ulladulla bypass. The independent committee brings together representatives from community groups and residents, Transport, and other government agencies to explore and identify options which will be presented to the wider community for feedback.

Transport for NSW is continuing to investigate the highway upgrade between Burrill Lake and Batemans Bay. This includes reviewing existing data, carrying out additional studies and completing strategic design work.
- 8** Improvements at Termeil, including shoulder and centreline widening and dedicated turning lane into Bawley Point Road.
- 9** Improvements south of Termeil at Stephens Creek including shoulder and centre line widening and a median barrier to improve safety.
- 10** Improvements between Mogo and Moruya including shoulder and centreline widening and new guardrails to improve safety.
- 11** Improvements south of Moruya including shoulder and centreline widening and improved drains to improve safety and resilience
- 12** **Moruya bypass**
Transport for NSW invited community feedback on the preferred strategic corridor option in May 2021. Community consultation and environmental investigations are ongoing to inform the detailed features and location of the corridor. ARUP have been appointed to continue investigating the bypass design.
- 13** Improvements north of Bodalla including shoulder and centreline widening and improved drains to improve safety and resilience.
- 14** Improvements at Narooma including extended pedestrian kerbs to improve pedestrian safety.
- 15** Improvements at Cobargo including extended pedestrian kerbs to improve pedestrian safety.
- 16** Improvements along the highway network at Falls Creek, North Batemans Bay, Bega and south of Eden including eight kilometres of new guardrail to improve safety.
- 17** Vegetation removal along the highway network between Falls Creek and Bega to improve bushfire and highway resilience.



Contact us

If you have any questions or would like more information on the Princes Highway upgrade, please contact the team on:

☎ 1800 719 759

@ princeshighway@transport.nsw.gov.au

🌐 princeshighway.nsw.gov.au

📺 Follow us on Facebook @ NSW Roads