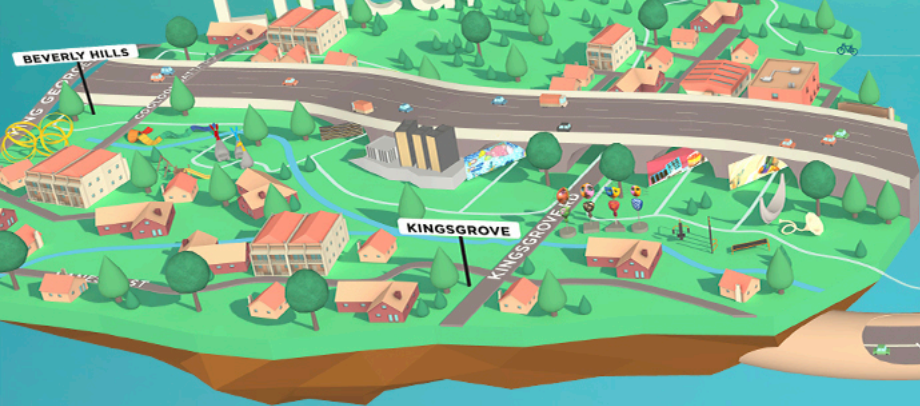


Canal to Creek

WestConnex | Transurban

THE WESTCONNEX PUBLIC ART PROGRAM

Linear Park



St Peters



Canal to Creek

WestConnex | Transurban

VADEA
NSW

VISUAL ARTS & DESIGN
EDUCATORS ASSOCIATION

Carbon Store: STEPHEN KING



Concept

CARBON STORE: STEPHEN KING

Tree Association

- Spend one minute writing down all the words or ideas that come to mind when you think about the word tree.
- Compare your list with a peer's. What similarities or differences are there between your ideas? Are there any common themes that your ideas share?

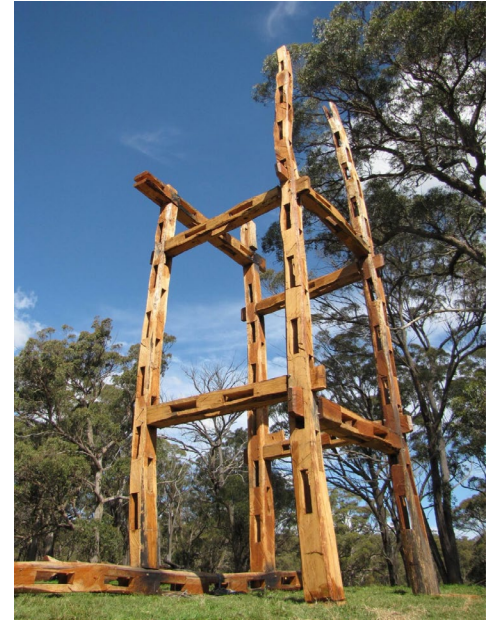


Conceptual Framework - Artwork

CARBON STORE: STEPHEN KING

Carbon Store is a monumental sculpture, created by artist Stephen King for the WestConnex Public Art Program - 'Canal to Creek'. Made of Australian hardwood, it is a monumental 14.5 metres high and weighs a staggering 9.5 tonnes.

- **What is your immediate response to this artwork? What does it remind you of or make you think about?**
- **What do you think the title refers to?**
- **What clues does this give you about the ideas the artist might want to communicate to his audience?**



Conceptual Framework - Artist

CARBON STORE: STEPHEN KING

Stephen King lives and works as both an artist and a farmer on his family property in Walcha, NSW. To create Carbon Store, King worked directly from silvertop stringybark trees, chainsawing the trunks into trussed beams. The artist sources the trunks from windfallen trees on his property, or local and sustainable timber plots.

- Why do you think the artist chooses to use natural materials sourced from his own property?
- Consider some of the events that impacted NSW's environment around the time this artwork was created.
- What meaning does this bring to the artist's use of materials from this region?



Conceptual Framework - Artwork

CARBON STORE: STEPHEN KING

The artist transforms the trunks into sculptural beams on his property

- What do you notice about the way the artist is working in this photo?
- Why do you think the artist has chosen to use a chainsaw rather than automated machinery to create these beams?



Art Practice

CARBON STORE: STEPHEN KING

- What does Stephen King say about Carbon Store? Video [here](#)
- What are the artist's intentions for this artwork?

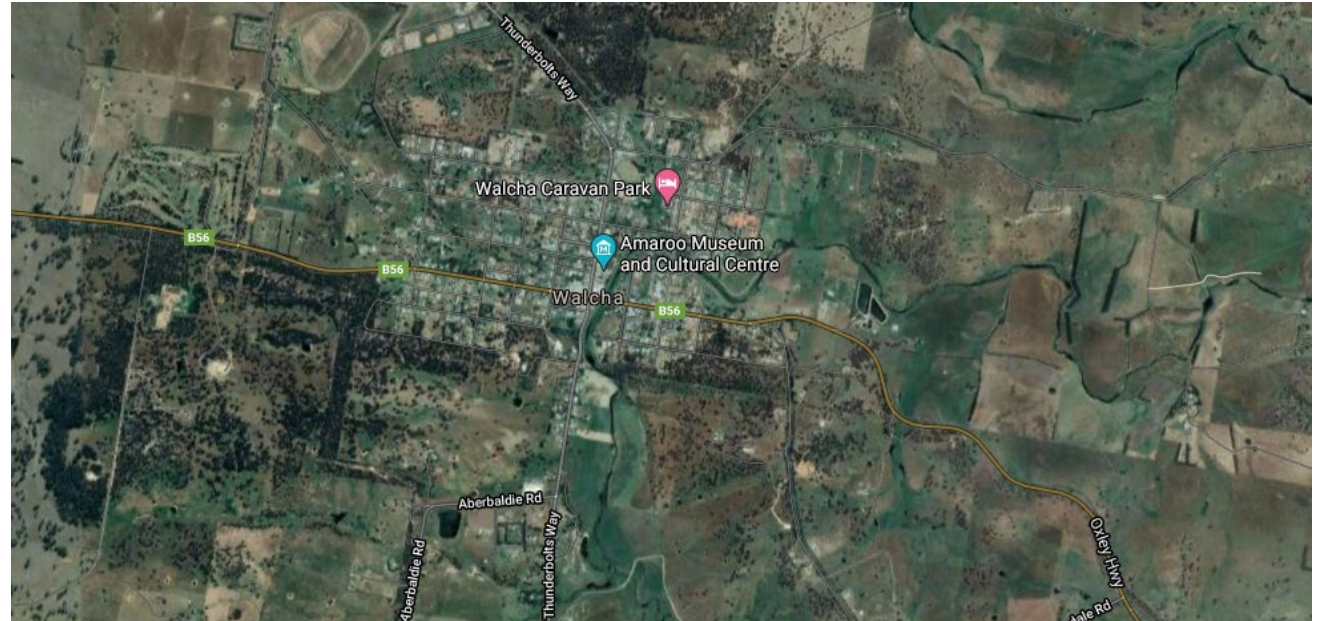


Tree Change

CARBON STORE: STEPHEN KING

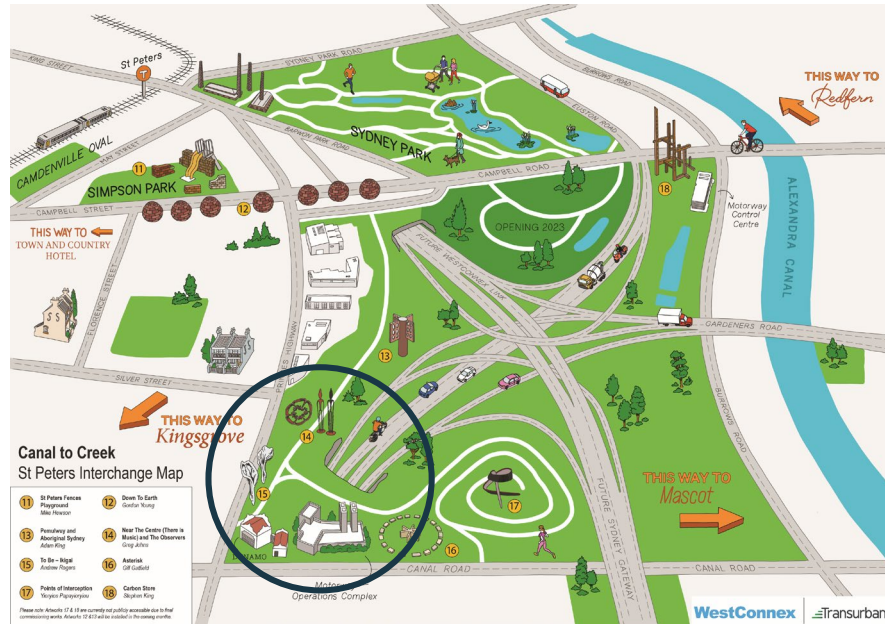
Search 'Walcha' on Google Maps.
What do you see? How would you describe the landscape?

Now, search 'St Peter's Interchange' on Google Maps.
What do you see? How does it compare to Walcha?



The Site

CARBON STORE: STEPHEN KING



Created in Walcha from local trees, the artwork is located at the St Peter's Interchange in Sydney's inner-west. The monumental scale of the structure causes it to tower above the entry to the WestConnex underground motorway.

- Consider this artwork alongside the architecture and environment you saw around the St Peter's Interchange on Google Maps.
- How does King's structure fit in?
- How does it stand out?
- How might the artwork's position at this site change the way you understand it?

Conceptual Framework - Audience

CARBON STORE: STEPHEN KING

Like many of Stephen King's artworks, Carbon Store is a public and outdoor artwork. Along with the other works in the Canal to Creek Public Art Program, this artwork has been commissioned with the purpose of enhancing the public's relationship to their surrounding environment.

- **Compare a public artwork like Carbon Store to an artwork you might find in a gallery or museum. How are they different?**
- **Who do you imagine when you think about a typical audience member in a gallery or museum? How do they behave in these spaces?**
- **How are audiences of public artworks different?**



Carbon Store and you

CARBON STORE: STEPHEN KING

Spend time exploring Carbon Store virtually via the [Canal to Creek website](#).

- What is your response to the artwork?
- How would you interact with it if you physically visited the site?
- What are some of the benefits of being able to view it online?

