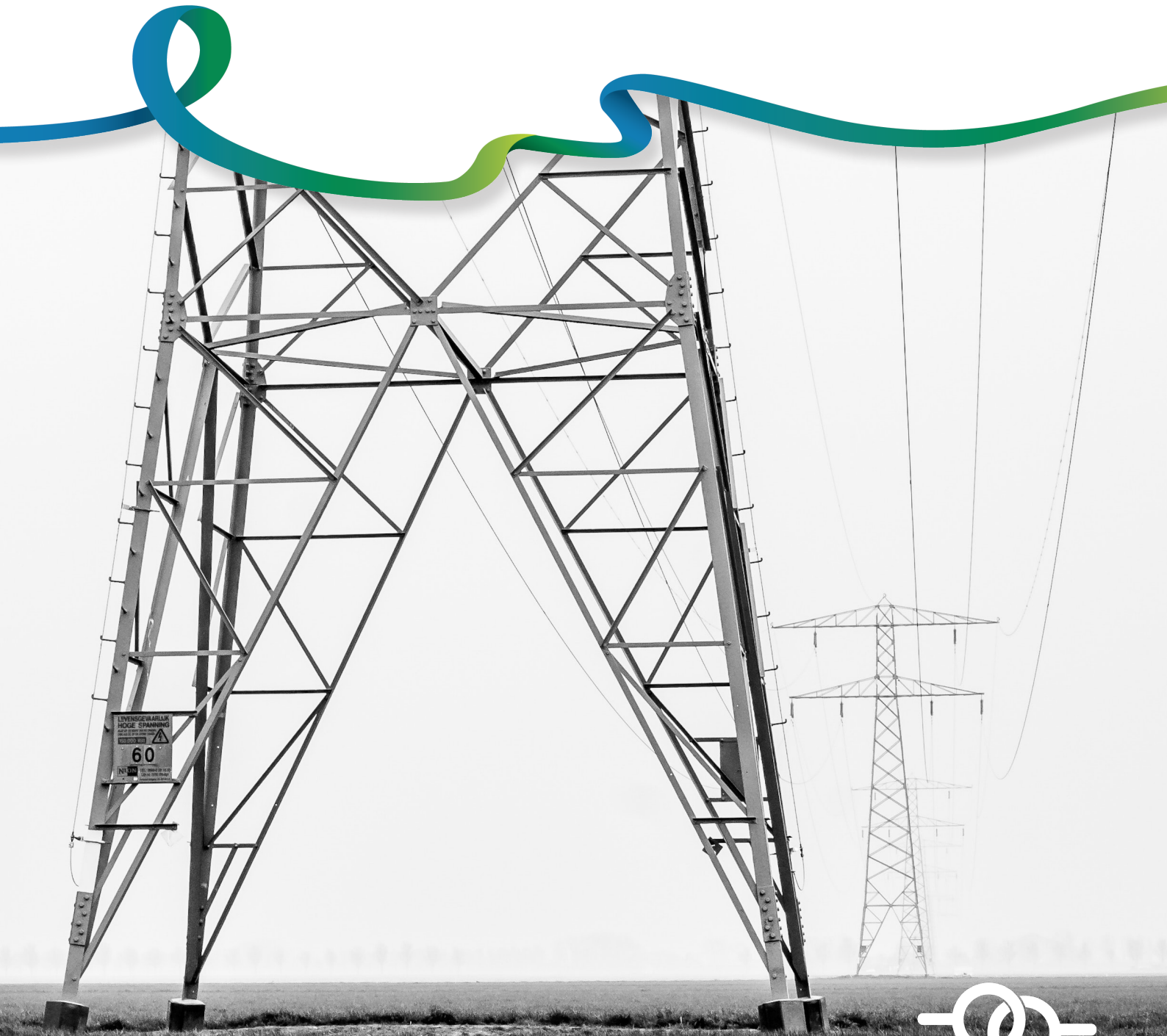


References



22. References

A

- ABS (2017a). *2016 Census QuickStats*. Canberra: Australian Bureau of Statistics. Accessed at <https://www.abs.gov.au/websitedbs/D3310114.nsf/Home/2016%20QuickStats>.
- ABS (2017b). *Value of Agricultural Commodities Produced, Australia, 2015-16*. Cat. No. 7503.0. Accessed at <https://www.abs.gov.au/AUSSTATS/abs@.nsf/DetailsPage/7503.02015-16?OpenDocument>.
- ABS (2018). *Socio-Economic Indexes for Australia (SEIFA) 2016*. Cat. No. 2033.0.55.001. Accessed at <https://www.abs.gov.au/websitedbs/D3310114.nsf/home/About+TableBuilder>.
- ACCC (2004). *Transmission network investment*. Canberra: Australian Competition and Consumer Commission. Accessed at <https://www.accc.gov.au/speech/transmission-network-investment>.
- ACIL Allen (2019). *South Australia New South Wales Interconnector, updated analysis of potential impact on electricity prices and assessment of broader economic benefits*. ACIL Allen Consulting.
- AEMC (2019). *Last Resort Planning Power – 2019*. Final report, 28 November 2019. Sydney: Australian Energy Market Commission.
- AEMC (2020). *National Electricity Market*. Accessed 2020 at <https://www.aemc.gov.au/energy-system/electricity/electricity-system/national-electricity-market>.
- AEMO (2017). *Interconnector Capabilities: For the National Electricity Market*. Melbourne: Australian Energy Market Operator. Accessed at <https://aemo.com.au/Electricity/National-Electricity-Market-NEM/Security-and-reliability/Congestion-information/Network-status-and-capability>.
- AEMO (2018a). *Integrated System Plan: For the National Electricity Market*. Accessed at <https://aemo.com.au/energy-systems/major-publications/integrated-system-plan-isp/2018-integrated-system-plan-isp>.
- AEMO (2018b). *2018 South Australian Electricity Report*. Accessed at <https://www.aemo.com.au/Electricity/National-Electricity-Market-NEM/Planning-and-forecasting/South-Australian-Advisory-Functions>.
- AEMO (2020a). *2020 Integrated System Plan: For the National Electricity Market, July 2020*. Accessed at <https://aemo.com.au/energy-systems/major-publications/integrated-system-plan-isp>.
- AEMO (2020b). *2020 South Australian Electricity Report*. Accessed at <https://www.aemo.com.au/Electricity/National-Electricity-Market-NEM/Planning-and-forecasting/South-Australian-Advisory-Functions>.
- AEMO (2020c). *Minimum operational demand thresholds in South Australia, May 2020*. Accessed at https://www.aemo.com.au/-/media/Files/Electricity/NEM/Planning_and_Forecasting/SA_Advisory/2020/Minimum-Operational-Demand-Thresholds-in-South-Australia-Review.
- AEMO (2020d). *NEM Generation Information November 2020*. Accessed at <https://www.aemo.com.au/energy-systems/electricity/national-electricity-market-nem/nem-forecasting-and-planning/forecasting-and-planning-data/generation-information>.
- AER (2020a). *AER approval of QNI RIT-T moves vital project closer to completion*. Australian Energy Regulator. Accessed at <https://www.aer.gov.au/news-release/aer-approval-of-qni-rit-t-moves-vital-project-closer-to-completion>.
- AER (2020b). *State of the energy market 2020*. Accessed at <https://www.aer.gov.au/publications/state-of-the-energy-market-reports/state-of-the-energy-market-2020>.

- AER (2020c). *AER approves South Australia – NSW interconnector regulatory investment test*. Accessed at <https://www.aer.gov.au/news-release/aer-approves-south-australia-%E2%80%93-nsw-interconnector-regulatory-investment-test>.
- AILA (2018). *Guidance Note for Landscape and Visual Assessment*. Version 2. Queensland: Australian Institute of Landscape Architects.
- ALT (2002). *Submission to TransGrid on the Environmental Impact Statement for the Proposed SA-NSW Interconnector (SNI)*. Victoria: Australian Landscapes Trust.
- ANZECC/ARMCANZ (2000). *Australian and New Zealand Guidelines for Fresh and Marine Water Quality*. Australian and New Zealand Environment and Conservation Council (ANZECC) and Agriculture and Resource Management Council of Australia and New Zealand (ARMCANZ).
- ANZG (2018). *Australian and New Zealand Guidelines for Fresh and Marine Water Quality*. Canberra: Australian and New Zealand Governments and Australian state and territory governments.
- Auhl I (1986). *The Story of the “Monster Mine” – The Burra Burra Mine and its Townships 1845 – 1877*. South Australia: District Council of Burra Burra.

B

- Baker-Gabb D and Hurley VG (2011). *National Recovery Plan for the Regent Parrot (eastern subspecies) *Polytelis anthopeplus monarchoides**. Melbourne: Department of Sustainability and Environment.
- Barnett S (2015). *Assessment of the groundwater resources in the non-prescribed areas of the South Australian Murray-Darling Basin*. DEWNR Technical report 2015/09. Adelaide: DEWNR.
- BCSR (2001). *What causes crime? Crime and justice bulletin 54*. Bureau of Crime Statistics and Research (NSW). Accessed at <https://www.bocsar.nsw.gov.au/Publications/CJB/>.
- BDBSA (2019) *Biological Database of South Australia*. Extract of flora and fauna records within 25 km buffer of proposed alignment, plus additional Biosphere Regional Reserve Records, extract (Recordset number DEWNRBDBSA190902-2, September 2019). Adelaide: DEW.
- BDBSA (2020) *Biological Database of South Australia*. Extract of flora and fauna records within 25 km buffer of proposed alignment, plus additional Biosphere Regional Reserve Records, extract (Recordset number DEWNRBDBSA201201-1, November 2020). Adelaide: DEW.
- BDO EconSearch (2020). *Project EnergyConnect (South Australian Portion) Socioeconomic Assessment*. Report to JBS&G, 22 December 2020. Adelaide: BDO EconSearch.
- Beca (2019). *SAET interconnector – structure section study*. Australia: Beca Pty Ltd.
- Beca (2020). *EnergyConnect (NSW – Western Section) Environmental Impact Statement. Technical paper 11 - Electric field and magnetic field study*. Sydney: TransGrid.
- Benshemesh J (2007). National recovery plan for malleefowl. Accessed at <https://www.environment.gov.au/resource/national-recovery-plan-malleefowl-leipoa-ocellata>.
- BOM (2020). *Climate Data Online*. Bureau of Meteorology. Accessed at <http://www.bom.gov.au/climate/data/>.
- Brown CM and Stephenson AE (1991). *Geology of the Murray Basin, Southeastern Australia*. Bulletin 235. Bureau of Mineral Resources, Geology and Geophysics Australia.
- Burke H, Roberts A, Morrison M, Sullivan V and RMMAC (2016). *The space of conflict: Aboriginal/European interactions and frontier violence on the western Central Murray, South Australia, 1830-41*. Aboriginal History, Volume 40, 2016. Canberra: the Australian National University.

C

- Carpenter G (2002). *SA-NSW Interconnector – Monash to NSW/SA Border Potential Impacts on Avifauna*. Working Paper 4. Sydney: TransGrid.
- CCA (2020). *Prospering in a Low-Emissions World: An Updated Climate Policy Toolkit for Australia*. Climate Change Authority. Accessed at <https://www.climatechangeauthority.gov.au/publications/prospering-low-emissions-world-updated-climate-policy-toolkit-australia>.
- CEC (2018). *Community Engagement Guidelines for Building Powerlines for Renewable Energy Developments*. Clean Energy Council. Accessed at <https://www.cleanenergycouncil.org.au/advocacy-initiatives/community-engagement/community-engagement-guidelines-for-building-powerlines-for-renewable-energy-developments>.
- CEC (2019). *Australia's Clean Energy Investment Outlook*. Accessed at <https://www.cleanenergycouncil.org.au/resources/resources-hub/australias-clean-energy-investment-outlook>.
- CER (2020). *Clean Energy Regulator Annual Report 2019–20*. Tabled 29 October 2020. Clean Energy Regulator. Accessed at <http://www.cleanenergyregulator.gov.au/About/Accountability-and-reporting/Annual-Reports>.
- CFS (2018). *South Australian Firebreaks, Fire Access Track and Sign Standards Guidelines*. Country Fire Service. South Australia.
- Churchill S (2008). *Australian Bats*, 2nd edition, Sydney: Allen & Unwin.
- Clarke I, Stokes Z and Wallace R (2010). *Habitat Restoration Planning Guide for Natural Resource Managers*. Adelaide: Department of Environment and Natural Resources.
- COAG (1992). *National Strategy for Ecologically Sustainable Development*. Prepared by the Ecologically Sustainable Development Steering Committee. Endorsed by the Council of Australian Governments, December 1992, Canberra: Department of Agriculture, Water and the Environment
- Cogger HG (2014). *Reptiles and Amphibians of Australia*. Seventh Edition. Australia: CSIRO Publishing.
- Croft SJ, Pedler JA and Milne T (2009). *Bushland condition monitoring manual: Murray Darling Basin, South Australia*. South Australia: Nature Conservation Society of South Australia and the South Australian Murray-Darling Basin Natural Resources Management Board.
- CSIRO (Commonwealth Scientific and Industrial Research Organisation) (2011). *Atlas of Australian Acid Sulphate Soils*. GIS dataset. Accessed at <http://www.asris.csiro.au>.

D

- Dallwitz and Marsden (1984). *Heritage survey of the Murray River (Region 5 - South Australia)*. Adelaide: Department of Environment and Planning.
- DataSA (2019). *Road crash data*. Accessed at <https://data.sa.gov.au/data/dataset/road-crash-data>. Adelaide: South Australian Government Data Directory.
- DAWE (2020a). *The Ramsar Convention on Wetlands and Riverland Ramsar site*. Department of Agriculture, Water and the Environment. Accessed at <https://www.environment.gov.au/water/wetlands/ramsar> and [https://www.environment.sa.gov.au/managing-natural-resources/wetlands/Riverland Ramsar site](https://www.environment.sa.gov.au/managing-natural-resources/wetlands/Riverland_Ramsar_site).

- DAWE (2020b). *Calperum and Taylorville Stations*. Accessed at <https://www.environment.gov.au/topics/national-parks/associated-programs/australias-biosphere-reserves/calperum-taylorville-stations>. Canberra: Department of Agriculture, Water and the Environment.
- DAWE (2020c). *Species Profiles and Threats Database*. Accessed at <http://www.environment.gov.au/cgi-bin/sprat/public/sprat.pl>.
- DAWE (2021a). Listed Critical Habitat - *Manorina melanotis* (Black-eared Miner) - Gluepot Reserve, Taylorville Station and Calperum Station, excluding the area of Calperum Station south and east of Main Wentworth Road. Accessed January 2021 at <http://www.environment.gov.au/cgi-bin/sprat/public/publicshowcriticalhabitat.pl?id=2>. Canberra: Department of Agriculture, Water and the Environment.
- DAWE (2021b) *Topics: Mundulla Yellows*. Accessed at <https://www.environment.gov.au/biodiversity/invasive-species/diseases-fungi-and-parasites/mundulla-yellows>.
- Deane D, Graves C, Magarey PD and Phipps L (2006). *Preliminary assessment of the impacts of water resource development on Burra Creek catchment*. DWLBC Report 2008/01. Adelaide: Department of Water, Land and Biodiversity Conservation.
- DEFRA (2005). *Noise database for prediction of noise on construction and open sites*. United Kingdom: Department for Environment, Food and Rural Affairs.
- DEH (2001). *Biodiversity Plan for the South Australian Murray-Darling Basin*. Prepared by Kahrimanis MJ, Carruthers S, Oppermann A and Inns R. Adelaide: Department for Environment and Heritage.
- DEH (2004a). *Habitat Critical to the Survival of Manorina melanotis (Black-eared Miner)*. Canberra: Department of Environment and Heritage. Accessed at <http://www.environment.gov.au/node/14571>.
- DEH (2004b). *Mundulla Yellows in Eucalyptus An abiotic or biotic disorder? A multi-disciplinary investigation of an unknown etiology*. Adelaide: Department of the Environment and Heritage.
- DEH (2008). *Spiny Daisy-bush. Olearia pannosa ssp. pannosa*. Biodiversity Conservation Unit, Adelaide Region. Adelaide: Department for Environment and Heritage.
- DEH (2009). *Fire Management Plan: Bookmark Mallee 2009-2019*. Adelaide: Department for Environment and Heritage, Adelaide.
- DEHA (1998). *Heritage of the Murray Mallee: District Councils of Karoonda-East Murray, Renmark Paringa and Loxton Waikerie, Mid Murray Council, Coorong District Council, Southern Mallee District Council and Rural City of Murray Bridge*. Adelaide: Department for Environment, Heritage and Aboriginal Affairs. Accessed at [https://data.environment.sa.gov.au/content/heritage-surveys/murray-mallee-\(heritage-of-the\)-1998.pdf](https://data.environment.sa.gov.au/content/heritage-surveys/murray-mallee-(heritage-of-the)-1998.pdf).
- DELWP (2016). *National Recovery Plan for the Mallee Emu-Wren Stipiturus mallee, Red-lored Whistler Pachycephala rufogularis, Western Whipbird Psophodes nigrogularis leucogaster*. Prepared by the Victorian Department of Environment, Land, Water and Planning. Canberra: Department of the Environment.
- DEM (2020). *South Australia's Energy Solution: A secure transition to affordable renewable energy*. Adelaide: Department for Energy and Mining.
- Dennis TE, Detmar A, Brooks AV and Dennis HM (2011). *Distribution and status of White-bellied Sea-Eagle, Haliaeetus leucogaster, and Eastern Osprey, Pandion cristatus, populations in South Australia*. South Australian Ornithologist, Vol 37(1):1-18.

- DEP (1983). *Heritage Survey of the Lower North, Part Two – D.C. Robertstown*. Accessed at <https://data.environment.sa.gov.au/Content/heritage-surveys/Lower-North-Regional-Survey-DC-Robertstown-1983.pdf>. Adelaide: Department of Environment and Planning.
- Department of Regional Development and Lands (2011). *Travelling in Outback Western Australia*. WA Government.
- Detmar SA and Dennis TE (2018). *A review of Osprey distribution and population stability in South Australia*. South Australian Ornithologist, Vol 43(1-2) Accessed at https://www.researchgate.net/publication/340273248_A_review_of_Osprey_distribution_and_population_stability_in_South_Australia.
- DEW (2009a). *Water erosion potential*. GIS dataset 1049. Department of Environment and Water. Accessed at <https://data.environment.sa.gov.au/NatureMaps>.
- DEW (2009b). *Wind erosion potential*. GIS dataset 1050. Accessed at <https://data.environment.sa.gov.au/NatureMaps>.
- DEW (2009c). *Acid sulfate soil potential*. GIS dataset 1078. Accessed at <https://data.environment.sa.gov.au/NatureMaps>.
- DEW (2009d). *Alkalinity*. GIS dataset 1079. Accessed at <https://data.environment.sa.gov.au/NatureMaps>.
- DEW (2009e). *Salinity – Non-watertable*. GIS dataset 1063. Accessed at <https://data.environment.sa.gov.au/NatureMaps>.
- DEW (2009f). *Surface soil texture*. GIS dataset 1066. Accessed at <https://data.environment.sa.gov.au/NatureMaps>.
- DEW (2016a). *Shallow Standing Water Level*. GIS dataset 1021. Accessed at <https://map.sarig.sa.gov.au>.
- DEW (2016b). *Shallow Total Dissolved Salts*. GIS dataset 1026. Accessed at <https://map.sarig.sa.gov.au>.
- DEW (2018). *Chowilla Game Reserve and Regional Reserve*. Accessed at <https://southaustralia.com/products/riverland/attraction/chowilla-game-reserve-and-regional-reserve>.
- DEW (2019a). *Directions for a Climate Smart South Australia*. Department for Environment and Water Accessed at <https://www.environment.sa.gov.au/topics/climate-change/climate-smart-sa>.
- DEW (2019b). *South Australian River Murray Water Resource Plan Area Risk Assessment*, DEW Technical report 2018/05, Adelaide: Department for Environment and Water.
- DEW (2020). *South Australian Traditional Owners of the River Murray*. Adelaide: Department for Environment and Water. Accessed at <https://www.environment.sa.gov.au/topics/river-murray/about-the-river/traditional-owners#:~:text=The%20First%20Peoples%20of%20the,are%20part%20of%20its%20existence>.
- DEW (2021a). *Fauna and Flora*. Various GIS datasets. Accessed at <https://data.environment.sa.gov.au/NatureMaps/>.
- DEW (2021b). *Millennium Drought*. Department for Environment and Water. Accessed at <https://www.environment.sa.gov.au/topics/river-murray-new/current-dry-conditions/millennium-drought>.
- DEWNR (in prep, 2016). *Bushland Condition Monitoring Community potential fauna habitat assessment*. Unpublished spreadsheet. Native Vegetation Branch, Department for Environment Water and Natural Resources.

- DISER (2019). 'A Fair Deal on Energy'. Department of Industry, Science, Energy and Resources. Accessed at <https://www.energy.gov.au/publications/fair-deal-energy>
- DISER (2020). *National Greenhouse Accounts Factors*. Australian National Greenhouse Accounts, October 2020. Canberra: Department of Industry, Science, Energy and Resources.
- DoE (2013). *Matters of National Environmental Significance Significant Impact Guidelines 1.1 Environment Protection and Biodiversity Conservation Act 1999*. Published by Canberra: (Department of the Environment, Water, Heritage and the Arts / Department of the Environment). Accessed at <http://www.environment.gov.au/biodiversity/threatened/communities/pubs/36-conservation-advice.pdf>.
- DoEE (2017). *EPBC Act Policy Statement 3.21 - Industry guidelines for avoiding, assessing and mitigating impacts on EPBC Act listed migratory shorebird species*. Canberra: Department of Environment and Energy.
- Dooling, RJ and Popper, AN (2007). *The Effects of Highway Noise on birds*. California Department of Transportation. Accessed at www.dot.ca.gov/hq/env/bio/files/caltrans_birds_10-7-2007b.pdf.
- DoTaRS (2000). *Discussion Paper: Expanding Ways to Describe and Assess Aircraft Noise*. Commonwealth of Australia. Department of Transport and Regional Services. Accessed at http://www.dotars.gov.au/aviation/environmental/transparent_noise/files/sepb_discussion_paper.pdf.
- DPC (2019). *Better together – principles of engagement*. Second edition. Adelaide: Department of the Premier and Cabinet. Accessed at <https://bettertogether.sa.gov.au/principles-of-engagement>.
- DPC (2021) *Discovery of Aboriginal Sites and Objects*. Accessed at <https://www.dpc.sa.gov.au/responsibilities/aboriginal-affairs-and-reconciliation/aboriginal-heritage/guidance-on-aboriginal-heritage>.
- DPE (2018). *NSW Transmission Infrastructure Strategy*. Sydney: Department of Planning and Environment.
- DPIE (2019). *New South Wales Electricity Strategy*. Sydney: Department of Planning, Industry and Environment.
- DPIE (2020a). *Net Zero Plan Stage 1: 2020 – 2030*. Sydney: Department of Planning, Industry and Environment. Accessed at <https://www.environment.nsw.gov.au/topics/climate-change/net-zero-plan>
- DPIE (2020b). *NSW Electricity Infrastructure Roadmap*. Sydney: Department of Planning, Industry and Environment. Accessed at <https://energy.nsw.gov.au/government-and-regulation/electricity-infrastructure-roadmap>
- DPTI (2017). *Phytophthora (Dieback) Control Environmental Instruction 21.3*. Adelaide: Department of Planning, Transport and Infrastructure.

E

- EDSCB (2002). *Eastern Districts Soil Conservation Board District Plan, May 2002*. Eastern Districts Soil Conservation Board.
- ElectraNet (2013). *Land use guidelines for electricity transmission corridors*. Accessed at <https://www.electranet.com.au/our-approach/working-with-landholders/>.
- ElectraNet (2016). *Network Vision*. Accessed at <https://www.electranet.com.au/what-we-do/network/vision-for-our-network/>

- ElectraNet (2018). *SA Energy Transformation RIT-T: Project Assessment Draft Report*. Accessed at <https://www.electranet.com.au/projects/south-australian-energy-transformation/>.
- ElectraNet (2019a). *SA Energy Transformation RIT-T: Project Assessment Conclusions Report*. Accessed at <https://www.electranet.com.au/projects/south-australian-energy-transformation/>.
- ElectraNet (2019b). *Health, Safety, Environment & Sustainability Policy*. Adelaide: ElectraNet.
- ElectraNet (2020a). *Safety and Sustainability Standards*. Version 1.0 October 2020.
- ElectraNet (2020b). *Quality Management Requirements – EC.14171 Project Energy Connect*. Version 5.0 December 2020.
- EPA SA (2009). *Guideline for the Use of the Environment Protection (Noise) Policy 2007*, June 2009. Environment Protection Authority South Australia.
- EPA SA (2015). *South Australia's Waste Strategy (2015-2020)*, Office of Green Industries SA. Accessed at https://www.greenindustries.sa.gov.au/literature_165440/South_Australia's_Waste_Strategy_2015-2020
- EPA SA (2017). *EPA 427/16 Air and Water Quality Guideline – Concrete Batching*. Accessed at https://www.epa.sa.gov.au/files/8310_guide_concrete.pdf
- EPA SA (2018). *Construction Environment Management Plan Guideline*. Accessed at <https://www.epa.sa.gov.au/search/documents>.
- EPA SA (2019). *Evaluation distances of effective air quality and noise management*. Accessed at https://www.epa.sa.gov.au/environmental_info/air_quality/air_quality.
- EPA SA (2021) *Public Register and Site Contamination Index*. Accessed at https://www.epa.sa.gov.au/data_and_publications.
- EPA WA (2018). *Western Australia Environmental Assessment Guideline for Environmental factors and objectives*. Perth: Environmental Protection Authority Western Australia.
- Erickson Incorporated (2020). *Erickson to construct transmission towers for Sterlite Grid in the Pir Panjal Range of India*. Accessed at <https://verticalmag.com/press-releases/erickson-to-construct-transmission-towers-for-sterlite-grid-in-the-pir-panjal-range-of-india/>.

F

- Finkel A (2017). *Independent review into the future security of the National Electricity Market – blueprint for the future*. Accessed at <https://www.energy.gov.au/publications/independent-review-future-security-national-electricity-market-blueprint-future>.
- Forward LR and Robinson AC (1996). *A biological survey of the South Olary Plains, South Australia*. Adelaide: Department of Environment and Natural Resources.
- Foulkes JN and Gillen JS (Eds) (2000). *A biological survey of the Murray Mallee South Australia*. Edited by Foulkes and Gillen, Adelaide: Department of Environment and Heritage.
- Francis CD, Ortega CP and Cruz, A (2011). *Different behavioural responses to anthropogenic noise by two closely related passerine birds*. *Biology Letters*, Vol. 7: 850-852. DOI: <https://doi.org/10.1098/rsbl.2011.0359>. Accessed at <https://royalsocietypublishing.org/doi/full/10.1098/rsbl.2011.0359>.
- FTI (2020). *Assessing the Benefits of Interconnectors*. A Report for TransGrid. Prepared by FTI Consulting. October 2020.

G

- Garnett ST and Crowley GM (2000). *The Action Plan for Australian Birds 2000*. Canberra: DAWE. Accessed at <https://www.environment.gov.au/resource/action-plan-australian-birds-2000>.
- Geering A, Agnew L and Harding S (2008). *Shorebirds of Australia*. Updated 2008. CSIRO Publishing.
- Geoscience Australia (2012). *Surface Geology of Australia, 1:1 000 000 scale, 2012 edition*. Bioregional Assessment Source Dataset. Accessed at <https://data.gov.au/data/dataset/8284767e-b5b1-4d8b-b8e6-b334fa972611>.
- Geoscience Australia (2018). *The 2018 National Seismic Hazard Assessment for Australia*. Accessed at <http://www.ga.gov.au/about/projects/safety/nsha>.
- Geoscience Australia (2020). *Australian Stratigraphic Units Database*. Accessed at <https://asud.ga.gov.au>.
- GHD (2020). *Goyder South Hybrid Renewable Energy Facility Development Application Report*. June 2020.
- Government of South Australia (2011). Overall Fuel Hazard Guide for South Australia. Government of South Australia, Adelaide.
- Government of South Australia (2017). Murray Mallee Bushfire Management Area Plan. Government of South Australia, Adelaide.
- Government of South Australia (2018). Code of Practice for Fire Management on Public Land in South Australia. Government of South Australia, Adelaide.
- Government of South Australia (2020). *South Australian Government Climate Change Action Plan 2021-2025*. Accessed at <https://www.environment.sa.gov.au/topics/climate-change/climate-change-action-plan-2021-2025>
- Greening the Grid (2020). *Renewable Energy Zone (REZ) Toolkit*. Accessed at <https://greeningthegrid.org/Renewable-Energy-Zones-Toolkit>.

H

- Henderson B, Liu Y, and Baldwin D (2013). *Trends in physical and chemical aspects of water quality in the Murray-Darling Basin 1978-2012*. Australia: CSIRO Water for a Healthy Country Flagship.
- Heritage South Australia (2018). *Burra State heritage area: guidelines, DEW Technical report 2018*. Adelaide: Department for Environment and Water.

I

- IAP2 (2015). *Quality Assurance Standard for Community and Stakeholder Engagement, May 2015*. International Association of Public Participation. Accessed at https://www.iap2.org.au/Tenant/C0000004/00000001/files/IAP2_Quality_Assurance_Standard_2015.pdf.
- IAQM (2016). *Guidance on the assessment of dust from demolition and construction version 1.1*. Institute of Air Quality Management.
- ICNIRP (2010). *ICNIRP Guidelines for Limiting Exposure to Time-Varying Electric and Magnetic Fields (1-Hz - 100 kHz)*. International Commission on Non-Ionizing Radiation Protection.

J

- Jacobs (2019). *EPBC Act Protected Matters Significant Impact Assessment*. Prepared by Jacobs for Project EnergyConnect Transmission Line, South Australia, document IW198600 / A.CS.EV.300 | Rev1. Attachment 07 of Project EPBC Referral.
- Jacobs (2021). *Review of potential impacts to wetland birds*. Prepared by Jacobs for Project EnergyConnect Transmission Line, South Australia, document IS361300-0000-NE-RPT, REV E. Appended to this report.
- James R (2000). *TAFE, university or work? The early preferences and choices of students in Years 10, 11 and 12*. National Centre for Vocational Education Research. Accessed at <https://www.ncver.edu.au/research-and-statistics/publications/all-publications/tafe,-university-or-work-the-early-preferences-and-choices-of-students-in-years-10,-11-and-12>.

K

L

- Landscapes South Australia (2016). *Managing Dieback River Red Gum Communities – news*. Accessed at <https://www.landscape.sa.gov.au/ny/news/160509-managing-dieback-river-red-gum-communities-nws?BestBetMatch=dieback|1be59d70-19cf-4151-92f0-2ffbf1c88e82|e7d03be3-0325-45ee-a835-a337010799a7|en-AU>.
- Landscape South Australia (2020a). *Landscape South Australia, Northern and Yorke, Pest Plants (weeds)*. Updated on 16 December 2020. Accessed at <https://www.landscape.sa.gov.au/ny/plants-and-animals/pest-plants-and-animals/pest-plants-weeds>.
- Landscape South Australia (2020b). *Landscape South Australia, Murraylands and Riverland, Pest Plants*. Updated on 29 June 2020. Accessed at <https://www.landscape.sa.gov.au/mr/pest-plants-animals/pest-plants>.
- Location SA (2019). *MapView*. Accessed online at <https://location.sa.gov.au/viewer/>.
- Lothian A (2000). *Landscape quality assessment of South Australia*. Phd Thesis. Accessed at <http://hdl.handle.net/2440/37804>.
- Luck GW, Black R and Race D (2010). *Demographic Change in Rural Australia: Future Opportunities and Challenges in Demographic Change in Australia's Rural Landscapes: Implications for Society and the Environment*. Vol. 12: 375–384. Dordrecht: Springer Netherlands.
- Ludlow M (2020). *Electricity sector does the heavy lifting on 2030 climate target*. Australian Financial Review. Accessed at <https://www.afr.com/companies/energy/electricity-sector-does-the-heavy-lifting-on-2030-climate-target-20201210-p56m9i>
- Lyon Group (2017). *Riverland Solar and Storage Project Development Application*. Prepared by ESG & Carbons Services and JBS&G, July 2017. Adelaide: South Australia.

M

- MDBA (2011). *Acid Sulphate Soils in the Murray-Darling Basin*. MDBA Publication No. 147/11. Canberra: Murray-Darling Basin Authority.
- MDBA (2020). *Lower Murray*. Accessed at <https://www.mdba.gov.au/water-management/catchments/lower-murray>.

- MDBA (2021). *Flow to South Australia (Calculated)*. Murray-Darling Basin Authority. Accessed at <https://riverdata.mdba.gov.au/flow-south-australia-calculated>.
- Menkhorst P, Rogers D, Clarke R, Davies J, Marsack P and Franklin K (2017). *The Australian Bird Guide*. CSIRO Publishing Australia.
- Moritz KN and Bickerton DC (2010) *Recovery Plan for the Peep Hill hop-bush Dodonaea subglandulifera 2010*. Report to the Recovery Planning and Implementation Section, Australian Government Department of the Environment, Water, Heritage and the Arts, Canberra. Accessed at <http://www.environment.gov.au/biodiversity/threatened/recovery-plans/national-recovery-plan-peep-hill-hop-bush-dodonaea-subglandulifera>
- ## N
- National Malleefowl Recovery Team (2019). *National malleefowl monitoring manual*. Edition 2019_1. Accessed at <https://www.nationalmalleefowl.com.au/resources/library/>.
- Nature Advisory (2021). *Project Energy Connect: Threatened Mallee Birds*. Prepared for JBS&G and Project Energy Connect. Report No. 19197 (2.1).
- NEPC (2016). *National Environment Protection (Ambient Air Quality) Measure as amended*. National Environment Protection Council.
- Newall PR, Lloyd LN, Gell PA and Walker KF (2009). *Ecological Character Description for the Riverland Ramsar Site*. Lloyd Environmental Pty Ltd Report (Project No: LE0739) to Department for Environment and Heritage, South Australia.
- Ngadjuri (2016). *Ngadjuri Nation website*. Accessed at <http://www.ngadjuri.com.au/>.
- NNTT (2012a). *Extract from Register of Indigenous Land Use Agreements*. Accessed at <http://www.nntt.gov.au/searchRegApps/NativeTitleRegisters/ILUA%20Register/2011/SI2011.025/ILUAREgisterExport.pdf>.
- NNTT (2012b). *Extract from the Register of Native Title Claims. Ngadjuri Nation #2 Native Title Claim (Ngadjuri Nation #2)*. National Native Title Tribunal. Accessed at http://www.nntt.gov.au/searchRegApps/NativeTitleRegisters/RNTC%20Extracts/SC2011_002/RNTCEXtract_SC2011_002.pdf.
- NNTT (2011). *Register Extract, Turner v State of South Australia*. Accessed at http://www.nntt.gov.au/searchRegApps/NativeTitleRegisters/NNTR%20Extracts/SCD2011_002/NNTRExtract_SCD2011_002.pdf.
- Northstar Air Quality (2021). *Air Quality Impact Assessment & Greenhouse Gas Assessment*. Prepared by Northstar Air Quality for Project EnergyConnect Transmission Line, South Australia, Report 19.1065.FR2V1. Appended to this report.
- NRHA (2014). *Alcohol use in rural Australia*. National Rural Health Alliance Ltd. Accessed at <https://ruralhealth.org.au/sites/default/files/publications/nrha-factsheet-alcohol.pdf>.
- NRHA (2016). *Smoking*. National Rural Health Alliance Ltd. Accessed at <https://ruralhealth.org.au/infographics/smoking>
- NSW OEH (2018) *Birds in wetlands*. Sydney: Office of Environment and Heritage. Accessed at: <https://www.environment.nsw.gov.au/topics/water/wetlands/plants-and-animals-in-wetlands/birds>.
- NVC (2020a). *Guide for applications to clear native vegetation under the Native Vegetation Act 1991 and Native Vegetation Regulations 2017*. Native Vegetation Council. Adelaide: Natural Resources for Native Vegetation Council.

- NVC (2020b). *Native Vegetation Council (NVC) Bushland Assessment Manual*. Adelaide: Natural Resources for Native Vegetation Council.
- NVC (2020c). *Policy for a Significant Environmental Benefit under the Native Vegetation Act 1991 and the Native Vegetation Regulations 2017 (SEB Policy)*. Adelaide: Natural Resources for Native Vegetation Council.
- NVC (2020d). *Guide for calculating a Significant Environmental Benefit under the Native Vegetation Act 1991 and Native Vegetation Regulations 2017*. Adelaide: Natural Resources for Native Vegetation Council.

O

- OnProperty (2020). *What is a Good Vacancy Rate in Australia?* Accessed at <https://onproperty.com.au/what-is-a-good-vacancy-rate/>.
- Ortega, CP (2012). *Effects of noise pollution on birds: A brief review of our knowledge*. Ornithological Monographs, vol. 74: 6-22. <https://doi.org/10.1525/om.2012.74.1.6>. Accessed at <https://www.jstor.org/stable/10.1525/om.2012.74.1.6?seq=1>.
- Owens, H and Graham, A (eds.) (2009). *2014 Census of South Australian Vertebrates, 4th Edition*. Department of Environment and Natural Resources, South Australia and South Australian Museum. eBook (updated 2014). Accessed at https://www.environment.sa.gov.au/topics/Science/Information_data/census-of-sa-vertebrates.

P

- PBC (n.d.). *The River Murray and Mallee Aboriginal Corporation RNTBC*. Prescribed Body Corporate. Accessed at <https://nativetitle.org.au/find/pbc/7494>.
- Penney DP (2016). *Non-prescribed Surface Water Resources Assessment South Australian Murray-Darling Basin Natural Resources Management Region*. DEWNR Technical report 2016/08. Adelaide: Department of Environment, Water and Natural Resources.
- PHIDU (2019). *Social Health Atlas of Australia*. Public Health Information Development Unit. Accessed at <http://phidu.torrens.edu.au/social-health-atlases/data>.
- Phytophthora Technical Group (2006). *Phytophthora Management Guidelines. 2nd Edition*. Prepared by DEH, PIRSA, DTEI, Adelaide: Landscape South Australia. Accessed at <https://www.landscape.sa.gov.au/ki/plants-and-animals/pest-plants/phytophthora>.
- PIRSA (2020). *Crop and Pasture Report South Australia 2020–21 Winter Crop Performance*. Primary Industries and Regions SA. Accessed at https://www.pir.sa.gov.au/primary_industry/crops_and_pastures/crop_and_pasture_reports/crop_and_pasture_reports_archive.

Q

R

- RDAMR (2018). *Our Region*. Regional Development Australia Murraylands & Riverland. Accessed at <https://rdamr.com.au/information/our-region/>.
- Resonate (2021). *Environmental Noise Impact Assessment*. Prepared by Resonate for Project EnergyConnect Transmission Line, South Australia, Report A190079RP1, Revision D. Appended to this report.

- Robertstown Solar (2019). *Project Information*. Accessed at <https://www.robertstownsolar.com.au/>.
- Robertson MA and Clarke A (2012). *Recovery Plan for Lachnagrostis limitanea (Spalding Blown Grass)*. Adelaide: Department of Environment, Water and Natural Resources. Accessed at <http://www.environment.gov.au/resource/recovery-plan-lachnagrostis-limitanea-spalding-blown-grass>. In effect under the EPBC Act from 30-Jan-2014 as *Lachnagrostis limitanea*.
- RPS Aquaterra (2012). *Chowilla Model 2012*. Prepared for the Department of Water SA, May 2012.

S

- SA CES (2012). *Regional Development Australia Murraylands and Riverland*. South Australian Centre for Economic Studies. University of Adelaide and Flinders University, May 2012.
- SAMDBNRMB (2009). *Regional NRM Plan; Volume 2: State of the Region*. South Australian Murray-Darling Basin Natural Resources Management Board.
- SAMDBNRM (2015). *SA Murray Darling Basin Natural Resources Management Plan*. South Australian Murray-Darling Basin Natural Resources Management Board. January 2015.
- SASCC (2020). *Seeds of South Australia*. Botanic Gardens of South Australia. Adelaide: Department for Environment and Heritage. Accessed at <https://spapps.environment.sa.gov.au/SeedsOfSA/home.html>.
- SATC (2015). *Riverland Tourism Performance 2012 – 2014*. Available in Riverland Tourism Plan 2020, South Australian Tourism Commission. Accessed at [https://www.destinationriverland.org.au/sites/dr5/media/pdf/dr_tourism_plan_2020-\(1\).pdf](https://www.destinationriverland.org.au/sites/dr5/media/pdf/dr_tourism_plan_2020-(1).pdf).
- SATC (2020a). *Riverland Regional Profile. Results for Year Ending December 2019* - Released: May 2020. South Australian Tourism Commission. Accessed at <https://tourism.sa.gov.au/regions/riverland>.
- SATC (2020b). *Chowilla Game reserve and Regional Reserve*. South Australian Tourism Commission. Accessed at <https://southaustralia.com/products/riverland/attraction/chowilla-game-reserve-and-regional-reserve>
- SBCC (2021). *South Australia State Bushfire Management Plan 2021-2025*. State Bushfire Coordination Committee for South Australia. Accessed at <https://www.cfs.sa.gov.au/prepare-for-a-fire/bushfire-management-planning/bushfire-management-area-plans/>
- Simpson K and Day N (2010). *Field Guide to the Birds of Australia*. 8th edition, revised and updated.
- SKM (2002). *Proposed South Australia – New South Wales Interconnector (SNI). Environmental Impact Statement*. Sinclair Knight Merz.
- SoE (2018). *NSW State of the Environment 2018*. State of New South Wales and the Environment Protection Authority 2018.
- SPC (2019a). *State Planning Policies for South Australia. Version 1.1*. Prepared by the State Planning Commission on behalf of the minister for Planning. Gazetted 23 May 2019.
- SPC (2019b). *State Planning Policies for South Australia - Special Legislative Schemes. Version 1*. Prepared by Minister for Planning. Published 27 May 2019.
- SQM Research (2021). *Residential Vacancy Rates, Region: Murraylands*. Accessed at https://sqmresearch.com.au/graph_vacancy.php?sfx=®ion=sa%3A%3AMurraylands&t=1.
- State Library SA (2010a). *European settlement: Soldier Settlement*. State Library of South Australia. Accessed at <http://www.samemory.sa.gov.au/site/page.cfm?u=1328>.
- State Library SA(2010b). *European settlement along the Murray*. State Library of South Australia. Accessed at <https://www.samemory.sa.gov.au/site/page.cfm?u=1327>

Swanwick C (2013). *Guidelines for Landscape and Visual Impact Assessment*. 3rd edition. United Kingdom: Landscape Institute and Institute of Environmental Management and Assessment.

T

TransGrid (2018). *Energy connected – 2017/18 annual review*. Accessed at <https://www.transgrid.com.au/publications>.

TransGrid (2020). *Leading the energy transition – FY20 annual review*. Accessed at <https://www.transgrid.com.au/publications>.

Transport Authorities Greenhouse Group (2013). *Greenhouse Gas Assessment Workbook for Road Projects*.

TRB (2010). *Highway Capacity Manual*. Volume 2. United States: Transportation Research Board.

TSSC (2016b). *Conservation Advice Manorina melanotis black-eared miner*. Threatened Species Scientific Committee. Canberra: Department of the Environment. Accessed at <http://www.environment.gov.au/biodiversity/threatened/species/pubs/449-conservation-advice-15072016.pdf>.

U

URS and URPS (2013). *Murray and Mallee LDA Regional Public Health Plan 2013-2018*.

V

Vanclay F, Esteves AM, Aucamp I and Franks D (2015). *Social Impact Assessment: Guidance for assessing and managing the social impacts of projects*. Fargo ND: International Association for Impact Assessment.

W

Wallace TA, Furst D, Upadhyay S and Daly R (2015). *Science to inform operational decisions of major environmental infrastructure on the Chowilla Floodplain and other regulated floodplains in the SA River Murray*. Goyder Institute for Water Research Technical Report Series. No. 15/18, Adelaide, South Australia.

WaterConnect (2019). *River Murray Inundation Mapping*. Accessed at <https://www.waterconnect.sa.gov.au/Systems/RMIM/SitePages/Home.aspx>.

WaterConnect (2020). *Drillholes*. GIS layer. Accessed at <https://www.waterconnect.sa.gov.au>.

Western Australian Planning Commission (2007). *Visual Landscape Planning in Western Australia*. Accessed at <https://www.dplh.wa.gov.au/policy-and-legislation/state-planning-framework/factsheets,-manuals-and-guidelines/visual-landscape-planning-in-western-australia>.

Wszolek T (2006). *Uncertainty of LDEN calculations for corona noise from ultra high voltage power lines using reference methods*. Archives of Acoustics, 31(4)(Supplement): 303-310.

X

Y

Yasue M (2006). *Environmental factors and spatial scale influence shorebirds' responses to human disturbance*. Biological Conservation, vol. 128(1): 47-54.

Yasue M, Quinn JL and Cresswell W (2003). *Multiple effects of weather on the starvation and predation risk trade-off in choice of feeding location in Redshanks*, Functional Ecology, vol. 17(6): 727-736.

Z