

Planned out of hours work

Newcastle Inner City Bypass – Rankin Park to Jesmond

April 2024



Australian Government
BUILDING AUSTRALIA



Transport for NSW acknowledges the Awabakal people of the Awabakal Nation as the Traditional Custodians of the lands on which we work and pays respect to Elders past and present.

The Australian and NSW governments are funding the Rankin Park to Jesmond section of the Newcastle Inner City Bypass.

Work is continuing on the 3.4 kilometre section of the bypass. Transport for NSW has engaged Fulton Hogan to finalise the design and construct this section of the bypass.

What work are we doing?

We will be carrying out general road and bridge construction including concrete pouring of structural elements and piling. Our continuing work at Jesmond also includes drainage work to install a new culvert and pipe network, utilities relocations including electrical works and permanent street lighting, road pavement construction and modifications to the traffic control systems to adjust traffic flow.

When and where we'll be working

The work will occur along the length of the bypass from the southern interchange on Lookout Road and McCaffrey Drive at New Lambton Heights, to the northern interchange on Newcastle Road and Main Road, Jesmond, with additional works to occur in Jesmond Park and near the John Hunter Hospital.

Day work will be carried out **Monday to Friday** between **7am** and **6pm** and **Saturday** from **8am** to **5pm**. No work will be carried out on public holidays.

Low impact controlled blasting will continue to be carried out about 400 metres north west of the John Hunter Hospital **during day work in April and May**. These dates are subject to change, please check our online portal for up-to-date information. For our fact sheet and more information on blasting, scan the QR code or visit our [project webpage](#).

Work will be carried out in or next to live traffic lanes or require the night-time isolation of services, so out of hours is the safest way to conduct this work.

Night work will be carried out from **Sunday** to **Thursday** between **6pm** and **7am**.

The northbound right turn lane from Lookout Road providing access to Blackbutt Reserve will be permanently closed to motorists from April.

What will this mean for you?

During night work there will be traffic control on site, temporary lane closures and machinery operating adjacent to or in the road lanes.

These will move locations, please take care, keep to the signposted speed limits and follow the direction of traffic controllers.

We work outside standard construction hours to:

- Improve safety by minimising the interactions between road users, pedestrians and workers
- Minimise delays and journey times for motorists and businesses.

Managing our impacts

There will be machinery and other plant and equipment working in different areas throughout the night work. The machinery and equipment generate light, noise, and vibration. We will make every effort to minimise these impacts by:

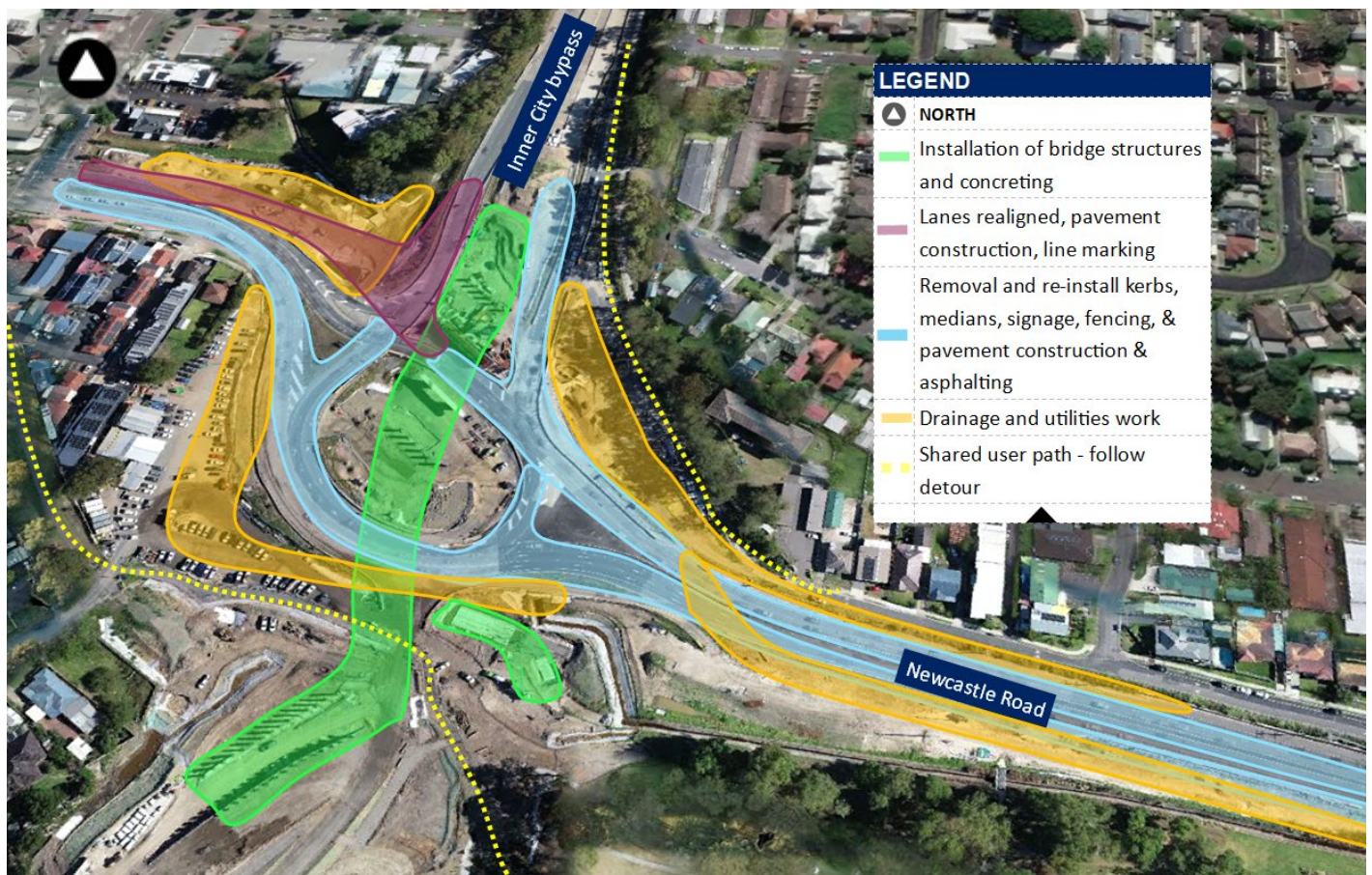
- Turning off machinery and vehicles when not in use
- Using non-tonal reversing alarms
- Positioning of machines and directing temporary lighting down and away from homes
- Planning activities close to residents within standard construction hours and scheduling noisy activities earlier in the night, where possible
- Monitoring noise to manage any potential impacts and adjusting our work, where possible.



Noise levels will be moderate. Directly affected residents will be contacted and advised of the likely impact and what we are doing to minimise disruption during the work.

Details of planned out of hours work at Jesmond – Monday 15 April to Wednesday 15 May

Out of hours work activities	Equipment
<ul style="list-style-type: none"> Lane closures near project area Utility work including power, street lighting, and traffic control signals Installation of road pavement, kerbs, medians, and footpaths, retaining walls, road signage, street furniture etc Drainage works including demolishing existing and installing stormwater pits, stormwater pipes and box culverts, connection to services Installation of temporary work and support structures to facilitate and protect new installations or excavations Removing concrete kerbs, medians, islands, structural signage and pavements Pavement construction, temporary line marking and removal and asphaltting Service investigation using non-destructive digging Barrier placement including relocation and mechanical anchoring Trucks moving equipment between locations including deliveries of plant and materials, backfilling Structural concrete pours and bridgeworks Delivery and installation of precast structures Loading, hauling, placing and compacting soils Street cleaning and dust suppression, when required. 	<ul style="list-style-type: none"> Traffic control systems modifications including set up and pack up Tracked and wheeled excavators Jackhammer, hammer drill, concrete saw Trucks, including rigids, watercarts, sweeper Mobile cranes including frannas Concrete pumps, concrete trucks, rollers Vacuum truck for non-destructive digging Backhoe, bobcat, skid-steer loader, mechanical anchoring Seal and aggregate trucks, rollers Compaction equipment and concrete vibrators Line marking truck, removal machine including a grinder and/or water blaster Asphalt paver, profiler, and support vehicles CCTV, survey and light vehicles Lighting towers and pumps for the work area Cranes and oversized vehicles for deliveries Elevated work platforms Kerb machines and concrete deliveries Trenchless underground boring (horizontal directional drilling rig).



This is an artist impression only and is not to scale.



Details of planned work at New Lambton Heights – Monday 15 April to Wednesday 15 May

Out of hours work activities

- Lane closures near project area, traffic control set up and pack up
- Utility work including power, street lighting, and traffic control signals
- Installation of road pavement, kerbs, medians, and footpaths, retaining walls, road signage, street furniture etc
- Drainage works including demolishing existing and installing stormwater pits, stormwater pipes and box culverts, connection to services
- Installation of temporary work and support structures to facilitate and protect new installations or excavations
- Removing concrete kerbs, medians, islands, structural signage and pavements
- Pavement construction, temporary line marking and removal and asphaltting
- Service investigation using non-destructive digging, barrier placement including relocation and mechanical anchoring
- Trucks moving equipment between locations including deliveries of plant and materials
- Concrete pours, bridgeworks and spray concrete on embankments (shotcreting)
- Delivery and installation of precast structures
- Loading, hauling, placing, and compacting soils
- Street cleaning and dust suppression, when required.

Equipment

- Traffic control systems modifications including set up and pack up
- Tracked and wheeled excavators
- Jackhammer, hammer drill, concrete saw
- Trucks, including rigids, watercarts, sweeper
- Mobile cranes including frannas
- Concrete pumps, concrete trucks, water pumps and drill rig
- Vacuum truck for non-destructive digging
- Backhoe, bobcat, skid-steer loader, roller
- Seal and aggregate trucks, rollers
- Compaction equipment and concrete vibrators, lighting towers and pumps for the work area
- Line marking truck, removal machine including a grinder and/or water blaster
- Asphalt paver, profiler, and support vehicles
- CCTV, survey and light vehicles, pole borer lifter and borer machine.
- Cranes delivered, installed, used and dismantled, and oversized vehicles for deliveries
- Elevated work platforms, kerb machines and concrete deliveries
- Trenchless underground boring (horizontal directional drilling rig).



This is an artist impression only and is not to scale.



For more information about the project visit nswroads.work/rp2j.

Thank you for your patience during this important work.

Scan the QR code to visit our interactive portal and learn more about the project.



Planned out of hours work from April to June

Day work will continue to be carried out between **7am** and **6pm** from **Monday to Friday**, and **Saturday** between **8am** and **5pm**.

Night work will be required between **6pm** and **7am** from **Sunday to Thursday**, weather permitting. No work will be carried out on public holidays.

Night work Activity – Sunday to Thursday nights	Equipment
<ul style="list-style-type: none"> • Install bridge wall casings, complete structural concrete pours south of McCaffrey Drive, in preparation for installation of bridge spans on top of the walls (pictured) later in the year. McCaffrey Drive will realign in the future to go over the top of this bridge structure. • Delivery and installation of 750 tonne crane, concrete structures - including 27 super T bridge girders at Jesmond at the end of May. Precast concrete structures will span above/across Jesmond roundabout • Drainage work including demolishing existing and installing stormwater pits, stormwater pipes and box culverts, connection to services at Jesmond and Rankin Park • Delivery and installation of precast structures, also spraying concrete on embankments • Temporary lane closures, lane realignment on the Jesmond roundabout in preparation for future traffic switch and temporary lane closures, lane realignment on Lookout Road. This will include removal and installation of line road pavements, kerbs, footpaths, medians, retaining walls, road signage, street furniture, lighting, line marking and asphaltting • Utility work, service investigations, removal and installation of power, street lighting, water, communication lines and traffic control signals • Start building piling structures of the pedestrian overpass near Jesmond Park • Fencing installation, modifications, installing site accesses, car parks, vegetation removal and clearing activities, surveying work. 	<ul style="list-style-type: none"> • Concrete works, including deliveries, concrete tools, pumping and placement • Excavators, hammers, tipplers, rollers, compactors, rollers graders, dozers, bobcats, watercarts, dump trucks, • Road kerb machines, road profilers, concrete saws, asphalt pavers, profilers, sealing equipment • Traffic control, line marking truck, grinder, water blaster • Carpentry, concrete, and electric tools, chainsaws, bore hole drills • Franna cranes, hiab, elevated work platforms, vacuum excavation • Survey equipment, trucks, and light vehicles • Lighting towers and generators • Asphalt pavers, profilers, sealing equipment • Pumps, dewatering equipment, under boring machines • Shoring of excavations including sheet piling, shoring boxes, and steel plates • Cranes, piling rigs, and oversized vehicles for deliveries.

Contact us



If you would like to provide feedback, or have any questions or complaints, please contact our 24-hour Construction Response Line **1800 818 433**



RP2JCommunity@fultonhogan.com.au



nswroads.work/rp2j



For the latest traffic updates:

Call 132 701, visit livetraffic.com or download the app Live Traffic NSW



Interpreter service

For languages other than English call 131 450

www.transport.nsw.gov.au/privacy-statement#Your_Privacy

How we measure noise (in dBA)

