

# Canal to Creek

WestConnex

Transurban

THE WESTCONNEX PUBLIC ART PROGRAM

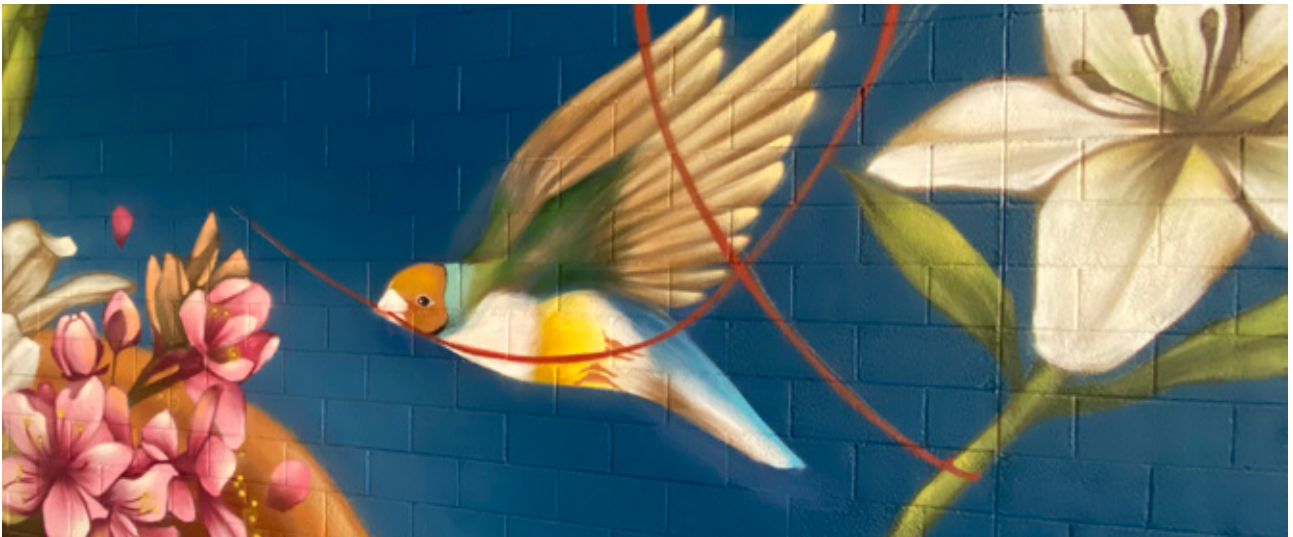


VADEA  
NSW

VISUAL ARTS & DESIGN  
EDUCATORS ASSOCIATION

# CHRISTINA HUYNH AKA 'STYNA'

FANTASTIC WORLDS | STAGE 4 WORKSHEET



Christina Huynh  
*Fantastic Worlds*

## CRITICAL AND HISTORICAL INVESTIGATION

**VOCABULARY** - Installation, narrative, wayfaring, heritage, conservation, diversity, mural, indigenous, public art, focal point, illustration, figurative, site-specific, colour palette, symbol, embellishment, motif



## CONCEPTUAL FRAMEWORK - ARTWORK

**Fantastic Worlds** is one of **18 public artworks** produced for the [WestConnex Public Art Program - Canal to Creek](#) in Sydney by Western Sydney-based artists Christina Huynh who paints under the name of 'Styna'.

**Fantastic Worlds** is a **narrative** about **wayfaring (traveling), heritage, conservation and diversity**. The **mural** is a story which can be read like a book by audiences who move through the underpass, but they can read it in any particular order. **There are several signs, symbols and motifs in the artwork which help us understand the story being told.**



The artwork is a story about a flock of beautiful Gouldian Finches. Native to Australia, the birds have traveled the world to collect **indigenous** flowers from different countries including Greece, Lebanon, China and Australia to place within pottery vases. The work is a **celebration of diversity**.

For the artist, Christina Huynh, art is a chance to listen to the quiet moments in the hustle and bustle of everyday life. She uses art to tell a story, to evoke a thought or feeling whether it lasts a moment or a lifetime.

**Discuss:** What does Christina Huynh consider the role of art to be? Do you share the same view? What other reasons for making art could artists have?

The artwork and site:

Not only is **Fantastic Worlds** a story about the world we live in, the artwork is also **site specific** to the Kingsgrove area in Sydney's West. Based on what you can see in the work and what you know about the work, **what do you think this artwork is saying about the site it is located?** Write your thoughts below. Include a definition of the term **site-specific**.

Site specific definition:

---



---



---



What I think this work is saying about the area it has been located...

---



---



---



---



## ART PRACTICE:

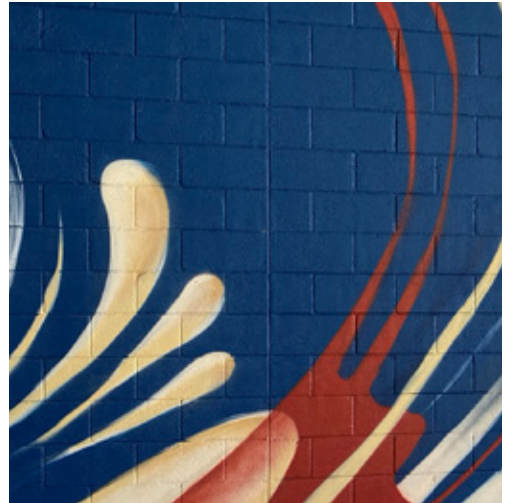
**Figurative themes** always seem to find their way into the pages of my sketchbook. As one that draws (and daydreams) I am often inspired by travel to both new and old places. I find interest in **heritage and storytelling** and have used art as a way to **document** my sights and navigate through at times a chaotic and confusing world.

*Before acrylic and aerosol, my medium of choice is watercolour, pen and ink - I love that watercolour and aerosol are from opposite worlds: painting light to dark in watercolour and dark to light in aerosol. The two mediums are both difficult and spontaneous yet capable of expressing movement and momentum beautifully in their own way -*

By Christina Huynh

## CRITICAL AND HISTORICAL INVESTIGATION

Discuss: What do the artist quotes tell us about the artmaking practice of Christina Huynh?



## THE FRAMES

### CULTURAL AND STRUCTURAL FRAMES:

Make small sketches of the symbols or motifs you see in the work, including the birds, the pots, the flowers and the decorative line work. Write a short description next to each sketch to explain the symbolic and cultural meaning of each of your sketches:

Sign/symbol/motif sketch - draw below			
Symbolic meaning of each drawing - write meaning below.			

## CONCEPTUAL FRAMEWORK

### Written task (200-300 words)

- Imagine you are walking through the underpass and you see *Fantastic Worlds* - you want to share your experience by writing a review for the local paper. Write a review that includes the following:
  - The name of the artist and the artwork, and a brief description of the visual qualities of the work.
  - An explanation of your own experience of the work physically and emotionally.
  - A brief statement of how the work has contributed to the site in which it has been located.



## ARTMAKING ACTIVITY

### Origami Symbolism

1. Research: What is origami?
2. As a class or in small groups in your Visual Arts diaries, research the symbolism within the tradition of origami. For example, the crane is a symbol of peace, happiness, and long life.
3. Select a number of symbols to construct as origami forms.
4. Install them in a site that might normally be neglected or overlooked



### EXTENSION TASK

1. Research examples of site-specific installations based on a theme of place, site and environment. Examples might include Andy Goldsworthy, Olafur Eliasson, and Random International.
2. Design a site-specific installation which incorporates symbolic origami forms. Think about the location, the scale, meaning being communicated and audience response/interaction.
3. Create and photograph your installation on site.

## ARTMAKING EXTENSION ACTIVITY

### Site Specific Mural Design

Complete the following exercises in your Visual Arts diary:

- Imagine you have been asked to create a mural for a site you live in or travel through to go to school. Write down a few stories about the area.
- The image is a sketch from a page from Christina Huynh's sketchbook. She has created these sketches to plan the symbols for her mural. Sketch imagery, symbols and motifs for the area you are designing for your mural. Write a brief description about each of these symbols and motifs. How can you link these images symbols and motifs together so that audiences may understand the narrative you are telling about the site you have chosen?
- Draft a design for your mural. Discuss the possibilities of painting a mural in your local area. What are the steps you would consider to plan your mural?

