

Warringah Freeway Upgrade

Fact Sheet | June 2022



Cammeray main work temporary construction site

The NSW Government's vision for Sydney is one of an integrated road and public transport network that gives you the freedom to choose how and when you get around, no matter where you live and work.

The Western Harbour Tunnel and Warringah Freeway Upgrade is a major transport infrastructure project that will make it easier, faster and safer to get around Sydney. By creating a western bypass of the Sydney CBD, the Western Harbour Tunnel will take pressure off the Sydney Harbour Bridge, Sydney Harbour Tunnel, ANZAC Bridge and Western Distributor corridors to improve transport capacity in and around Sydney Harbour.

We are establishing the main work temporary construction site

Work on the temporary construction site at Cammeray golf course is now underway and is planned to be ready for use in about September 2022, weather permitting.

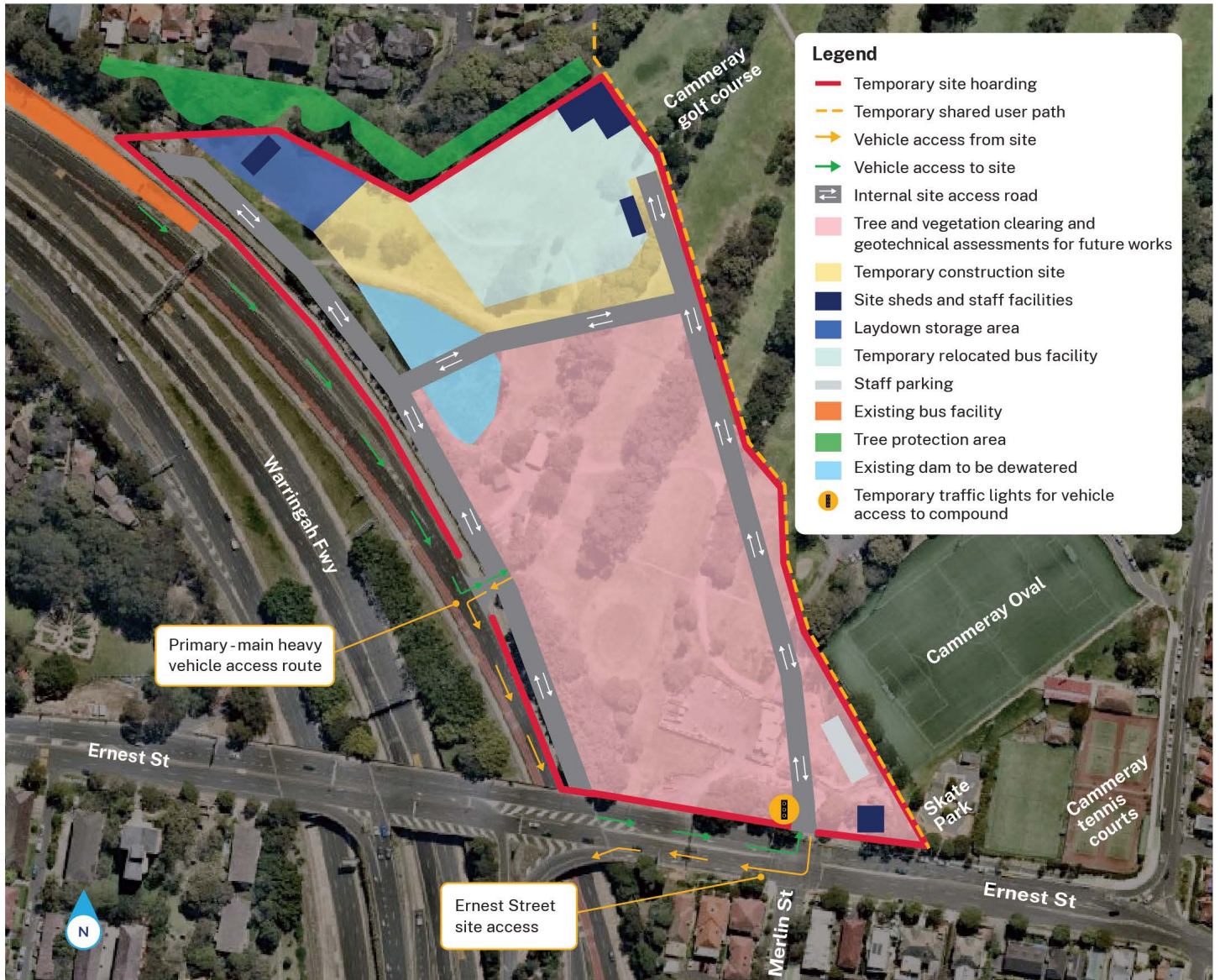
This temporary construction site is part of the Warringah Freeway Upgrade, and we expect to be working out of this site until 2026. Once the upgrade is complete, the site will continue to be used for construction of the Western Harbour Tunnel as well as Beaches Link (subject to approval).

Work began in May

While we build the temporary construction site you will see us:

- carrying out service and utility investigations
- installing site fencing and hoarding around the site boundary to provide visual and noise screening and to safely secure the site
- clearing trees and vegetation, following assessment by an arborist and ecologist
- installing environmental erosion and sediment management controls, including temporary sediment storage basins
- removing existing structures within the site including golf course maintenance sheds and pump station, and removing the stormwater storage dam
- carrying out earthworks including site levelling, compacting and piling work in preparation for installing site facilities and other general construction activities
- building traffic management safety controls for vehicles moving inside the site, including installing concrete safety barriers
- closing the shared user path through the site with detours in place via the new temporary shared user path
- building the vehicle site access from the Warringah Freeway, and upgrading and installing traffic signals at the Ernest Street and Merlin Street intersection to allow safe access from Ernest Street
- building storage areas for vehicles and equipment, site offices and staff facilities
- installing a temporary bus laydown facility at the northern end of the site
- installing service and utility connections to the site

Cammeray main work temporary construction site



Cammeray temporary construction site (indicative layout)

The Cammeray temporary construction site will provide construction support facilities for upcoming work including:

- bridgework
- general road work including widening of existing roads and building new pavement
- upgrades to local roads and intersections
- future construction support site for the Western Harbour Tunnel as well as Beaches Link (pending project approval) contractors.

Cammeray main work temporary construction site

When will we be working

Most of our work will be carried out during standard construction hours **Mondays to Fridays 7am to 6pm and Saturdays from 8am to 6pm.**

To maintain safety for road users and workers, and keep people moving during peak times, work outside of standard construction hours will also need to be completed. This work includes survey investigations, service and utility installation and relocations.

The community will be notified ahead of any out of hours work. We will keep working closely with affected residents to minimise our impacts, wherever possible.

Reducing the impact to you

Our work activities will require the use of machinery that generates noise, light spill and vibration. We will need to use scanning equipment, excavators, piling equipment, mobile cranes, concrete saws, powered hand tools, jackhammers, compaction equipment, mulchers, core drills, lighting towers, vacuum trucks, heavy vehicles, traffic controls and light vehicles.

To minimise the impact of this work we will:

- turn off machinery when not in use
- install hoarding for visual screening and noise attenuation around our temporary construction site
- use acoustic blankets/shields around equipment to minimise noise where feasible
- when working at night, where feasible, direct temporary lighting down and away from houses
- plan activities close to residents to be carried out during standard construction hours or early evening, where possible
- fit equipment with devices to minimise noise, particularly non-tonal reversing beepers
- monitor noise periodically so we can manage any potential impacts and adjust our work as required
- schedule noisiest works to take place before 11:00pm, where possible
- implement a minimum of one hour's respite for highly intensive noise work, and not undertake this work for periods longer than three hours
- We will also work in accordance with the Project's Minister's Conditions of Approval (MCoAs) for out of hours work, whereby no more than two consecutive nights per week, three non-consecutive nights per week or 10 nights per month will be exceeded.

Accessing the site

Access to the site will be mainly via the Warringah Freeway. We plan to complete work on the direct access off the freeway by December 2022 and this access will be for construction vehicles only.



We need to remove the existing bus layover facility on the Warringah Freeway Miller Street on ramp so we can construct the direct access from the freeway. We will therefore establish a temporary bus layover facility inside the temporary construction site (refer to previous map).

While we are building the freeway access, construction vehicles will use the existing entry at Ernest Street. The Ernest Street and Merlin Street intersection is being upgraded and new traffic lights installed. This will take about three months to complete, weather permitting. Current functionality of the intersection will remain the same but also include the addition of access into the site for construction vehicles only.

The expected maximum vehicle movements to and from the Warringah Freeway Upgrade temporary construction site per day are shown in the graph below. The actual vehicle numbers will vary depending on where we are in the construction program. The number of vehicle movements to and from site may change when construction of the Western Harbour Tunnel commences.



Cammeray main work temporary construction site

Activity	Approximate light vehicle movements per movements per day* 	Approximate heavy vehicle movements per day* 
During site establishment via Ernest Street (June to September 2022 approximately)	100	280
Operation of the site ongoing via the Warringah Freeway and Ernest Street (October 2022 to 2026 approximately)	865	40

*Please note: one vehicle entering and then exiting the site is counted as two movements

To minimise our impacts on residents and motorists, access to the temporary construction site will be via major arterial roads and the freeway wherever possible. The number of vehicle movements will change when Western Harbour Tunnel construction commences.

Managing pedestrian and cyclist access

Pedestrian and cyclist access will be temporarily changed at various times to allow work to be carried out safely. Changes include:

- Closure of the existing shared user path through the site and cycleway connection of the freeway into the golf course. Access through the golf course will be maintained via the new temporary shared user path.
- Pedestrians and cyclists may be momentarily stopped by traffic controllers or required to temporarily dismount for safety reasons while we are working at the Ernest and Merlin Street intersection

Future use of the temporary construction site

This temporary construction site will be in place until we have finished using it for the Warringah Freeway Upgrade, Western Harbour Tunnel and Beaches Link (pending approval) projects.

Transport recognises parks and open spaces play an essential role in the health and wellbeing of neighbouring communities. The Warringah Freeway will be widened slightly at this location and a portion of the golf course is needed for some permanent motorway facilities, including the electrical substations and fan rooms for the Western Harbour Tunnel. Using this site has enabled us to minimise the number of residential properties we needed to acquire for the project.

We will be returning the sites we only need temporarily during construction back to the community when we have finished work. We will work with the community and stakeholders to determine what the future sites will look like as part of the development and public display of the Project's Place, Design and Landscape Plan (PDLP). If you are interested in being a part of this process, please contact the project team and register for updates.

Vegetation and tree removal

We understand the importance of vegetation and trees to the local community. We will have qualified ecologists and arborists carry out further inspections before any trees and vegetation are removed.

We are committed to replacing trees and plantings at a ratio of 2:1 and to delivering a future increase in tree canopy. This will be done in consultation with North Sydney Council and in accordance with our conditions of approval. We are continuing to explore potential opportunities to start replanting trees and vegetation progressively during construction.

We will also continue to work in collaboration with Council and the community to identify opportunities to use a variety of sizes and maturity of plantings.

For more information on the areas where the project has approval to clear trees and vegetation, please refer to our 'Vegetation and Tree removal – frequently asked questions', available online at nswroads.work/wfuportal.

Getting to know the community survey

We are continuing to build our knowledge of your community and surrounding local businesses to help us identify further ways to minimise impacts during construction. We would like to invite you to participate in a short survey so we have a greater understanding of you and your circumstances.

The information from the survey will be collated and used to identify themes and trends which we will consider when planning our work. It will also help us understand if you have a unique situation we should be aware of. The survey is voluntary and you may choose to only complete parts of it. It should take about five minutes to complete.

If you have any questions relating to this survey or generally regarding the Warringah Freeway Upgrade, you can visit our portal for the latest information at nswroads.work/wfuportal or contact our team at whtbl@transport.nsw.gov.au or at **1800 931 189**.

Complete the survey



To complete the survey, please use the QR code below or visit nswroads.work/wfucommunitysurvey

Stay in touch with us



1800 931 189



whtbl@transport.nsw.gov.au



nswroads.work/wfuportal



Customer feedback
Transport for NSW, Locked Bag
928 North Sydney NSW 2059



Making a complaint about our work

To make an inquiry or a complaint about the project, you can call our community information line, which is available 24 hours a day and is attended during the project operation hours. Inquiries and complaints may also be received by the project email and by post.



If you need help understanding this information, please contact the Translating and Interpreting Service on **131 450** and ask them to call us on **1800 931 189**.