

M6 Stage 1

Our work to connect communities

Community Update | Spring 2023



Thank you for your patience as construction continues on M6 Stage 1

Tunnel and portal update

An underground transformation is happening at our three tunnelling and construction sites as the M6 Stage 1 takes shape to connect the M8 at Arncliffe to President Avenue in Kogarah.

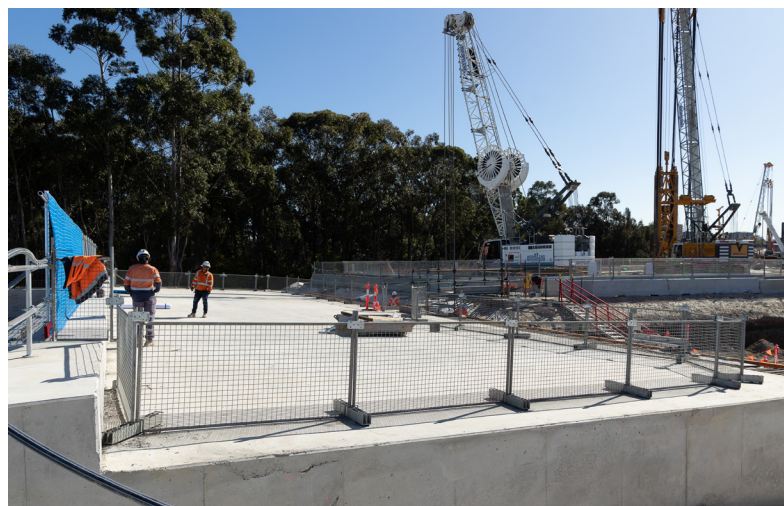
We recently completed 40 per cent of tunnelling and welcomed four new, very large machines (known as roadheaders) to excavate the main road tunnels, under Bay Street to Beach Street near Bicentennial Park.

Activities are also underway at our Arncliffe site. Seven roadheaders are working 24 hours a day, seven days a week from Marsh Street to Bay Street. From this site we are also installing services such as drainage in some sections of the tunnels. At the peak of construction, a total of 13 roadheaders will excavate the tunnels.

Complex construction is happening at Bicentennial Park, where we are building the entry and exit of the tunnel. More than 640 cubic metres of concrete, along with 182 tonnes of reinforcement have come together to form the first part of the tunnel roof. Wherever practical, materials are sourced locally, helping to support local jobs.



Tunnel portal roof pour at the Bicentennial Park site, July 2023



Tunnel portal roof at the Bicentennial Park site, August 2023



Head to our project portal or scan the QR code to see the completed tunnel alignment and learn more about our current activities.



Behind the scenes: digital tracking of spoil trucks

Excess soil and other waste materials are removed from site in spoil trucks. We use technology to track these trucks and record data on their movements.

This allows us to make sure our spoil trucks are using the correct routes so we can check community queries about truck movements.

The data captured by the software also plays an increasingly vital role in sustainability reporting. For example, a combination of intelligent earthworks data and off-site spoil data can be used to determine what percentage of materials removed from site are being reused.



Spoil management control room

Our team building your M6

We believe a diverse workforce creates a healthy place to work and produces great outcomes as we share skills and knowledge. As at the end of August 2023:

- 5%** of our trades workforce are women (against a target of 2%)
- 18%** of the workforce inducted on the project are from the local area
- 20%** of our trades workforce are apprentices
- 3%** of our workforce identify as Aboriginal & Torres Strait Islanders
- 82%** of the people inducted on the project are learning workers
- 16%** of the workforce are young people – upskilling for the future.

Continuous work over weekends

From September until mid-November, major road and utility upgrades are taking place along the Princes Highway at Kogarah, near President Avenue and also in the middle of President Avenue.

Due to the complexity of this work, the safest and quickest way to complete these activities is by working continuously from 8pm Friday evening until 5am Monday morning.

Any changes to the program due to weather will be communicated directly to the impacted residents, and also updated on our portal.

The first section of work is on the Princes Highway near President Avenue. It involves upgrading storm water drainage and restoring the road surface.

During each weekend of work, the Princes Highway will remain open in both directions but there will be some delays due to partial lane closures around our work area. Please allow extra travel time during these weekends and follow the direction of signage and traffic control.

Access to local businesses along the Princes Highway, President Avenue and West Botany Street will be maintained during our work. Support local businesses and shop local when you can.



Continuous weekend work site – Princes Highway near President Avenue

Powering community spirit

The Permanent Power Supply for the tunnel plays a crucial role in the M6 Stage 1 project. The high voltage cable will deliver a reliable source of power for lighting, ventilation, and operation of the new tunnels. The seven kilometre underground power supply will connect the Canterbury substation in Hansen Avenue, Earlwood, to the M6 Stage 1 Motorway Operations Complex at West Botany Street, Rockdale.

Residents along the permanent power construction route have been incredibly understanding of the necessity for these works, showing remarkable patience with our work crews and traffic controllers. Some residents have even gone the extra mile, providing refreshments, pizza, and coffee to our crews on colder days. This shows great community spirit and we extend our thanks to the residents for their kindness.

As at the end of August, we had completed over 43 per cent of the trenching on roads, including underbore works at Bardwell Valley Golf Course. This is great progress and puts us on schedule to complete laying the power cable by early 2024.



Permanent Power Supply work on Bryant Street, August 2023



Ribbon cutting to commemorate the artwork installation, August 2023

Students’ imaginations captured in art

M6 Stage 1 collaborated with the students from Brighton-Le-Sands Public School, inviting them to draw their vision for the future of Bicentennial Park. Their artwork has now come to life, produced into large panels that wrap the hoarding, creating a visually high impact piece of public art.

The uniquely designed hoarding is 1.2 metres high and runs for approximately 400 metres around the Bicentennial Park construction site; 200 metres along a public walkway connecting the school to West Botany Street and 200 metres down part of West Botany Street.

To celebrate the installation, we invited the students, current school leaders, and their families to attend a morning tea and unveiling ceremony. A fantastic way to commemorate the artwork which was enjoyed by all.



Students from Brighton-Le-Sands Public School with the artwork and during celebrations, August 2023

Engage with us!

Online drop-in session

We invite you to join us from the comfort of your home between **12.30pm and 1.00pm on Thursday 28 September 2023** for an online information session, where we will update you on progress of the M6 Stage 1 project. To register, or if you have any questions you would like to have answered, please email us and we will provide you the details about how to join online before the session. We really hope to see you there, your participation matters!

Meet our team

Our Community Information Centre is located at 142 President Avenue, Brighton-Le-Sands.

Come and meet the team to discuss any questions you may have, look at maps, artist impressions and learn more about the Project. We look forward to your visit.



Members of the team outside the Community Information Centre

Do you have a question?



If you have a question about our work, you can visit our frequently asked questions section on the portal to access the most up to date information including our upcoming weekend works this year. Otherwise, contact us using the details below.

Listening to you: community survey results

Our third community survey opened at the end of May and closed in early July.

Feedback showed that people were appreciative of our doorknocks and work notifications. Most respondents also expressed interest in the final M6 Stage 1 when it's completed.

Based on your feedback, the project team is committed to being accessible in the community, through more doorknocks and community events.

Our next community survey opens in November, please look out for it and share your views with us.

Tour the M6 Stage 1!

Have you ever wondered what happens on a major project construction site?

Register with us via email at info@M6Stage1.com.au for the opportunity to take a guided tour of our site! Please note, there are some safety considerations and restrictions in place. This opportunity is available on a first-in, first-served basis. If we receive significant interest, we will look to host additional tours in the future.

Contact us

If you have any questions or would like more information please contact our project team:



1800 789 297 24 hours a day



info@M6Stage1.com.au



nswroads.work/M6portal



Translating and interpreting service

If you need help understanding this information, please contact the Translating and Interpreting Service on **131 450** and ask them to call us on **1800 789 297**.