



Out of hours construction activities near Orchard Lane, Singleton

Singleton Bypass

July 2025



BUILDING AUSTRALIA



Transport for NSW acknowledges the Wonnarua/Wanaruah people as the Traditional Custodians of the lands on which we work and pays respect to Elders past and present.

As part of construction activities for the Singleton Bypass, bridge girders will be installed over the Great Northern Railway near Orchard Lane from **Tuesday 22 July to Friday 25 July 2025**. Subject to weather conditions, work may need to occur during non-standard construction hours over this four-day period.

What work are we doing?

The work will involve installing six girders on the bridge that crosses the Great Northern Railway near Orchard Lane. Each girder is 38 meters in length and weighs 83 tonnes.

The work activities have been assessed as having a moderate noise impact, with the following equipment to be used:

- Lighting towers and generators
- 600 tonne crawler crane
- Franna and Elevated Work Platforms
- Handheld tools and equipment
- Light vehicles

When and where we'll be working

We will be working within the project corridor during the Australian Rail Track Corporation (ARTC) possession period occurring at this same time. Work will be carried out near Orchard Lane, approximately two kilometres south of Singleton CBD.

Standard construction hours are **7am to 6pm, Monday to Friday and 7am to 1pm, Saturday**. For this bridge girder installation work to be completed during the ARTC possession period, we may need to work during the evening and night-time hours of **6pm to 7am** over the four-day period.

What will this mean for you?

You may notice:

- Workers and vehicles (including work compounds at New England Highway, Whittingham and Army Camp Road, Glenridding)
- Noise from machinery and equipment

Traffic will not be disrupted and vehicle access for local residents will be maintained.

We have included a map to show you the work location.

Looking ahead

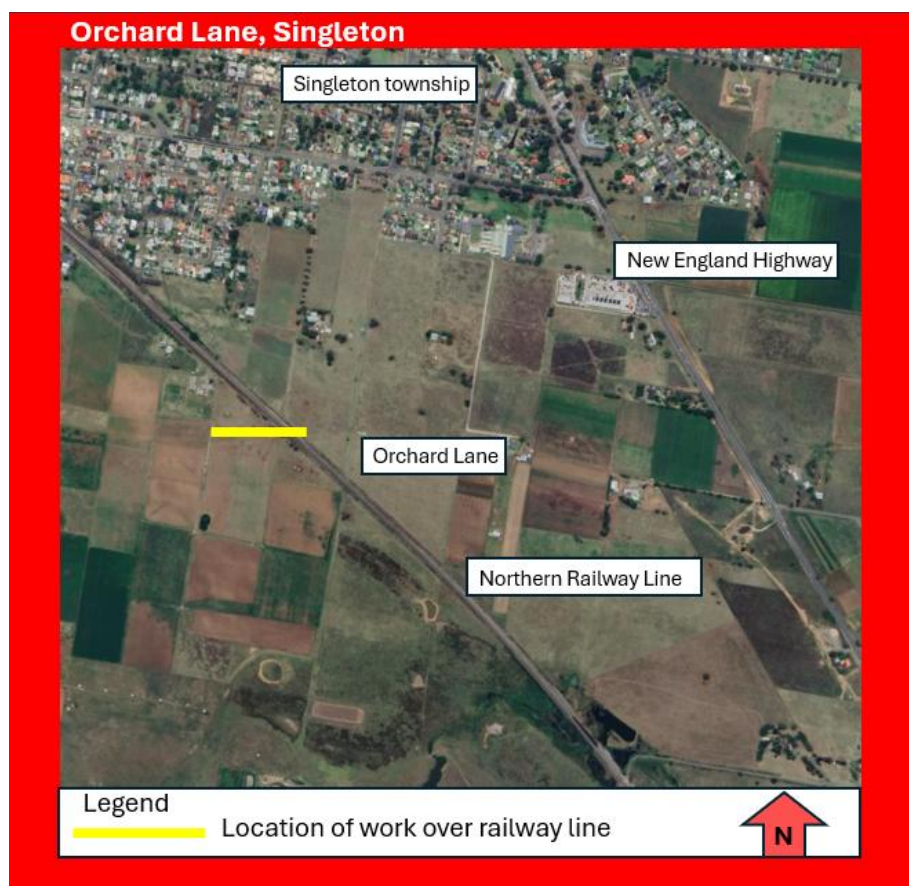
We will continue to keep the community updated as work on the project progresses. The bypass is expected to open to traffic in late 2026, weather permitting.

Complaints or queries



If you have any complaints or queries, please contact the Project Line on 1800 991 254

Location of work area



Contact us



24-hour Construction Response Line
1800 991 254



SBP-community@acciona.com



nswroads.work/singleton



Singleton Bypass Project
PO Box 408 Singleton, NSW 2330



For the latest traffic updates:
Call 132 701, visit livetraffic.com or
download the app Live Traffic NSW



Interpreter service

For languages other than English call 131 450
Arabic • Greek • Hindi • Mandarin • Vietnamese

لطلب خدمة الترجمة الشفهية للغات غير الإنجليزية اتصل
بالرقم **131 450**

Για υπηρεσίες διερμηνείας σε άλλες γλώσσες εκτός από
τα Αγγλικά καλέστε το **131 450**

अंग्रेजी के अतिरिक्त अन्य भाषाओं के लिए दुभाषिया सेवा
131 450 पर कॉल करें

获取英语以外的其他语言口译协助服务可以致电**131 450**

Để có dịch vụ thông ngôn cho các ngôn ngữ khác tiếng
Anh, gọi số **131 450**