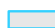







Beaches Link and Gore Hill Freeway Connection

Artarmon temporary construction support sites

This fact sheet outlines the proposed construction and operational impacts in your local area, as outlined in the EIS. We encourage you to visit our interactive portal for more information, our interactive map, videos and to view the full EIS chapters.



- | | |
|---|---|
|  Construction footprint |  Surface Work |
|  Temporary construction support site |  Cut and cover |
|  Tunnel (underground) | |
|  Construction site buildings | |

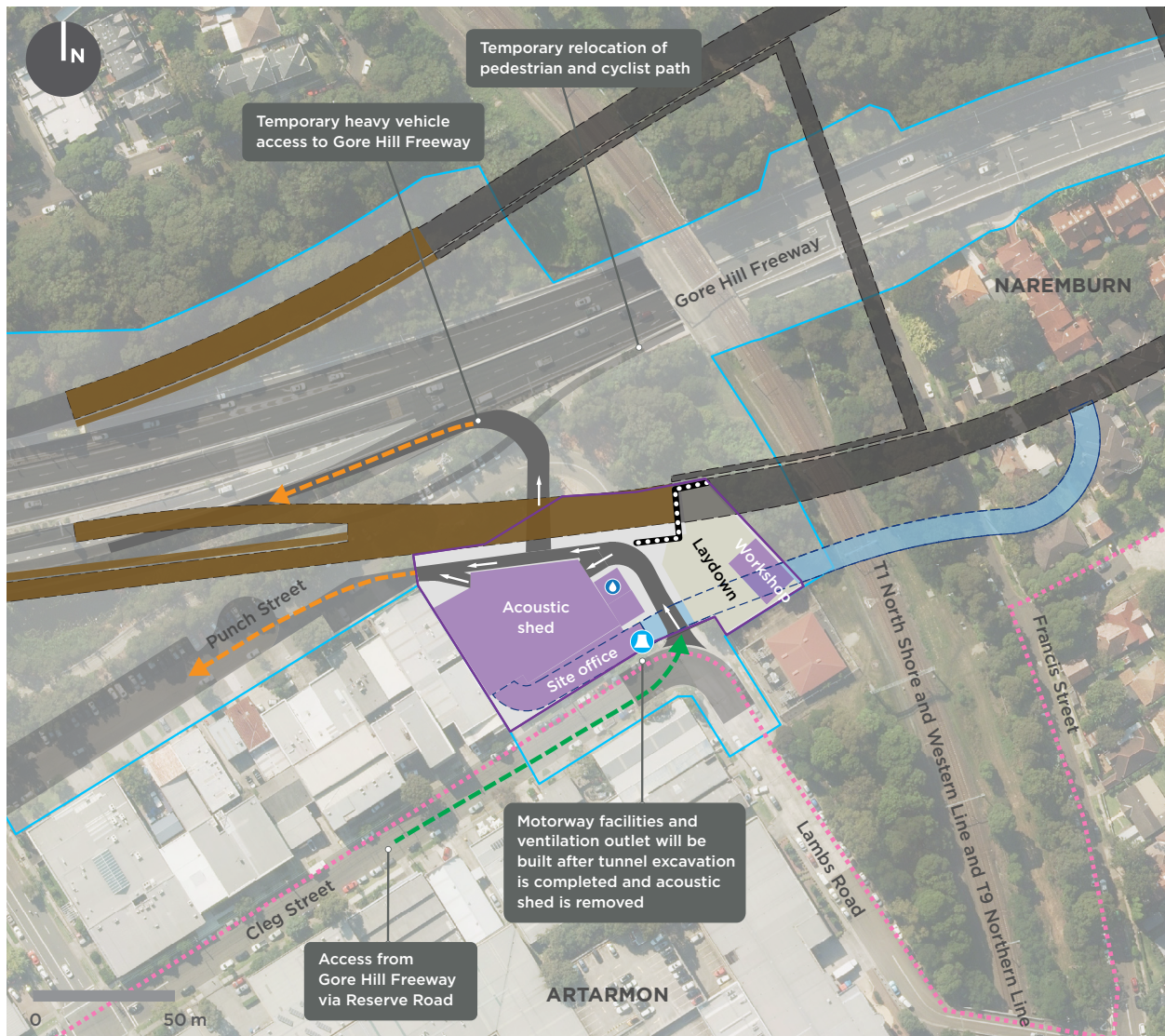
Punch Street

We will be setting up a temporary construction support site at Punch Street within the Artarmon industrial area. We will use this site to support the excavation and fitout of the tunnels east towards Northbridge, the construction of the Beaches Link cut and cover and trough structures and the permanent motorway facilities for Beaches Link.

Our key activities include:

- removing existing structures
- utility work
- building and operating temporary site facilities, including an acoustic shed, temporary noise barrier, wastewater treatment facility, air intake, and staff offices and amenities
- excavating the tunnel access
- tunnelling, including the ramp tunnels towards Northbridge
- treatment of wastewater from tunnelling activities
- storing, handling and transporting materials, including tunnel spoil
- tunnel fitout and finishing work
- building the permanent motorway facilities
- testing and commissioning of the tunnel
- rehabilitating the site.

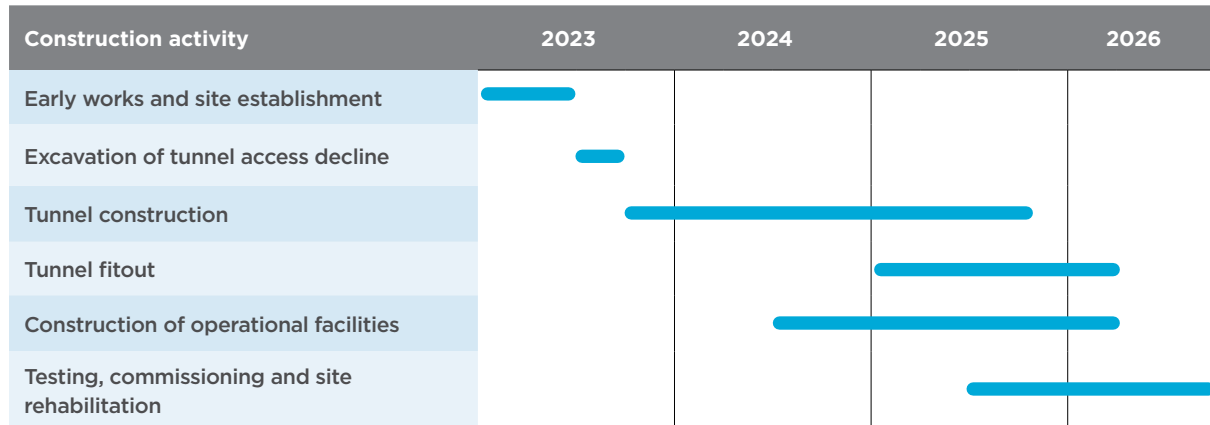
Punch Street temporary construction support site



Legend

| | | | |
|-------------------------------------|-------------------------------------|-----------------------|---|
| Construction footprint | Surface Work | Temporary site access | Wastewater treatment plant |
| Temporary construction support site | Cut and cover and trough structures | Site access - in | Indicative temporary noise barrier |
| Tunnel (underground) | Access decline (underground) | Site access - out | Temporary pedestrian and cyclist path diversion |
| Construction site buildings | Ventilation tunnel | Ventilation outlet | |

Punch Street temporary construction support site indicative construction program



Duration



You may see us in this area for up to four years as we setup, carry out our construction work, then demobilise the site and rehabilitate it for future use. We will be building permanent infrastructure to support the operation of Beaches Link at Gore Hill Freeway, including motorway facilities and a ventilation outlet.

The construction peak at this site will be when we are tunnelling and will be up to two years.

Hours of work



We will be tunnelling up to 24 hours a day, seven days a week. Once we are tunnelling, the majority of the work will take place underground and activity on the surface will reduce. Based on our planned tunnelling rate and depth we expect the impact from tunnelling to be minimal for residents as we will only be excavating directly under each property for about one week, and will generally be quite deep.

When tunnelling, our work will be as deep as about 42 metres (13 storeys) at Artarmon.

The majority of the tunnelling work on the surface at this site takes place inside the acoustic shed, which manages the potential impacts of noise, dust and light spill. These sheds are closed at night to further reduce noise. There may be occasional deliveries and some light vehicle movements outside of standard construction hours.

General site activities and spoil transport will only take place during standard construction hours. For any work outside the standard construction hours, the community will be notified in advance.

Traffic/vehicle movements



Access into the site will be via Cleg Street and out of the site via Punch Street.

An alternative heavy vehicle exit will be constructed to connect directly to the Gore Hill Freeway heading west to reduce heavy vehicles on local streets.

At our construction peak, there will be around 370 heavy vehicle movements and 580 light vehicle movements per day (a vehicle travelling in and out of the site is counted as two movements). The combined activity for all Artarmon temporary sites will increase traffic in the area by 7.5 per cent during peak construction. Overall, this is a small increase to current traffic volumes.

Dickson Avenue

We will be setting up a temporary construction support site at Dickson Avenue within the Artarmon industrial area to support construction of Beaches Link and Gore Hill Freeway Connection.

Our key activities include:

- setting up the site by removing existing structures
- building and operating temporary site facilities, including laydown areas, staff offices and amenities and car parking.

For the Beaches Link construction work:

- the site will be used to support tunnelling activities at the Punch Street construction site and construction of operational facilities.

For the Gore Hill Freeway Connection construction work:

- the site will be used for equipment laydown, car parking for construction workers and temporary site office buildings to support surface work
- once most of the surface and tunnelling work has been completed, the site will be rearranged to build the off ramp structures, surface work onto Reserve Road, the motorway control centre and the tunnel support facility.

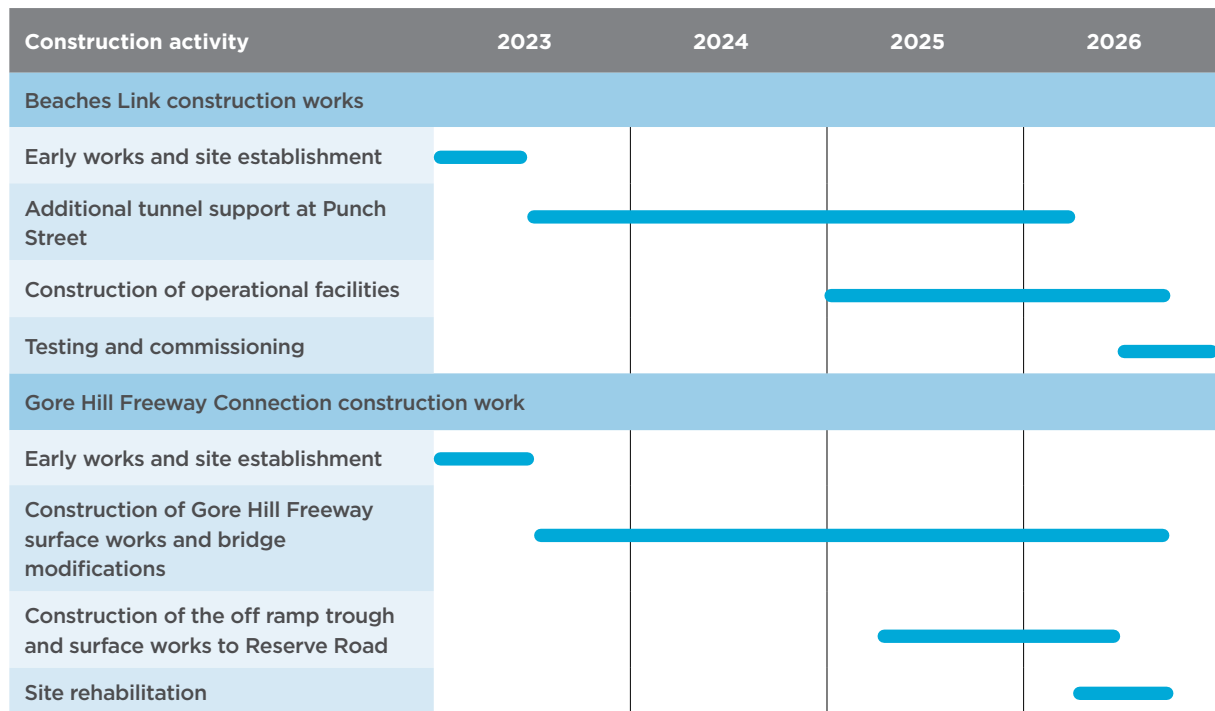
Dickson Avenue temporary construction support site



Legend

| | | | |
|-------------------------------------|-----------------------|---|--------------------|
| Construction footprint | Surface Work | Beaches Link construction support site area | Surface connection |
| Temporary construction support site | Cut and cover | Gore Hill Freeway Connection construction support site area | Site access - in |
| Tunnel (underground) | Car park | | Site access - out |
| Construction site buildings | Temporary site access | | |

Dickson Avenue temporary construction support site indicative construction program



Duration



You may see us in this area for about four years as we setup, carry out our construction work, then demobilise the site and rehabilitate it for future use. We will be building permanent infrastructure to support the operation of Beaches Link at the Gore Hill Freeway, including motorway facilities and a ventilation outlet.

The construction peak at this site will be when we are tunnelling and carrying out Gore Hill Freeway surface works and will be up to three years in duration.

Hours of work



Our general site activities including most surface work and building the motorway control centre and tunnel support facilities will be carried out during standard construction hours.

There will be some activities, such as complex surface work and utility adjustments which occur outside of standard construction hours due to site access restrictions, traffic staging and safety requirements.

For any work outside the standard construction hours, the community will be notified in advance.

Traffic/vehicle movements



Access to site will be via Dickson Avenue.

At our construction peak, there will be around 90 heavy vehicle movements and 500 light vehicle movements per day (a vehicle travelling in and out of the site is counted as two movements). The combined activity for all Artarmon temporary sites will increase traffic in the area by 7.5 per cent during peak construction. Overall, this is a small increase to current traffic volumes.

Artarmon

Barton Road

We will be setting up a temporary construction support site on Barton Road to support construction of the Gore Hill Freeway Connection.

Our key site features include:

- equipment laydown facilities
- car parking for construction workers
- temporary site office buildings.

Barton Road temporary construction support site



Legend

- Construction footprint
- Temporary construction support site

- Surface Work
- Construction site buildings

- Site access - in
- Site access - out

- Temporary site access
- Carpark

Barton Road temporary construction support site indicative construction program

| Construction activity | 2023 | 2024 | 2025 | 2026 | 2027 |
|--|------|------|------|------|------|
| Early work and site establishment | ■ | | | | |
| Construction support for surface works | | ■ | | | |
| Site restoration and demobilisation | | | | | ■ |

Duration



You may see us in this area for up to four years as we setup, carry out our construction work, then demobilise the site and rehabilitate it for future use. The construction peak at this site will be when we are carrying out surface work and will be up to three years.

Hours of work



Our general site activities including most surface work will be carried out during standard construction hours. There will be some activities, such as complex and constrained surface work and utility adjustments, which occur outside of standard construction hours due to site access restrictions and traffic staging requirements. For any work outside the standard construction hours, the community will be notified in advance.

Traffic/vehicle movements



Access to site will be via Reserve Road. At our construction peak, there will be around 35 heavy vehicle movements and around 120 light vehicle movements per day (a vehicle travelling in and out of the site is counted as two movements). The combined activity for all Artarmon temporary sites will increase traffic in the area by 7.5 per cent during peak construction. Overall, this is a small increase to current traffic volumes.



Artist's impression of Gore Hill Freeway Connection. Indicative only.

Artarmon

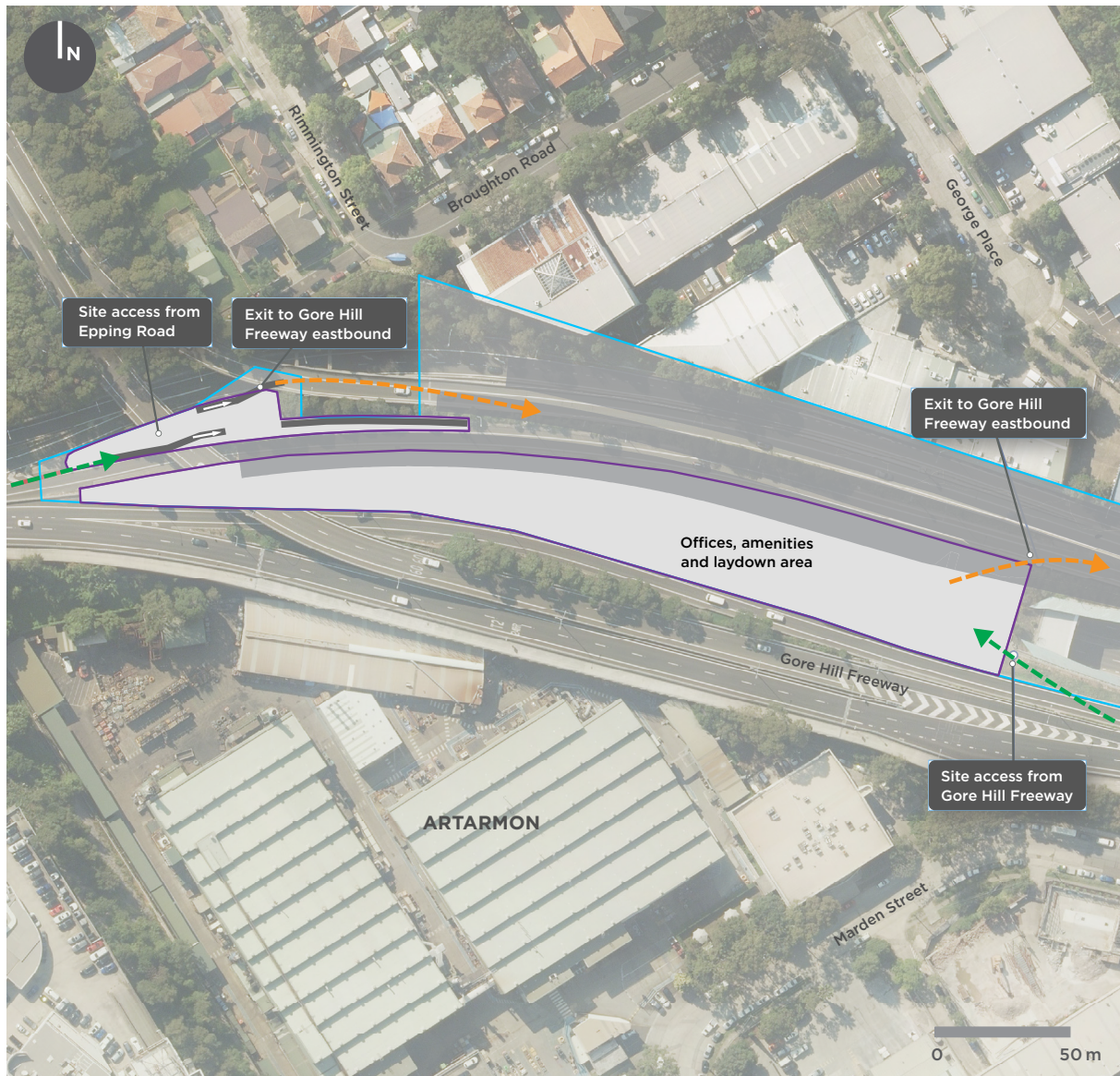
Gore Hill Freeway median

We will be setting up a temporary construction support site on the median above the Lane Cove Tunnel, within the Gore Hill Freeway to support construction of the Gore Hill Freeway Connection.

Our key site features include:

- equipment laydown facilities.

Gore Hill Freeway median temporary construction support site



Legend

- Construction footprint
- Temporary construction support site

- Surface Work
- Temporary site access

- Site access - in
- Site access - out

Gore Hill Freeway median temporary construction support site indicative construction program

| Construction activity | 2023 | 2024 | 2025 | 2026 | 2027 |
|---------------------------------------|------|------|------|------|------|
| Early works and site establishment | | | | | |
| Construction support for surface work | | | | | |
| Site restoration and demobilisation | | | | | |

Duration



You may see us in this area for up to four years as we setup, carry out our construction work, then demobilise the site and rehabilitate it for future use. The construction peak at this site will be when we are carrying out surface work and will be up to three years.

Hours of work



Our general site activities will be carried out during standard construction hours.

There may be occasional activities, such as complex surface work, utility adjustments, and oversized deliveries which occur outside of standard construction hours due to site access restrictions, traffic staging and safety requirements.

For any work outside the standard construction hours, the community will be notified in advance.

Traffic/vehicle movements



Access into the site will mainly be via the Gore Hill Freeway. A secondary access will be provided via Epping Road. Access out of the site will be via the Gore Hill Freeway (eastbound).

At our construction peak, there will be around 10 heavy vehicle movements and 100 light vehicle movements per day (a vehicle travelling in and out of the site is counted as two movements). The combined activity for all Artarmon temporary sites will increase traffic in the area by 7.5 per cent during peak construction. Overall, this is a small increase to current traffic volumes.

Contact us



nswroads.work/blportal



[1800 931 189](tel:1800931189)



whtbl@transport.nsw.gov.au



Customer feedback
Transport for NSW, Locked Bag 928
North Sydney NSW 2059

Visit our interactive web portal
Read the EIS, find out more or ask our
team a question.



nswroads.work/blportal

Our phone line is monitored 24 hours
when work is taking place.



Translating and Interpreting Service

If you need an interpreter, please call the Translating and Interpreting Service (TIS National) on **131 450** and ask them to telephone Transport for NSW on **1800 931 189**.

Chinese (simplified)

若您需要口译员，请拨打 **131 450** 致电翻译与口译服务处 (TIS National)，并要求他们转拨 **1800 931 189** 致电 Transport for NSW。

Italian

Se avete bisogno di un interprete, chiamate il servizio traduttori e interpreti (TIS National) al numero **131 450** e chiedete di telefonare a Transport for NSW al numero **1800 931 189**.

Portuguese

Se necessitar de um(a) Intérprete, por favor, ligue para o Serviço de Tradução e Interpretação (TIS National), através de **131 450** e peça o telefone do Transport for NSW, através de **1800 931 189**.

Privacy Transport for NSW is collecting your personal information in connection with Beaches Link and Gore Hill Freeway Connection ("the Project"). In addition to collecting your name and contact details we may collect other information such as your submissions and other communications with us. We will retain and use this information for consultation purposes, including communications and analysis in connection with the Project. We will not disclose your personal information to third parties unless authorised by law and if we include your submissions in any public report we will not identify you. Providing your personal information is voluntary but if you do not provide it we may not include you on our stakeholder database and you might miss further consultation opportunities. Your personal information will be held by us and you can contact us to access or correct it. Please write to us at either whtbl@transport.nsw.gov.au or Transport for NSW, Locked Bag 928, North Sydney NSW 2059.