

Fact sheet – TBM receival chambers, Waverton

Western Harbour Tunnel
February 2026



We acknowledge the Traditional Custodians of the Country on which Western Harbour Tunnel is being constructed, including the Gadigal, Cammeraygal, and Wangal peoples, as well as the Aboriginal peoples of Emu Plains, and we pay respect to Elders past and present.

This fact sheet provides information about the underground receival chambers for our Western Harbour Tunnel (WHT) tunnel boring machines (TBMs).

The section of tunnel from Cammeray to Waverton is being excavated using roadheaders. The section of tunnel from Birchgrove to Waverton is being excavated by TBMs, the largest in the Southern Hemisphere.

Once TBM excavation is completed, the TBMs will be decommissioned and disassembled. Two receival chambers are being excavated using roadheaders, to support the disassembly and decommissioning of the TBMs.

The TBMs' cutterheads and shields (main drives), can't be retrieved and will remain in the receival chambers, under Waverton. The remaining parts will be disassembled and transported by truck out of the tunnel from Waverton and reused or recycled where possible.

TBM receival chamber – Waverton

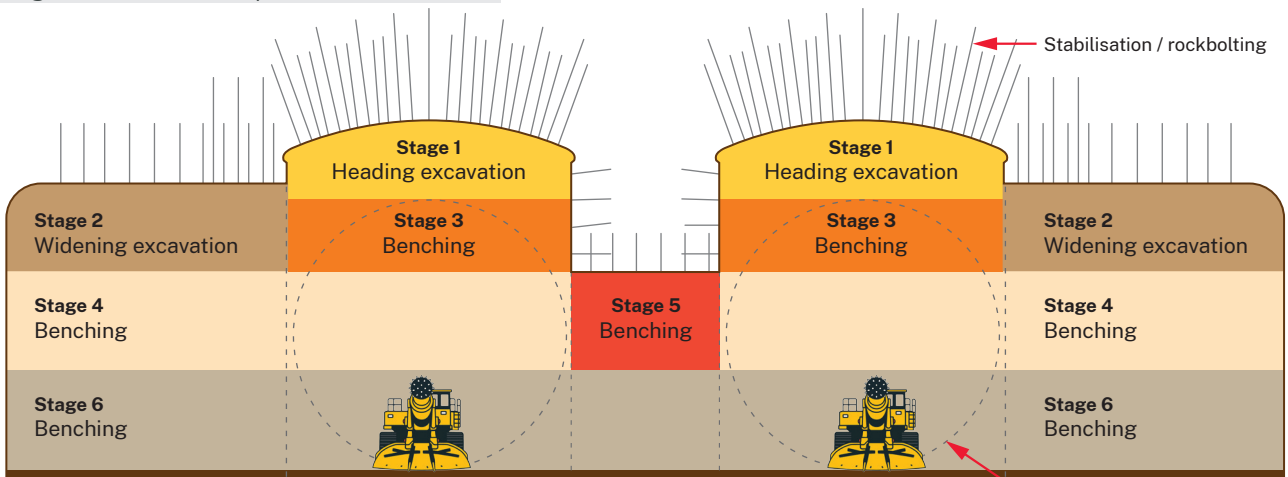
Each receival chamber comprises a widened section of the mainline tunnel plus an excavated side chamber, which is large enough for the TBMs' cutterheads and shields to remain. The chambers will be 23m high, 18m wide and 21m long, the widened section at the side of each receival chamber will be 19m high, 17m wide and 18m long.

How do we construct the receival chambers?

The receival chambers will be excavated by roadheaders in stages (one level at a time). Excavation will start from the top of the mainline tunnel and progress deeper and wider underground, to accommodate the size of the TBMs' cutterheads and shields.

The diagram below shows the excavation process.

Heading excavation – the top of the tunnel.

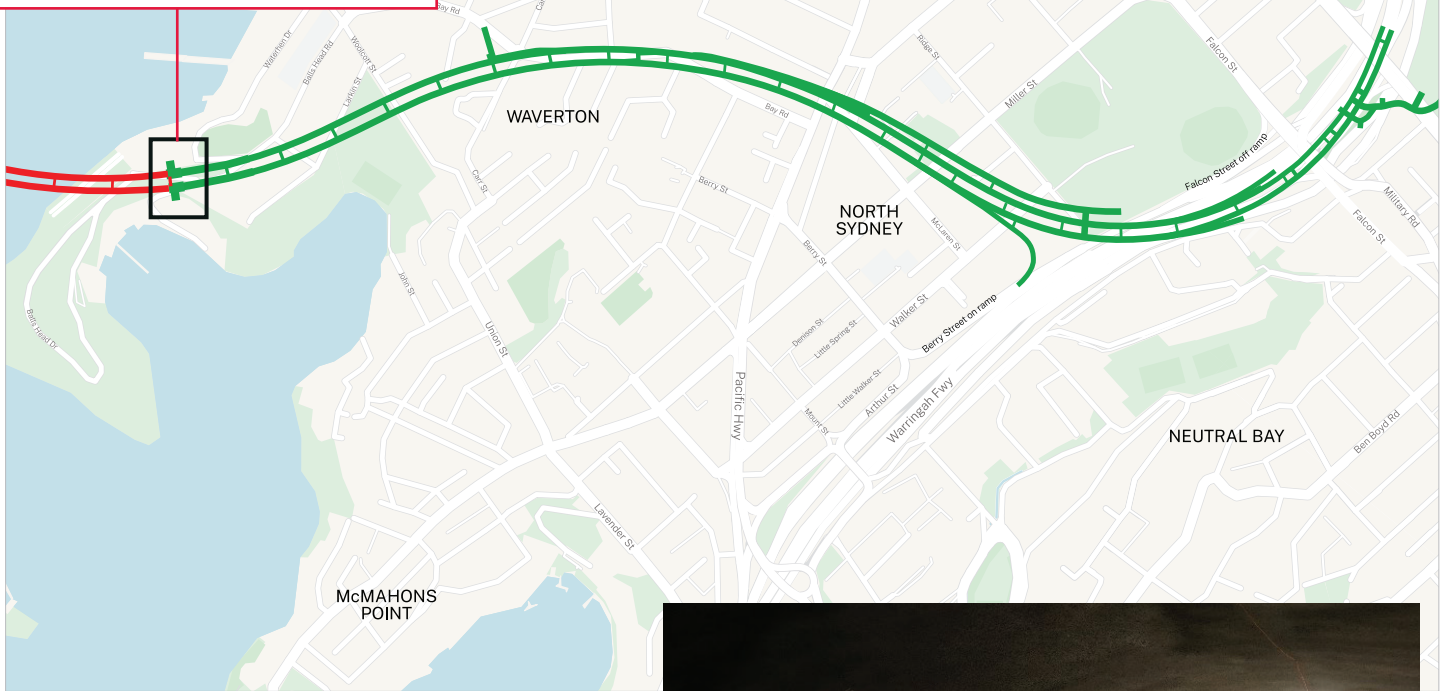


Benching excavation – the floor of the tunnel.

Indicative size of the TBM cutterhead

Where are the receive chambers located?

The receive chambers are located under Balls Head Road in Waverton, where TBM tunnelling meets roadheader tunnelling.



How long will it take?

We plan to start excavating the receive chambers in March 2026 and expect it will take approximately six months to complete both chambers.



Roadheader in operation during underground excavation

Contact us



Project Infoline **1800 931 189**



whtbl@transport.nsw.gov.au



Visit our website at
nswroads.work/whtportal



Western Harbour Tunnel
PO Box 537, North Sydney,
New South Wales 2059, Australia



Interpreter service

For languages other than English call **131 450**
Mandarin • Cantonese • Spanish • Japanese

获取英语以外的其他语言口译协助服务可以致电**131 450**

獲取英語以外的其他語言傳譯協助服務可以致電**131 450**

Servicio de intérpretes para personas cuyo idioma no es el inglés, por favor, llame al número **131 450**

英語以外の言語の通訳サービスは**131 450**までお電話ください。

www.transport.nsw.gov.au/privacy-statement#Your_Privacy