

New England Highway – Singleton Bypass

Project update – Major work underway

September 2024



Artist impression of the Putty Road Interchange looking north. Indicative only.

The Australian and NSW Governments are investing a total of \$700 million to build the Singleton Bypass. The bypass will improve travel times, freight efficiency and safety for local and interstate motorists. Acciona Construction Australia has started building the eight kilometre project.

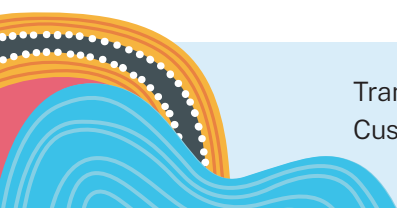
Key project features

The Singleton Bypass includes eight kilometres of new highway designed for a posted speed limit of 100km/h, with a single lane in each direction. To accommodate traffic demand into the future and provide connectivity to the Singleton town centre, the design includes a full interchange at Putty Road, connections to the New England Highway at the southern and northern ends of the bypass and at Gowrie. We have included a copy of the design in this project update.

Other key features of the bypass include:

- six bridges including four bridges across the Hunter River and floodplain
- a northbound climbing lane between Gowrie and the northern connection
- noise walls located along sections of the bypass to reduce traffic noise
- landscaping to provide screening and reduce visual impact
- spill containment basins located on both sides of the Hunter River to mitigate potential environmental impact
- a fauna rope crossing at the northern connection to allow safe passage of local wildlife.

You can find out more detail about the key features of the bypass by visiting our interactive portal nswroads.work/singleton

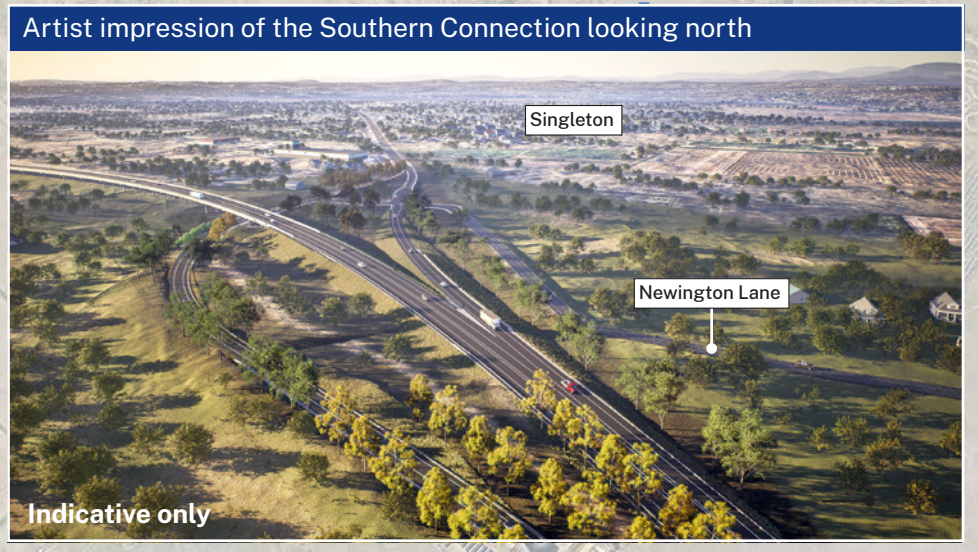
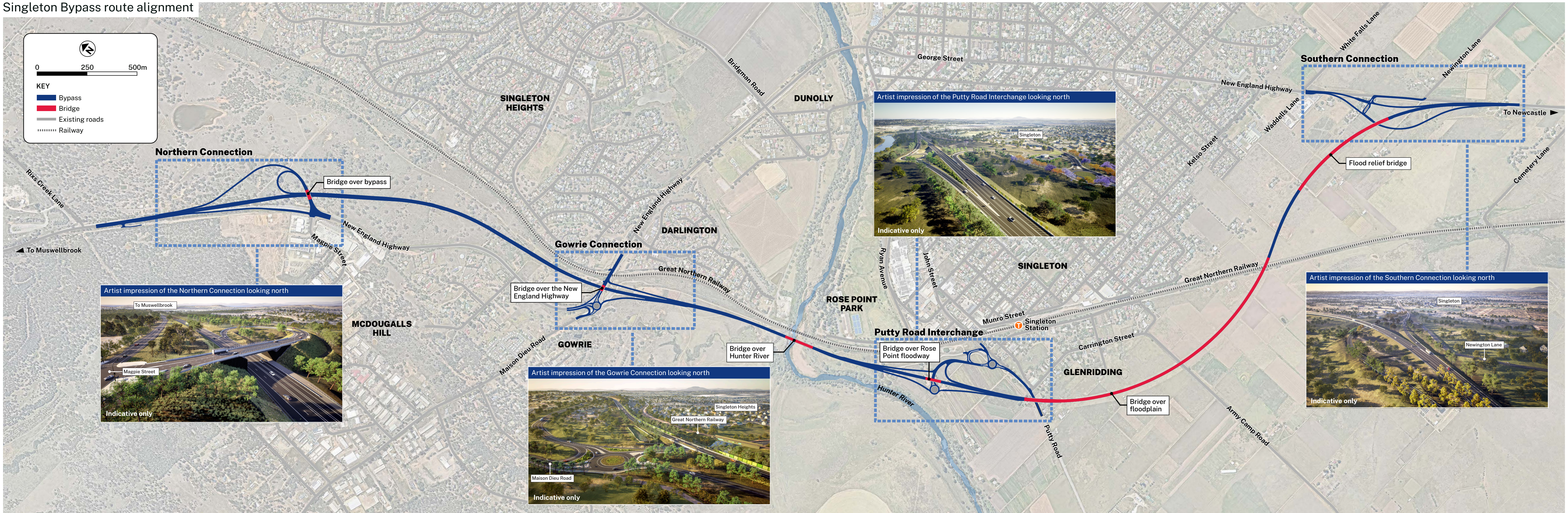


Singleton Bypass route alignment

0 250 500m

KEY

- Bypass
- Bridge
- Existing roads
- Railway



Design changes

Following community and stakeholder feedback and further consultation with property owners as well as additional investigation and survey work, some changes have been made to the project, including:

- simplifying the road layout at the southern connection
- revising the location of the Putty Road roundabout and northbound and southbound entry and exit ramps
- adjusting the northbound exit ramp and roundabout at Gowrie
- building a detention basin at the Gowrie connection to manage stormwater run-off
- adjusting the size of the southbound entry and exit loop ramp at the northern connection, to improve road safety when travelling from Rixs Creek Lane.

Addendum Review of Environmental Factors

An Addendum Review of Environmental Factors (AREF August 2024) has been prepared to determine the potential environmental and social impact and proposed mitigation measures for the final design of the Singleton Bypass.

The AREF is available to view online at nswroads.work/singleton

The AREF addresses how the work will be managed including the proposed methods used to minimise the impact on:

- the local community through traffic, access, noise and vibration
- flora and fauna
- soil, water and air quality
- socio-economic
- flooding
- Aboriginal heritage.

Visit our interactive portal at nswroads.work/singleton. Our portal features an interactive map showing the final project design and the Addendum Review of Environmental Factors.

We will soon be launching our online interactive construction portal. Our construction portal will feature before and after images, animation videos, work activity and more. We will regularly update the portal during construction of the bypass.



Clearing at the Northern Connection

Three month lookahead

Our main work activities over the next three months include:

- finalising new fencing along the project corridor, where required and removing existing fencing to ensure the work area is safe
- finalising establishment of a site compound on the New England Highway at Whittingham. The compound will accommodate workers and include office spaces, amenities, car parking and storage facilities
- installing erosion and sediment controls to protect the Hunter River and surrounding areas from construction activities
- construction of haul roads to allow access for machinery needed to build the bridge over floodplain
- continuing bridge piling.



Establishing a site compound at Whittingham



Haul roads are being constructed to enable building of bridge over the floodplain

Our work hours

Standard working hours for the project include the following:

Monday to Friday: **7am to 6pm**

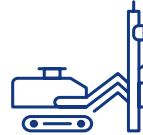
Saturday: **8am to 1pm**

Sundays and public holidays: **No work**

Some work will need to be done outside of standard construction hours to reduce impacts on the road network and ensure the safety of motorists and our workforce. We will provide advance notice to all stakeholders who will be directly impacted by this work.



We will provide notice to stakeholders when work needs to be done outside of construction hours



Bridge piling work has begun across the project

Bridge construction underway

This month, the project team will be starting bridge piling work, the first step in building the bridges across the project.



Earthworks for access tracks near the Hunter River

Traffic changes

During construction there will be temporary lane closures and reduced speed limits on the New England Highway and surrounding roads.

The speed limit on the **New England Highway between Cemetery Lane and Kelso Street** has been reduced from **80km/h to 60km/h** for the duration of the project. This will ensure the safety of workers and motorists while construction work is carried out close to the highway and vehicles are accessing the nearby site compound.

Work on the project will increase heavy and light vehicle movements each day. We will continue to work with Singleton Council to safely manage this increase and ensure the safety of motorists and pedestrians.

Please keep to sign posted speed limits and follow the direction of traffic controllers.



Machinery arriving on site at Whittingham

Employment opportunities

If you are interested in work opportunities, please visit our project portal (QR code).



Earthworks on McDougalls Hill

Contact us



Project information and 24-hr construction response line **1800 991 254**



SBP-community@acciona.com



nswroads.work/singleton



Singleton Bypass Project
PO Box 408 Singleton NSW 2330



For the latest traffic updates:
Call 132 701, visit live.traffic.com or download the app Live Traffic NSW



Interpreter service

For languages other than English call **131 450**
Arabic • Greek • Hindi • Mandarin • Vietnamese

طلب خدمة الترجمة الشفهية للغات غير الإنجليزية اتصل
بالرقم **131 450**

Για υπηρεσίες διερμηνείας σε άλλες γλώσσες εκτός από
τα Αγγλικά καλέστε το **131 450**

अंग्रेज़ी के अतिरिक्त अन्य भाषाओं के लिए दुभाषिया सेवा
131 450 पर कॉल करें

获取英语以外的其他语言口译协助服务可以致电**131 450**

Để có dịch vụ thông ngôn cho các ngôn ngữ khác
tiếng Anh, gọi số **131 450**