

Community update

February 2024

Powerhouse Parramatta | February

Powerhouse Parramatta is the largest investment in cultural infrastructure since the Sydney Opera House, and the first major NSW cultural institution to be established in Western Sydney. Lendlease is responsible for the detailed design and construction of Powerhouse Parramatta.

Welcome to the February construction update.

Issued every two months, these updates keep you informed of progress onsite and showcase key milestones.

Latest updates

Progress continues at the Powerhouse Parramatta construction site:

- 5 black truss beams have been installed on Building A (western building)
- Core 2 of Building B (eastern building) is now complete, with the jump form dismantled end of 2023
- First escalator installed in Building A
- Precast concrete panels installation continues.

Key construction activities



Steel works

Structural and secondary steel works continues to progress.

Large pieces of structural steel continue to be delivered outside of standard construction hours due to the oversized nature of the steel. Delivery has been streamlined with the completion of the internal driveway and assembly zone within the project site, located alongside Building A (western building) and continuing along the foreshore.

5 truss pieces have been installed in Building A – and you may notice that they look different to their counterparts on Building B (eastern building).

Did you know? The black colouring of these truss pieces serves a purpose! This exhibition space will be a highly flexible and adaptable space that is light-isolated to support a range of exhibitions and programs. It will have the highest standards in environmental control with the ability to present sensitive objects and installations. So, to stop as much light as possible entering the space, the trusses in this section are black, unlike the rest which are white.

[Explore the features of Powerhouse Parramatta here.](#)

Image: Foreshore assembly area and internal driveway; credit: Images for Business

First escalator install in Building A

The first escalators have been successfully installed in Building A (western building).

While not visible for onlookers right now, these internal escalators and elevators will provide access between floors, as well as improve natural light and views at every level.

Right image: Escalator installation on Building A; credit: Lendlease

Structure works

Despite the challenges with the heat and the wind, Core 2 is complete and dismantle works were completed end of 2023. This included the removal of cladding, external hanging decks, external handing stairs, the grid matrix and external shutters.

Facade

Panel production for GRC (glass-reinforced concrete) and Curtain Wall are well underway, with 288 GRC panels for Building B's (eastern building) East and South elevations ready to be installed.

Fun fact: there will be a total of 1,200 GRC panels installed across both buildings by completion.

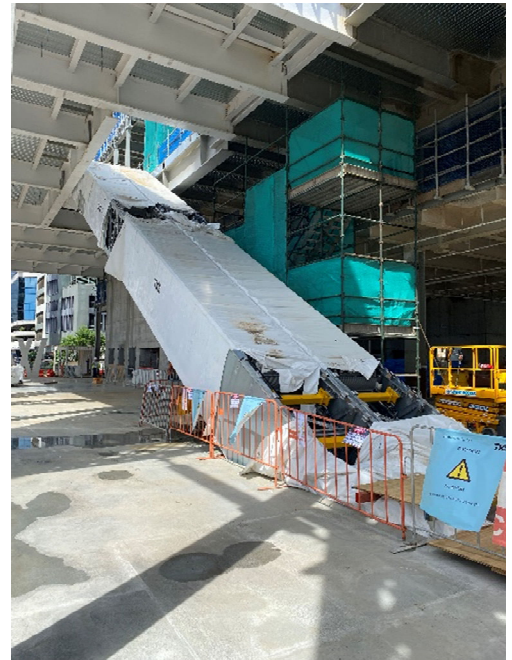
In addition, 9 containers of Curtain Wall up to Level 2 of Building B will be installed over the next coming months. A Curtain Wall is the outer covering of a building – and unlike the exoskeleton, the curtain wall is non-structural but is attached to the building structure and used to protect the building from the elements.

Other work in progress

- Services work, including electrical and stormwater, continues within the construction site to service the new buildings once in operation.
- Precast concrete panels installation on Building A and B.

Upcoming construction activities: February-March

- Electrical services identification work in Lamont Street
- Structural and secondary steel deliveries and installation
- Core 3 Jump form completion and dismantle
- Progress on structural works associated with Cores 1, 2 and 3
- Precast panel installations to Building A and B
- Concrete slab installation on Building A and B
- Internal wall works in Building A and B.



News and events

ING Australia and Powerhouse Parramatta community and wellbeing partnership

Powerhouse has announced a significant \$4 million investment in the future of Powerhouse Parramatta by ING Australia. This remarkable partnership will establish ING as the museum's Community and Wellbeing Partner, supporting Western Sydney communities through the formation of the ING Pavilion and the ING Community Wellbeing Program.

[Watch the news story](#) and [learn more about the partnership](#)

Yibirmarra Foundation Bush Christmas 2023

At the end of last year, Powerhouse Parramatta partnered with the Yibirmarra Foundation for the 2023 Bush Christmas event. Held annually in December, the Foundation collects brand new toys, clothes, and food from other charities and donors in Sydney, to be distributed across NSW to a range of first nation communities.



Collection points and regular pick-ups were coordinated with the Yibirmarra volunteers at various Lendlease offices and construction projects across Sydney, including Powerhouse Parramatta. Hundreds of donated toys, food and clothing were collected, including generous donations from subcontractors, client and stakeholder partners all of which were distributed throughout December to 8 First Nations Community partners across 7 regions in NSW.

[Learn more about the Yibirmarra Foundation](#)

Image: 2023 Bush Christmas donations; credit: Yibirmarra Foundation

End of year video

There's been an enormous amount of work on site to build the museum since main works construction started in early 2022.

[Check out this new video that demonstrates how far the project team has progressed!](#)

[And watch all our videos on the Powerhouse Parramatta INSW website](#)

A digital approach

As part of our commitment to sustainability, we have a 'digital first' communications approach. [Sign up to receive the latest project updates online](#)

More information

We are committed to keeping you informed and regular updates will be provided.

Contact us for construction related questions, feedback or complaints:

 1800 574 931  powerhouse@lendlease.com  <https://powerhouseparramatta.insw.com>

If you need an interpreter, please call TIS National on 131 450 and ask them to call Infrastructure NSW on 1800 931 109. Our business hours are 8am – 5pm.