

December 2022



**The Western Harbour Tunnel will transform the way people and goods move around our great city by creating a western bypass of the Sydney CBD and take pressure off the Sydney Harbour Bridge, Sydney Harbour Tunnel, Anzac Bridge and Western Distributor corridors.**

**Stage 2 of the Western Harbour Tunnel (WHT) includes tunnels from Cove Street in Birchgrove, across Sydney Harbour and connects to the Warringah Freeway in Cammeray and North Sydney.**

## Detailed design

Consistent with complex major infrastructure projects progressing through an environmental planning and assessment process, the design and construction approach presented in the Environmental Impact Statement (EIS) was at planning stage and indicative only.

Further refinement as part of detailed design is now underway and we are working to develop the design and construction methodologies.



## Refining the design

The EIS for the project was approved by the Minister for Planning and Public Spaces on 21 January 2021. Any refinements to the approved project during the contractor's detailed design will be reviewed for consistency with the project approval. The review would be undertaken to consider whether the refinement would:

- Result in any of the conditions of approval not being met
- Be consistent with the objectives and operation of the project as described in the environmental impact statement
- Result in a significant change to the approved project
- Result in any potential environmental or social impacts of a greater scale or impact than that considered by the environmental impact statement.

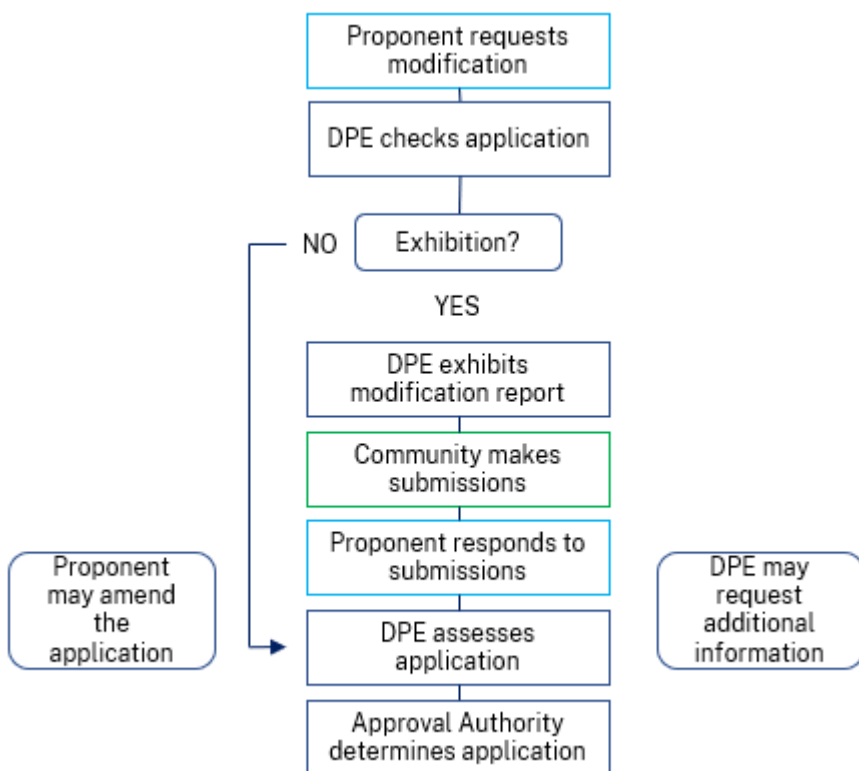
Where design refinements do not meet these criteria, a modification would be sought from the Minister for Planning in line with the Environmental Planning and Assessment Act 1979.

## Modification process

We will need to carry out the modification to the existing project approval for the project. This will include a modification report that is prepared by the contractor. Often, modifications are beneficial to a project, as the contractor can provide better community and environmental outcomes as they determine the detailed design.

Occasionally, a project may need to carry out multiple modification reports based on changes identified in the procurement and detailed design phase.


The modification process involves community consultation and the opportunity to provide feedback to the Department of Planning and Environment (DPE). This is a separate process to Transport for NSW (Transport).





For more information on the modification process, visit the DPE [State Significant Development Modifications](#) website

### Contact us

If you have any questions or would like more information please contact our project team:

 1800 931 189

 [whtbl@transport.nsw.gov.au](mailto:whtbl@transport.nsw.gov.au)

 [nswroads.work/wht-stage2](http://nswroads.work/wht-stage2)



### Translating and interpreting service

If you need help understanding this information, please contact the Translating and Interpreting Service on 131 450 and ask them to call us on 1800 931 189.



Scan the QR code to subscribe for email updates about the project

or go to [nswroads.work/whtportal-subscribe](http://nswroads.work/whtportal-subscribe)